


LED Low Profile Flushmount

NEED HELP?
Call or Email us first

Our service team is ready to answer your questions...
1-800-265-1833 (English) / 1-800-567-2513 (French)
IN CANADA - ressaescanada@canarmna.ca - IN USA - ressaesusa@canarmna.ca

Monday – Friday
8 AM - 5 PM EST.



INSTRUCTIONS PERTAINING TO RISK OF FIRE OR INJURY TO PERSONS READ ALL INSTRUCTIONS
IMPORTANT SAFETY INSTRUCTIONS
SAVE THESE INSTRUCTIONS

TOOLS AND MATERIALS REQUIRED:



Wiring supplies as required by local electrical code

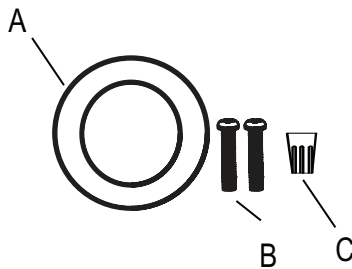


SAFETY PRECAUTIONS:

1. TURN OFF ELECTRICAL POWER BEFORE STARTING INSTALLATION OF LIGHT FIXTURE.
2. THIS PRODUCT MUST BE INSTALLED IN ACCORDANCE WITH THE APPLICABLE INSTALLATION CODE BY A CERTIFIED ELECTRICIAN FAMILIAR WITH LOCAL MUNICIPAL CODES AND REQUIREMENTS.
3. CAUTION – RISK OF FIRE. CONSULT A QUALIFIED ELECTRICIAN TO ENSURE CORRECT BRANCH CIRCUIT CONDUCTOR.

PACKAGE CONTENTS

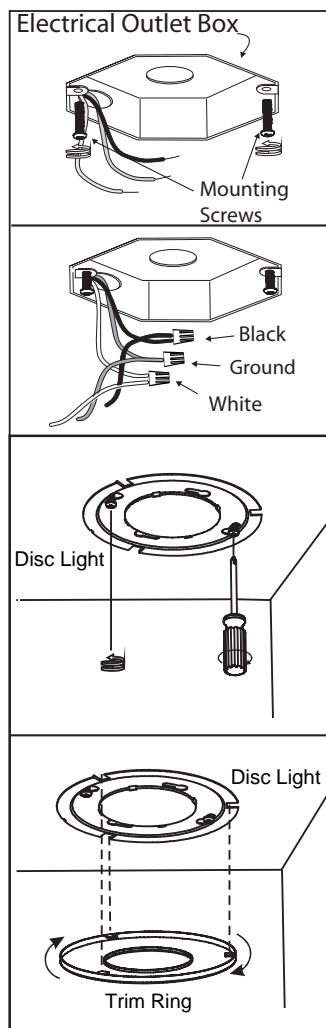
PART	DESCRIPTION	QTY
A	LED light	1
B	Mounting screws	2
C	Wire nut	3



FLUSH MOUNT

This LED light is compatible to be dimmed by LUTRON #DVCL-153P, MACL-153M, TGCL-153P, LEVITON #6631, 6633, 6633-P, 6672, 6674, IPL06. Dimming levels may vary by different dimmer
Max # of Lamps per 600W Dimmer: 6 pcs

WARNING: Wet-rated lighting fixtures are used in places with direct exposure to water. These locations include almost all outdoor lights, including landscape lighting such as path lights and ground wells. Fixtures rated for wet locations use waterproof seals to protect their internal components from moisture. This does not cover the section where the light is mounted to the junction box. If water is entering through the junction box, it will enter the light fixture, and that is classified as an electrical hazard by most municipal and fire departments.



1. Prior to installation, install mounting screws into the junction box. Do not drive screws completely to the end of the junction box.

2. Connect supply wires to wires on fixture with wire nuts. Connect white to white, black to black, and ground wire to ground wire as grounding connection.

3. Remove Trim Ring from Light Disc by turning counter clockwise, align Light Disc mounting holes with junction box screws, turn Light Disc clockwise as shown and tighten screws.

4. Align Trim Ring with Disc Light and twist clockwise to complete installation.