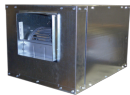


IDB07 / IDBX07

Max RPM: 3600 Max HP: 3/4 Shaft size: 3/4"



CFM	1/4" SP				1/2" SP				3/4" SP				1" SP				1-1/2" SP				2" SP			
	RPM	Sone	HP	FEI	RPM	Sone	HP	FEI	RPM	Sone	HP	FEI	RPM	Sone	HP	FEI	RPM	Sone	HP	FEI	RPM	Sone	HP	FEI
100	696	2.4	0.01	0.48	957	6.4	0.03	1.59	1157	9.4	0.04	1.67	1326	11	0.06	1.56	1609	15.3	0.11	1.31	1849	21.3	0.16	1.19
200	721	3	0.02	1.60	1008	8.6	0.04	1.69	1219	10.9	0.07	1.48	1392	12.6	0.1	1.35	1677	18.1	0.16	1.21	1915	25.1	0.22	1.14
300	718	2.9	0.03	1.75	1020	9.1	0.06	1.59	1247	11.5	0.09	1.47	1431	13.5	0.13	1.31	1731	20.7	0.21	1.16	1979	29.3	0.29	1.08
400	735	3.3	0.04	1.79	1015	8.9	0.07	1.66	1248	11.6	0.11	1.47	1443	13.8	0.15	1.36	1760	22.2	0.24	1.20	2017	32	0.35	1.07
500	769	4.2	0.05	1.82	1026	9.3	0.09	1.59	1243	11.4	0.13	1.47	1438	13.7	0.18	1.34	1767	22.7	0.28	1.20	2037	33.6	0.39	1.11
600	822	5.5	0.07	1.68	1049	10.1	0.12	1.47	1255	11.7	0.16	1.42	1437	13.6	0.21	1.34	1763	22.4	0.33	1.18	2040	33.9	0.45	1.10
700	897	7.8	0.1	1.49	1085	10.8	0.15	1.39	1276	12.2	0.2	1.33	1450	14	0.25	1.29	1758	22.2	0.38	1.17	2035	33.4	0.51	1.10
800	978	10.3	0.14	1.31	1133	11.6	0.18	1.34	1307	12.9	0.24	1.28	1471	14.8	0.3	1.24	1767	22.7	0.43	1.16	2030	33	0.57	1.10
900	1063	12.1	0.19	1.15	1200	12.8	0.23	1.23	1347	13.7	0.29	1.21	1501	15.9	0.36	1.17	1784	23.6	0.49	1.14	2037	33.6	0.64	1.09
1000	1149	13.3	0.25	1.03	1277	14.2	0.3	1.10	1399	14.7	0.35	1.14	1539	17.4	0.43	1.11	1807	24.9	0.57	1.10	2053	34.9	0.72	1.08
1100	1236	14.5	0.31	0.96	1358	15.7	0.37	1.02	1468	16.8	0.43	1.05	1586	19.1	0.5	1.06	1837	26.8	0.66	1.05	-	-	-	-
1200	1324	15.9	0.39	0.88	1441	17.5	0.46	0.93	1544	19.6	0.52	0.98	1645	21.7	0.58	1.02	-	-	-	-	-	-	-	-
1300	1414	17.5	0.49	0.80	1527	20.1	0.56	0.86	1624	23	0.62	0.92	1718	24.9	0.69	0.96	-	-	-	-	-	-	-	-
1400	1505	20.1	0.59	0.76	1612	23.2	0.68	0.80	1707	26.3	0.75	0.85	-	-	-	-	-	-	-	-	-	-	-	-
1500	1596	23.2	0.71	0.71	-	-	-	-	-	-	-	-	-	-	-	-	-	-	-	-	-	-	-	-



IDB09 / IDBX09

Max RPM: 2800 Max HP: 3/4 Shaft size: 3/4"

CFM	1/4" SP				1/2" SP				3/4" SP				1" SP				1-1/2" SP				2" SP			
	RPM	Sone	HP	FEI	RPM	Sone	HP	FEI	RPM	Sone	HP	FEI	RPM	Sone	HP	FEI	RPM	Sone	HP	FEI	RPM	Sone	HP	FEI
100	524	1.5	0.01	0.48	734	3.8	0.04	1.42	895	6.2	0.07	1.23	1032	8.4	0.1	1.12	1261	11.7	0.18	0.91	1455	15	0.28	0.77
200	545	2	0.02	1.59	753	4.4	0.04	1.68	913	6.7	0.08	1.35	1048	8.8	0.11	1.26	1275	12.1	0.2	1.02	1468	15.4	0.3	0.89
300	560	2.3	0.03	1.73	774	4.9	0.06	1.58	935	7.3	0.09	1.46	1069	9.3	0.13	1.31	1295	12.6	0.22	1.11	1486	16	0.32	0.99
400	564	2.3	0.03	1.96	789	5.3	0.07	1.63	953	7.8	0.11	1.45	1091	9.9	0.15	1.34	1317	13.3	0.25	1.15	1507	16.6	0.36	1.03
500	557	2.2	0.04	1.96	797	5.5	0.08	1.68	968	8.2	0.13	1.44	1107	10.3	0.18	1.32	1337	14	0.28	1.19	1529	17.3	0.4	1.07
600	557	2.2	0.05	1.95	797	5.5	0.09	1.72	976	8.5	0.15	1.44	1120	10.7	0.21	1.30	1354	14.5	0.32	1.19	1548	17.9	0.45	1.08
700	565	2.4	0.06	1.93	789	5.3	0.11	1.65	977	8.5	0.17	1.45	1127	10.9	0.23	1.33	1368	14.9	0.36	1.19	1565	18.4	0.5	1.09
800	580	2.7	0.07	1.93	786	5.2	0.12	1.70	972	8.4	0.19	1.45	1129	10.9	0.26	1.32	1378	15.2	0.41	1.17	1578	18.9	0.56	1.09
900	597	3	0.09	1.79	791	5.3	0.14	1.65	963	8.1	0.21	1.46	1125	10.8	0.28	1.36	1382	15.3	0.44	1.19	1589	19.3	0.61	1.10
1000	620	3.4	0.12	1.59	801	5.6	0.17	1.55	963	8.1	0.23	1.48	1115	10.6	0.31	1.35	1382	15.3	0.48	1.20	1595	19.5	0.66	1.11
1100	647	3.9	0.14	1.54	815	5.9	0.2	1.48	969	8.3	0.26	1.44	1111	10.5	0.34	1.35	1378	15.2	0.52	1.21	1597	19.5	0.71	1.12
1200	678	4.5	0.18	1.38	831	6.3	0.24	1.38	978	8.6	0.3	1.38	1114	10.5	0.38	1.33	1368	14.9	0.55	1.24	-	-	-	-
1300	712	5.1	0.21	1.32	850	6.8	0.28	1.31	991	9	0.35	1.31	1121	10.7	0.42	1.31	1361	14.7	0.6	1.23	-	-	-	-
1400	749	5.8	0.26	1.20	873	7.3	0.32	1.26	1006	9.3	0.39	1.28	1131	11	0.47	1.27	1362	14.7	0.65	1.22	-	-	-	-
1500	788	6.5	0.31	1.12	899	7.9	0.37	1.20	1023	9.8	0.45	1.21	1145	11.4	0.53	1.22	1367	14.9	0.71	1.21	-	-	-	-
1600	827	7.3	0.37	1.04	929	8.6	0.43	1.13	1043	10.3	0.51	1.16	1160	11.8	0.6	1.17	-	-	-	-	-	-	-	-
1700	868	8.2	0.43	0.98	960	9.3	0.5	1.06	1066	10.8	0.58	1.11	1176	12.2	0.67	1.13	-	-	-	-	-	-	-	-
1800	909	9.1	0.5	0.93	994	10.2	0.58	1.00	1091	11.3	0.66	1.06	1194	12.7	0.75	1.09	-	-	-	-	-	-	-	-
1900	951	10	0.58	0.88	1030	10.9	0.66	0.95	1120	11.9	0.74	1.02	-	-	-	-	-	-	-	-	-	-	-	-
2000	993	11	0.67	0.83	1067	11.6	0.75	0.91	-	-	-	-	-	-	-	-	-	-	-	-	-	-	-	-

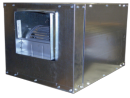
Grey shaded areas meet or exceed the FEI standards for efficiency in California.
 Performance certified is for installation type B: free inlet, ducted outlet. Power rating (BHP) does not include transmission losses. Performance ratings do not include the effect of appurtenances (accessories).
 FEI calculated using AMCA 210 data and default motor efficiency without the motor.
 For complete fan performance please use Delair or consult factory. www.canarm.com/delair



Canarm certifies that the IDB Series shown herein are licensed to bear the AMCA Seal. The ratings shown are based on tests and procedures performed in accordance with AMCA Publications 211 & 311 and comply with the requirements of the AMCA Certified Ratings Programme.

The AMCA certified ratings seal applies to air and sound performance only. The IDB Series shown herein are not approved by AMCA for FEI and FEP ratings.

Note: IDB-X models are not ETL or AMCA certified at this time.



IDB10 / IDBX10

Max RPM: 2500 Max HP: 1-1/2 Shaft size: 3/4"



CFM	1/4" SP				1/2" SP				3/4" SP				1" SP				1-1/2" SP				2" SP			
	RPM	Sone	HP	FEI	RPM	Sone	HP	FEI	RPM	Sone	HP	FEI	RPM	Sone	HP	FEI	RPM	Sone	HP	FEI	RPM	Sone	HP	FEI
100	463	1.7	0.02	0.48	649	3.7	0.04	1.58	792	6	0.07	1.35	912	8.4	0.11	1.20	1114	12.2	0.19	0.95	1285	15.6	0.29	0.79
200	475	2	0.02	1.59	662	4.1	0.05	1.51	806	6.5	0.08	1.35	926	9	0.12	1.18	1129	12.8	0.22	0.94	1299	16.2	0.32	0.84
300	485	2.2	0.03	1.73	674	4.5	0.06	1.57	818	7	0.1	1.35	939	9.6	0.14	1.23	1142	13.3	0.24	1.03	1313	16.7	0.36	0.90
400	493	2.4	0.03	1.95	684	4.9	0.07	1.62	829	7.4	0.11	1.44	951	10	0.16	1.28	1154	13.8	0.27	1.08	1325	17.3	0.39	0.97
500	499	2.5	0.04	1.94	693	5.2	0.08	1.67	839	7.9	0.13	1.43	962	10.4	0.18	1.31	1166	14.3	0.3	1.12	1338	17.8	0.43	1.01
600	501	2.6	0.05	1.92	700	5.4	0.1	1.59	848	8.2	0.15	1.43	971	10.8	0.21	1.29	1177	14.7	0.33	1.15	1349	18.2	0.47	1.04
700	503	2.6	0.05	2.11	705	5.6	0.11	1.63	855	8.5	0.17	1.43	980	11.1	0.23	1.32	1186	15	0.37	1.15	1359	18.7	0.52	1.05
800	510	2.8	0.06	2.07	708	5.7	0.12	1.67	861	8.7	0.19	1.43	987	11.4	0.26	1.31	1195	15.4	0.4	1.18	1369	19.1	0.56	1.08
900	519	3	0.08	1.88	710	5.8	0.14	1.62	865	8.9	0.21	1.44	993	11.7	0.28	1.34	1203	15.7	0.44	1.18	1378	19.5	0.61	1.09
1000	531	3.3	0.09	1.88	713	5.9	0.16	1.58	868	9.1	0.23	1.44	998	11.9	0.31	1.33	1210	16	0.48	1.19	1386	19.8	0.66	1.10
1100	542	3.6	0.11	1.76	719	6.1	0.18	1.56	870	9.1	0.26	1.41	1001	12	0.34	1.32	1216	16.2	0.52	1.19	1394	20.1	0.71	1.11
1200	556	4	0.13	1.68	727	6.4	0.2	1.54	872	9.2	0.28	1.42	1003	12.1	0.37	1.32	1221	16.4	0.56	1.19	1400	20.4	0.76	1.12
1300	573	4.6	0.15	1.62	737	6.8	0.23	1.47	877	9.5	0.31	1.40	1005	12.2	0.4	1.32	1225	16.6	0.61	1.18	1406	20.7	0.82	1.11
1400	593	5.1	0.18	1.51	749	7.2	0.25	1.47	884	9.9	0.34	1.38	1007	12.3	0.44	1.30	1228	16.7	0.65	1.19	1410	20.9	0.88	1.11
1500	616	5.8	0.21	1.43	760	7.7	0.29	1.39	893	10.3	0.38	1.34	1013	12.5	0.47	1.30	1229	16.7	0.7	1.19	1415	21.1	0.94	1.11
1600	640	6.6	0.25	1.33	772	8.2	0.32	1.36	904	10.7	0.42	1.31	1020	12.8	0.52	1.27	1231	16.8	0.74	1.20	1417	21.2	0.99	1.12
1700	666	7.4	0.29	1.25	787	8.8	0.36	1.31	915	11.3	0.46	1.28	1029	13.1	0.56	1.26	1234	16.9	0.79	1.19	1419	21.3	1.05	1.12
1800	692	8.2	0.33	1.20	803	9.5	0.4	1.28	927	11.8	0.51	1.24	1039	13.5	0.62	1.22	1238	17.1	0.85	1.18	1421	21.3	1.11	1.13
1900	719	9.2	0.38	1.13	822	10.4	0.45	1.22	938	12.3	0.56	1.21	1050	13.9	0.67	1.20	1245	17.4	0.91	1.17	1423	21.4	1.18	1.12
2000	747	10.1	0.44	1.06	843	11.2	0.51	1.16	951	12.8	0.61	1.19	1062	14.4	0.73	1.18	1253	17.7	0.98	1.15	1426	21.6	1.25	1.12
2100	776	11.1	0.5	1.01	866	12.1	0.58	1.10	966	13.4	0.67	1.15	1073	14.8	0.8	1.14	1262	18.1	1.05	1.14	1431	21.9	1.32	1.12
2200	805	12.1	0.57	0.96	890	13.1	0.65	1.05	983	14	0.74	1.11	1084	15.3	0.86	1.13	1272	18.5	1.13	1.12	1438	22.3	1.41	1.10
2300	834	13.1	0.64	0.92	915	14.1	0.73	1.00	1001	14.7	0.81	1.08	1097	15.8	0.93	1.10	1282	19	1.21	1.10	1446	22.7	1.5	1.09
2400	864	14.1	0.71	0.89	940	14.9	0.81	0.97	1021	15.3	0.89	1.05	1112	16.4	1.01	1.08	1294	19.5	1.3	1.08	-	-	-	-
2500	894	15.2	0.8	0.85	967	15.7	0.9	0.93	1044	16.1	0.99	1.00	1128	17	1.1	1.05	1307	20	1.39	1.06	-	-	-	-
2600	924	16	0.89	0.82	994	16.6	1	0.89	1067	16.9	1.09	0.97	1146	17.7	1.2	1.01	1317	20.5	1.49	1.04	-	-	-	-
2700	954	16.8	0.98	0.79	1021	17.6	1.1	0.86	1091	17.7	1.2	0.93	1165	18.4	1.3	0.99	-	-	-	-	-	-	-	-
2800	985	17.7	1.09	0.76	1049	18.5	1.21	0.83	1116	18.6	1.32	0.89	1186	19.2	1.41	0.96	-	-	-	-	-	-	-	-
2900	1016	18.6	1.2	0.74	1078	19.3	1.33	0.80	1142	19.5	1.44	0.87	-	-	-	-	-	-	-	-	-	-	-	-
3000	1047	19.5	1.31	0.72	1106	20.2	1.46	0.77	-	-	-	-	-	-	-	-	-	-	-	-	-	-	-	-
3100	1078	20.4	1.44	0.69	-	-	-	-	-	-	-	-	-	-	-	-	-	-	-	-	-	-	-	-

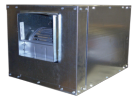
Grey shaded areas meet or exceed the FEI standards for efficiency in California.
 Performance certified is for installation type B: free inlet, ducted outlet. Power rating (BHP) does not include transmission losses. Performance ratings do not include the effect of appurtenances (accessories).
 FEI calculated using AMCA 210 data and default motor efficiency without the motor.
 For complete fan performance please use Delair or consult factory. www.canarm.com/delair



Canarm certifies that the IDB Series shown herein are licensed to bear the AMCA Seal. The ratings shown are based on tests and procedures performed in accordance with AMCA Publications 211 & 311 and comply with the requirements of the AMCA Certified Ratings Programme.

The AMCA certified ratings seal applies to air and sound performance only. The IDB Series shown herein are not approved by AMCA for FEI and FEP ratings.

Note: IDB-X models are not ETL or AMCA certified at this time.



IDB12 / IDBX12

Max RPM: 2140 Max HP: 1-1/2 Shaft size: 3/4"

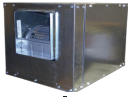


CFM	1/4" SP				1/2" SP				3/4" SP				1" SP				1-1/2" SP				2" SP			
	RPM	Sone	HP	FEI	RPM	Sone	HP	FEI	RPM	Sone	HP	FEI	RPM	Sone	HP	FEI	RPM	Sone	HP	FEI	RPM	Sone	HP	FEI
100	419	0	0.02	1.37	586	4.1	0.05	1.27	715	6.3	0.1	0.97	823	8.7	0.15	0.83	1004	12.8	0.27	0.66	1157	15.3	0.41	0.56
200	434	2.3	0.02	1.59	602	4.6	0.06	1.36	731	6.9	0.11	1.09	839	9.5	0.16	0.96	1020	13.3	0.29	0.75	1173	16	0.43	0.65
300	446	2.7	0.03	1.72	616	5.1	0.07	1.43	745	7.5	0.12	1.19	854	10.2	0.18	1.02	1036	13.9	0.31	0.84	1189	16.6	0.46	0.73
400	457	3	0.04	1.74	629	5.6	0.08	1.49	759	8.1	0.14	1.21	868	10.9	0.2	1.07	1051	14.5	0.34	0.89	1204	17.3	0.5	0.78
500	466	3.3	0.04	1.93	640	6	0.09	1.53	771	8.6	0.15	1.28	881	11.5	0.22	1.12	1065	15.1	0.36	0.96	1219	17.9	0.53	0.84
600	472	3.4	0.05	1.90	650	6.4	0.11	1.47	782	9.2	0.17	1.29	893	12.1	0.24	1.15	1078	15.6	0.4	0.97	1232	18.5	0.57	0.88
700	470	3.4	0.06	1.87	659	6.7	0.13	1.43	792	9.6	0.19	1.30	904	12.6	0.26	1.19	1090	16.1	0.43	1.01	1245	19.2	0.61	0.91
800	460	3.1	0.06	2.03	666	6.9	0.14	1.47	802	10.1	0.22	1.26	914	13	0.29	1.18	1101	16.6	0.47	1.02	1258	19.9	0.66	0.93
900	461	3.1	0.07	2.00	670	7	0.16	1.44	811	10.5	0.24	1.27	924	13.4	0.32	1.18	1112	17	0.5	1.05	1269	20.5	0.7	0.96
1000	468	3.3	0.08	1.97	664	6.9	0.17	1.47	817	10.7	0.27	1.24	933	13.7	0.36	1.15	1122	17.5	0.54	1.06	1280	21.1	0.75	0.97
1100	477	3.6	0.09	1.95	654	6.5	0.17	1.58	820	10.8	0.29	1.26	941	13.9	0.39	1.16	1132	18	0.59	1.05	1290	21.7	0.81	0.97
1200	486	3.8	0.1	1.93	649	6.3	0.18	1.61	816	10.7	0.31	1.27	945	14.1	0.42	1.16	1141	18.3	0.64	1.04	1300	22.3	0.87	0.98
1300	497	4	0.12	1.81	653	6.5	0.2	1.58	806	10.3	0.32	1.32	948	14.1	0.45	1.16	1149	18.6	0.69	1.04	1310	22.9	0.93	0.98
1400	507	4.3	0.14	1.71	661	6.8	0.22	1.55	797	9.8	0.33	1.36	941	13.9	0.47	1.19	1155	18.8	0.75	1.03	1319	23.4	1	0.97
1500	520	4.7	0.15	1.73	670	7.1	0.24	1.54	796	9.8	0.34	1.41	931	13.6	0.49	1.21	1159	18.9	0.79	1.04	1327	23.8	1.07	0.97
1600	533	5	0.17	1.66	679	7.4	0.27	1.47	801	10	0.37	1.38	921	13.3	0.5	1.26	1161	19	0.84	1.03	1333	24	1.14	0.96
1700	546	5.4	0.2	1.54	688	7.7	0.3	1.43	808	10.4	0.4	1.36	918	13.1	0.52	1.28	1154	18.7	0.87	1.06	1337	24.3	1.2	0.97
1800	561	5.8	0.22	1.51	698	8	0.33	1.39	817	10.7	0.44	1.32	922	13.3	0.55	1.28	1144	18.4	0.89	1.09	1340	24.4	1.26	0.97
1900	575	6.2	0.25	1.44	709	8.4	0.36	1.36	827	11.1	0.47	1.31	929	13.5	0.59	1.27	1134	18	0.9	1.13	1339	24.3	1.32	0.98
2000	589	6.6	0.27	1.42	720	8.8	0.39	1.33	836	11.4	0.51	1.29	937	13.8	0.64	1.24	1125	17.6	0.93	1.15	1329	23.9	1.34	1.01
2100	604	7	0.31	1.33	732	9.3	0.43	1.29	845	11.8	0.55	1.26	946	14.1	0.68	1.23	1125	17.6	0.97	1.16	1319	23.4	1.37	1.03
2200	620	7.5	0.34	1.30	745	9.8	0.46	1.27	855	12.2	0.6	1.22	955	14.4	0.73	1.21	1129	17.8	1.02	1.15	1308	22.8	1.39	1.06
2300	635	8	0.37	1.27	759	10.4	0.51	1.22	865	12.6	0.64	1.21	964	14.6	0.78	1.19	1135	18.1	1.07	1.15	1300	22.3	1.42	1.09
2400	651	8.6	0.41	1.22	772	10.9	0.55	1.20	877	13	0.69	1.18	973	14.9	0.84	1.16	1143	18.3	1.13	1.14	1298	22.2	1.47	1.10
2500	667	9.1	0.46	1.16	786	11.4	0.6	1.16	888	13.4	0.74	1.16	983	15.2	0.89	1.15	1152	18.7	1.2	1.13	-	-	-	-
2600	684	9.7	0.5	1.13	801	11.9	0.65	1.13	901	13.9	0.8	1.13	993	15.5	0.95	1.13	1161	19	1.27	1.11	-	-	-	-
2700	701	10.2	0.55	1.09	815	12.4	0.7	1.11	914	14.3	0.86	1.10	1004	15.9	1.02	1.10	1171	19.3	1.35	1.09	-	-	-	-
2800	718	10.9	0.6	1.06	830	12.9	0.76	1.07	927	14.7	0.92	1.08	1015	16.2	1.08	1.09	1179	19.6	1.42	1.08	-	-	-	-
2900	735	11.4	0.65	1.03	844	13.4	0.82	1.05	941	15.1	0.98	1.06	1027	16.6	1.15	1.07	1189	20	1.5	1.07	-	-	-	-
3000	753	12.1	0.71	1.00	859	13.9	0.88	1.02	954	15.5	1.05	1.04	1040	17	1.23	1.04	-	-	-	-	-	-	-	-
3100	770	12.6	0.77	0.97	875	14.4	0.95	1.00	969	15.9	1.13	1.01	1053	17.4	1.31	1.02	-	-	-	-	-	-	-	-
3200	788	13.1	0.84	0.94	890	14.9	1.02	0.97	983	16.4	1.2	1.00	1066	17.8	1.39	1.01	-	-	-	-	-	-	-	-
3300	807	13.5	0.91	0.91	906	15.3	1.1	0.94	997	16.8	1.28	0.98	1079	18.3	1.47	0.99	-	-	-	-	-	-	-	-
3400	825	14	0.98	0.89	922	15.8	1.18	0.92	1012	17.3	1.37	0.95	-	-	-	-	-	-	-	-	-	-	-	-
3500	844	14.5	1.06	0.87	938	16.3	1.26	0.90	1027	17.7	1.46	0.93	-	-	-	-	-	-	-	-	-	-	-	-
3600	862	15	1.14	0.85	954	16.8	1.34	0.89	-	-	-	-	-	-	-	-	-	-	-	-	-	-	-	-
3700	881	15.5	1.22	0.83	971	17.3	1.44	0.86	-	-	-	-	-	-	-	-	-	-	-	-	-	-	-	-
3800	900	16	1.31	0.81	-	-	-	-	-	-	-	-	-	-	-	-	-	-	-	-	-	-	-	-
3900	920	16.6	1.41	0.79	-	-	-	-	-	-	-	-	-	-	-	-	-	-	-	-	-	-	-	-

Grey shaded areas meet or exceed the FEI standards for efficiency in California.
 Performance certified is for installation type B: free inlet, ducted outlet. Power rating (BHP) does not include transmission losses. Performance ratings do not include the effect of appurtenances (accessories).
 FEI calculated using AMCA 210 data and default motor efficiency without the motor.
 For complete fan performance please use Delair or consult factory. www.canarm.com/delair



Canarm certifies that the IDB Series shown herein are licensed to bear the AMCA Seal. The ratings shown are based on tests and procedures performed in accordance with AMCA Publications 211 & 311 and comply with the requirements of the AMCA Certified Ratings Programme.
 The AMCA certified ratings seal applies to air and sound performance only. The IDB Series shown herein are not approved by AMCA for FEI and FEP ratings.
 Note: IDB-X models are not ETL or AMCA certified at this time.



IDB15 / IDBX15

Max RPM: 1800 Max HP: 3 Shaft size: 1"

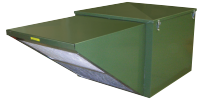


CFM	1/4" SP				1/2" SP				3/4" SP				1" SP				1-1/2" SP				2" SP			
	RPM	Sone	HP	FEI	RPM	Sone	HP	FEI	RPM	Sone	HP	FEI	RPM	Sone	HP	FEI	RPM	Sone	HP	FEI	RPM	Sone	HP	FEI
100	293	1.3	0.02	1.37	410	3.6	0.04	1.42	499	5.4	0.07	1.23	574	7.3	0.1	1.12	700	11.4	0.18	0.91	807	15.2	0.27	0.79
200	305	1.7	0.02	1.59	422	4.1	0.05	1.51	511	6.1	0.09	1.25	587	8.1	0.12	1.18	713	12.3	0.21	0.98	820	16	0.31	0.86
300	316	2.1	0.03	1.72	433	4.5	0.06	1.57	523	6.7	0.1	1.35	599	8.7	0.15	1.17	725	13	0.25	1.00	832	16.6	0.36	0.90
400	325	2.5	0.04	1.73	444	5	0.08	1.48	534	7.2	0.12	1.35	610	9.4	0.17	1.21	737	13.8	0.28	1.04	844	17.3	0.41	0.92
500	333	2.8	0.04	1.92	454	5.5	0.09	1.53	545	7.8	0.14	1.35	621	10.1	0.2	1.20	749	14.5	0.32	1.05	856	18	0.46	0.95
600	340	3.1	0.05	1.89	463	5.9	0.11	1.47	555	8.3	0.16	1.35	632	10.7	0.23	1.19	760	15.2	0.36	1.06	867	18.7	0.51	0.96
700	345	3.3	0.06	1.86	471	6.3	0.12	1.51	564	8.8	0.19	1.29	641	11.4	0.26	1.18	770	15.9	0.4	1.07	878	19.3	0.56	0.98
800	349	3.5	0.06	2.01	478	6.7	0.13	1.54	572	9.3	0.21	1.30	651	11.9	0.28	1.21	780	16.5	0.44	1.07	889	19.9	0.62	0.98
900	352	3.6	0.07	1.97	484	6.9	0.15	1.49	580	9.8	0.23	1.31	659	12.5	0.31	1.21	790	17.2	0.49	1.06	899	20.6	0.67	0.99
1000	355	3.8	0.08	1.94	488	7.2	0.16	1.53	587	10.2	0.25	1.31	667	13	0.34	1.20	799	17.9	0.53	1.07	908	21.2	0.73	0.99
1100	358	3.9	0.09	1.91	492	7.4	0.18	1.49	592	10.5	0.27	1.32	674	13.5	0.37	1.20	807	18.5	0.57	1.07	918	21.8	0.78	1.00
1200	359	4	0.1	1.89	496	7.5	0.19	1.52	597	10.8	0.29	1.32	680	13.9	0.4	1.19	815	19	0.62	1.06	926	22.3	0.84	1.00
1300	360	4	0.11	1.87	499	7.7	0.21	1.49	601	11.1	0.32	1.29	686	14.2	0.43	1.19	823	19.4	0.66	1.07	935	22.8	0.9	1.00
1400	360	4	0.12	1.86	502	7.9	0.22	1.52	605	11.3	0.34	1.30	690	14.5	0.46	1.19	830	19.8	0.71	1.06	942	23.3	0.96	1.00
1500	361	4	0.14	1.75	505	8	0.24	1.49	608	11.5	0.36	1.31	695	14.8	0.49	1.19	835	20.1	0.75	1.07	950	23.8	1.02	1.00
1600	362	4.1	0.15	1.75	507	8.1	0.25	1.52	612	11.7	0.38	1.32	698	15	0.51	1.21	840	20.5	0.79	1.07	957	24.2	1.08	1.00
1700	366	4.2	0.16	1.75	509	8.2	0.27	1.50	615	11.9	0.4	1.32	702	15.2	0.54	1.21	845	20.8	0.83	1.08	963	24.6	1.14	1.00
1800	369	4.4	0.18	1.68	509	8.3	0.29	1.48	617	12.1	0.42	1.33	705	15.4	0.57	1.21	849	21	0.88	1.07	968	24.9	1.19	1.01
1900	373	4.5	0.19	1.68	510	8.3	0.32	1.43	620	12.2	0.45	1.31	708	15.6	0.6	1.21	853	21.3	0.92	1.08	973	25.2	1.25	1.01
2000	374	4.6	0.2	1.69	510	8.3	0.35	1.39	622	12.4	0.47	1.32	711	15.8	0.63	1.21	857	21.5	0.96	1.09	977	25.5	1.3	1.02
2200	376	4.7	0.22	1.71	512	8.4	0.41	1.32	624	12.5	0.54	1.28	716	16.1	0.69	1.22	863	21.9	1.05	1.09	985	26.1	1.42	1.02
2400	380	4.9	0.25	1.68	517	8.7	0.46	1.30	625	12.6	0.62	1.23	719	16.4	0.76	1.21	869	22.3	1.13	1.10	992	26.5	1.53	1.03
2600	389	5.3	0.29	1.61	525	9.1	0.51	1.29	626	12.6	0.71	1.17	721	16.5	0.86	1.17	874	22.6	1.22	1.10	999	27	1.65	1.03
2800	400	5.8	0.34	1.52	529	9.3	0.56	1.28	629	12.8	0.8	1.13	721	16.5	0.98	1.11	879	22.8	1.33	1.09	1005	27.4	1.76	1.04
3000	413	6.4	0.4	1.43	531	9.4	0.6	1.29	636	13.3	0.87	1.13	723	16.6	1.09	1.08	882	23.1	1.44	1.09	1010	27.7	1.88	1.04
3200	428	7.2	0.46	1.37	533	9.6	0.65	1.29	643	13.8	0.94	1.13	725	16.8	1.21	1.05	883	23.1	1.6	1.05	1014	28	2.02	1.04
3400	445	8	0.54	1.28	538	9.9	0.71	1.27	648	14.1	1.01	1.13	732	17.2	1.31	1.04	884	23.1	1.77	1.02	1018	28.3	2.16	1.04
3500	454	8.4	0.58	1.24	542	10.1	0.75	1.26	649	14.2	1.04	1.13	736	17.5	1.36	1.04	884	23.2	1.86	1.00	1019	28.3	2.25	1.03
3600	463	8.9	0.63	1.20	546	10.3	0.79	1.24	650	14.2	1.08	1.13	739	17.7	1.41	1.03	885	23.2	1.95	0.99	1019	28.4	2.36	1.01
4000	503	10.7	0.83	1.08	568	11.7	0.99	1.15	655	14.5	1.23	1.13	749	18.4	1.59	1.04	891	23.6	2.28	0.95	1021	28.5	2.81	0.96
4100	513	11.2	0.89	1.04	574	12.1	1.04	1.13	658	14.7	1.28	1.12	750	18.4	1.63	1.05	895	23.8	2.35	0.95	1021	28.5	2.93	0.94
4200	523	11.7	0.95	1.02	581	12.5	1.1	1.11	661	14.9	1.33	1.12	751	18.5	1.67	1.05	898	24	2.43	0.95	-	-	-	-
4400	544	12.7	1.08	0.97	596	13.4	1.23	1.06	669	15.4	1.45	1.09	753	18.6	1.76	1.06	905	24.4	2.58	0.95	-	-	-	-
4600	565	13.7	1.23	0.92	612	14.4	1.36	1.03	679	16	1.59	1.06	756	18.8	1.87	1.06	912	24.9	2.73	0.94	-	-	-	-
4700	576	14.3	1.31	0.89	620	14.9	1.44	1.01	684	16.4	1.66	1.05	758	19	1.94	1.05	915	25.1	2.8	0.94	-	-	-	-
4800	586	14.8	1.39	0.87	629	15.5	1.52	0.99	690	16.8	1.74	1.03	761	19.2	2.01	1.04	916	25.1	2.86	0.95	-	-	-	-
5000	608	15.9	1.56	0.83	647	16.6	1.69	0.95	702	17.5	1.9	1.00	769	19.7	2.17	1.02	918	25.3	2.98	0.96	-	-	-	-
5100	619	16.4	1.65	0.82	656	17.2	1.78	0.93	709	18	1.98	0.99	773	20	2.25	1.01	-	-	-	-	-	-	-	-
5200	630	17	1.74	0.80	666	17.8	1.87	0.91	716	18.4	2.07	0.98	778	20.4	2.34	1.00	-	-	-	-	-	-	-	-
5500	662	18.6	2.05	0.75	695	19.4	2.18	0.86	738	20	2.36	0.93	794	21.6	2.63	0.97	-	-	-	-	-	-	-	-
5800	695	20.4	2.39	0.71	726	21.2	2.52	0.81	763	21.7	2.69	0.89	813	22.9	2.95	0.93	-	-	-	-	-	-	-	-
6000	717	21.6	2.64	0.69	746	22.4	2.77	0.79	781	23	2.94	0.86	-	-	-	-	-	-	-	-	-	-	-	-
6100	728	22.2	2.77	0.68	757	23	2.9	0.77	-	-	-	-	-	-	-	-	-	-	-	-	-	-	-	-

Grey shaded areas meet or exceed the FEI standards for efficiency in California.
 Performance certified is for installation type B: free inlet, ducted outlet. Power rating (BHP) does not include transmission losses. Performance ratings do not include the effect of appurtenances (accessories).
 FEI calculated using AMCA 210 data and default motor efficiency without the motor.
 For complete fan performance please use Delair or consult factory. www.canarm.com/delair



Canarm certifies that the IDB Series shown herein are licensed to bear the AMCA Seal. The ratings shown are based on tests and procedures performed in accordance with AMCA Publications 211 & 311 and comply with the requirements of the AMCA Certified Ratings Programme.
 The AMCA certified ratings seal applies to air and sound performance only. The IDB Series shown herein are not approved by AMCA for FEI and FEP ratings.
 Note: IDB-X models are not ETL or AMCA certified at this time.



SIS-9

Max RPM: 2800 Max HP: 1-1/2 Shaft size: 3/4"

CFM	1/4" SP				1/2" SP				3/4" SP				1" SP				1-1/2" SP				2" SP			
	RPM	Sone	HP	FEI	RPM	Sone	HP	FEI	RPM	Sone	HP	FEI	RPM	Sone	HP	FEI	RPM	Sone	HP	FEI	RPM	Sone	HP	FEI
100	540	5.4	0.02	1.37	755	11.5	0.04	1.42	920	16.3	0.08	1.13	1058	20.5	0.11	1.05	1291	30.1	0.2	0.84	1487	40.1	0.31	0.70
200	554	6	0.02	1.59	773	12.7	0.05	1.51	940	17.6	0.09	1.25	1080	21.9	0.14	1.06	1314	32	0.23	0.91	1510	42.3	0.35	0.78
300	558	6.2	0.03	1.73	785	13.5	0.07	1.43	955	18.5	0.11	1.27	1097	23.1	0.16	1.12	1332	33.7	0.27	0.94	1530	44.5	0.39	0.84
400	554	6	0.04	1.76	790	13.8	0.08	1.50	964	19.1	0.13	1.28	1108	24	0.18	1.17	1347	35	0.3	0.99	1547	46.4	0.44	0.87
500	563	6.5	0.05	1.76	785	13.5	0.09	1.55	967	19.2	0.15	1.30	1115	24.5	0.21	1.17	1359	36.1	0.34	1.01	1561	47.9	0.48	0.92
600	577	7.3	0.06	1.76	786	13.5	0.11	1.50	962	18.9	0.16	1.37	1117	24.6	0.23	1.21	1366	36.7	0.38	1.03	1571	49.1	0.53	0.94
700	597	8.4	0.08	1.62	795	14.1	0.13	1.46	961	18.8	0.18	1.38	1110	24.1	0.25	1.25	1368	37	0.41	1.06	1577	49.8	0.58	0.96
800	622	9.5	0.1	1.52	809	14.9	0.15	1.44	968	19.3	0.21	1.34	1109	24	0.28	1.25	1364	36.6	0.45	1.08	1580	50	0.63	0.98
900	650	10.7	0.12	1.46	826	15.9	0.18	1.37	979	19.9	0.25	1.27	1116	24.5	0.32	1.22	1358	36	0.48	1.11	1577	49.8	0.68	1.00
1000	681	12	0.15	1.35	847	17	0.22	1.27	993	20.6	0.29	1.22	1126	25.3	0.36	1.19	1359	36.1	0.53	1.10	1570	49	0.72	1.03
1100	712	13.6	0.19	1.22	872	18.2	0.26	1.20	1011	22	0.33	1.19	1139	26.3	0.41	1.16	1366	36.8	0.58	1.10	1567	48.7	0.77	1.04
1200	746	15.3	0.23	1.14	899	19.4	0.3	1.15	1032	23.5	0.38	1.14	1155	27.6	0.47	1.11	1377	37.7	0.65	1.07	1572	49.2	0.84	1.04
1300	782	17.1	0.27	1.08	928	20.9	0.36	1.07	1056	25	0.44	1.08	1174	29.2	0.53	1.07	1389	38.7	0.72	1.05	1580	50.1	0.92	1.02
1400	820	19	0.33	0.99	958	22.4	0.42	1.01	1082	26.4	0.51	1.02	1195	30.9	0.6	1.03	1403	39.9	0.8	1.02	1591	51	1.01	1.00
1500	860	20.8	0.39	0.92	990	23.9	0.48	0.96	1110	27.9	0.58	0.98	1219	32.5	0.68	0.98	1420	41.4	0.89	0.99	1603	52.1	1.11	0.98
1600	901	22.7	0.46	0.86	1022	25.5	0.56	0.90	1139	29.6	0.66	0.93	1245	34	0.77	0.94	1439	43	0.98	0.96	1618	53.4	1.21	0.96
1700	943	24.7	0.54	0.81	1056	27.2	0.64	0.86	1169	31.2	0.75	0.89	1272	35.6	0.86	0.91	1461	44.9	1.09	0.93	1634	54.8	1.33	0.94
1800	986	26.8	0.63	0.76	1092	29	0.74	0.81	1200	32.9	0.85	0.85	1301	37.3	0.97	0.87	1484	46.8	1.2	0.90	1653	56.1	1.45	0.91
1900	1029	28.9	0.73	0.72	1129	31.1	0.84	0.77	1232	34.6	0.96	0.81	1331	39	1.08	0.83	1509	48.4	1.33	0.87	-	-	-	-
2000	1072	31.3	0.84	0.68	1168	33.3	0.95	0.74	1266	36.5	1.08	0.77	1362	40.8	1.21	0.80	1535	50.2	1.47	0.84	-	-	-	-
2100	1116	33.7	0.96	0.64	1208	35.6	1.08	0.70	1300	38.5	1.2	0.74	1393	42.6	1.34	0.77	-	-	-	-	-	-	-	-
2200	1160	36.1	1.09	0.62	1249	38.1	1.22	0.67	1336	40.5	1.34	0.71	1425	44.5	1.48	0.74	-	-	-	-	-	-	-	-
2300	1205	38.8	1.24	0.59	1290	40.7	1.36	0.64	1373	42.9	1.5	0.68	-	-	-	-	-	-	-	-	-	-	-	-
2400	1250	41.5	1.39	0.56	-	-	-	-	-	-	-	-	-	-	-	-	-	-	-	-	-	-	-	-

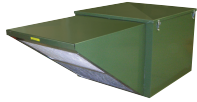
Grey shaded areas meet or exceed the FEI standards for efficiency in California.
 Performance certified is for installation type B: free inlet, ducted outlet. Power rating (BHP) does not include transmission losses. Performance ratings do not include the effect of appurtenances (accessories).

FEI calculated using AMCA 210 data and default motor efficiency without the motor.
 For complete fan performance please use Delair or consult factory. www.canarm.com/delair



Canarm certifies that the SIS Series shown herein are licensed to bear the AMCA Seal. The ratings shown are based on tests and procedures performed in accordance with AMCA Publications 211 & 311 and comply with the requirements of the AMCA Certified Ratings Programme.

The AMCA certified ratings seal applies to air and sound performance only. The SIS Series shown herein are not approved by AMCA for FEI and FEP ratings.



SIS-10

Max RPM: 2500 Max HP: 1-1/2 Shaft size: 3/4"

CFM	1/4" SP				1/2" SP				3/4" SP				1" SP				1-1/2" SP				2" SP			
	RPM	Sone	HP	FEI	RPM	Sone	HP	FEI	RPM	Sone	HP	FEI	RPM	Sone	HP	FEI	RPM	Sone	HP	FEI	RPM	Sone	HP	FEI
100	460	6	0.02	0.48	640	11.7	0.04	1.42	779	17.1	0.07	1.35	895	20.8	0.11	1.12	1090	27.5	0.2	0.91	1254	34.6	0.3	0.77
200	481	6.8	0.02	1.59	664	13	0.05	1.51	804	18.4	0.08	1.35	921	22.2	0.12	1.18	1117	29.1	0.21	0.98	1281	36.7	0.32	0.84
300	497	7.4	0.03	1.73	684	14.2	0.06	1.57	825	19.6	0.1	1.35	944	23.4	0.14	1.23	1141	30.6	0.24	1.03	1306	38.9	0.35	0.92
400	505	7.7	0.03	1.95	700	15.1	0.07	1.62	844	20.5	0.11	1.44	963	24.5	0.16	1.28	1163	32	0.26	1.11	1329	40.9	0.38	0.99
500	501	7.5	0.04	1.94	710	15.7	0.08	1.67	858	21.3	0.13	1.43	980	25.4	0.18	1.31	1182	33.1	0.29	1.15	1350	42.8	0.42	1.03
600	499	7.4	0.05	1.92	715	16.1	0.1	1.59	869	21.8	0.15	1.43	994	26.2	0.21	1.29	1199	34.1	0.33	1.15	1369	44.6	0.46	1.06
700	510	7.9	0.07	1.73	710	15.7	0.12	1.53	875	22.2	0.17	1.43	1004	26.8	0.23	1.32	1213	35.1	0.36	1.18	1385	46.3	0.51	1.07
800	525	8.5	0.08	1.73	704	15.3	0.14	1.49	873	22.1	0.2	1.38	1010	27.2	0.27	1.27	1224	36.1	0.4	1.18	1400	47.8	0.56	1.08
900	541	9.1	0.1	1.62	710	15.7	0.16	1.47	866	21.7	0.23	1.34	1010	27.2	0.3	1.26	1233	36.8	0.45	1.16	1411	49	0.61	1.09
1000	559	10	0.12	1.54	723	16.5	0.19	1.39	862	21.5	0.26	1.31	1003	26.7	0.34	1.23	1238	37.2	0.5	1.14	1421	50	0.67	1.08
1100	579	11.1	0.15	1.40	737	17.5	0.22	1.33	870	21.9	0.3	1.25	997	26.4	0.37	1.23	1238	37.2	0.55	1.13	1427	50.7	0.73	1.08
1200	600	12.3	0.18	1.31	753	18.5	0.26	1.25	882	22.5	0.34	1.21	998	26.4	0.42	1.19	1230	36.6	0.6	1.13	1431	51.2	0.8	1.07
1300	624	13.7	0.21	1.25	770	19.6	0.3	1.19	896	23.3	0.38	1.18	1008	27	0.47	1.15	1223	36	0.66	1.10	1427	50.8	0.87	1.06
1400	649	15.1	0.25	1.16	788	20.6	0.34	1.14	911	24.1	0.44	1.11	1020	27.8	0.53	1.11	1220	35.7	0.72	1.09	1420	49.9	0.94	1.05
1500	675	16.6	0.29	1.10	808	21.5	0.39	1.09	927	25	0.49	1.08	1035	28.7	0.59	1.07	1225	36.1	0.79	1.07	1413	49.2	1.02	1.03
1600	701	18.3	0.33	1.06	828	22.6	0.45	1.02	944	25.9	0.55	1.04	1050	29.5	0.66	1.03	1235	37	0.87	1.04	1409	48.8	1.1	1.02
1700	728	20.2	0.39	0.98	850	23.8	0.5	0.99	963	27	0.62	0.99	1065	30.5	0.73	1.00	1248	38	0.96	1.00	1412	49.1	1.19	1.00
1800	755	22.1	0.44	0.94	873	25	0.57	0.94	982	28.1	0.69	0.95	1082	31.4	0.81	0.96	1262	39.2	1.05	0.98	1421	50.1	1.29	0.98
1900	782	23.7	0.51	0.88	898	26.3	0.64	0.90	1002	29.3	0.77	0.92	1100	32.5	0.9	0.93	1277	40.5	1.15	0.95	1433	51.4	1.4	0.96
2000	810	24.9	0.58	0.84	923	27.7	0.71	0.87	1023	30.5	0.85	0.89	1119	33.5	0.99	0.90	1292	41.8	1.25	0.92	-	-	-	-
2100	838	26.2	0.66	0.80	949	29.1	0.8	0.83	1045	31.7	0.94	0.85	1138	34.7	1.09	0.87	1308	43.3	1.37	0.89	-	-	-	-
2200	867	27.6	0.74	0.76	975	30.5	0.88	0.81	1069	33	1.04	0.82	1158	36	1.19	0.84	1325	44.9	1.49	0.87	-	-	-	-
2300	896	29	0.83	0.73	1002	31.9	0.98	0.77	1093	34.4	1.14	0.80	1179	37.3	1.3	0.82	-	-	-	-	-	-	-	-
2400	925	30.5	0.93	0.70	1028	33.4	1.09	0.74	1118	36	1.25	0.77	1201	38.7	1.42	0.79	-	-	-	-	-	-	-	-
2500	955	32	1.04	0.67	1055	34.9	1.2	0.72	1143	37.5	1.37	0.75	-	-	-	-	-	-	-	-	-	-	-	-
2600	986	33.5	1.16	0.64	1082	36.5	1.32	0.69	1169	39	1.5	0.72	-	-	-	-	-	-	-	-	-	-	-	-
2700	1017	35.2	1.28	0.62	1110	38.1	1.46	0.67	-	-	-	-	-	-	-	-	-	-	-	-	-	-	-	-
2800	1048	37	1.42	0.60	-	-	-	-	-	-	-	-	-	-	-	-	-	-	-	-	-	-	-	-

Grey shaded areas meet or exceed the FEI standards for efficiency in California.
 Performance certified is for installation type B: free inlet, ducted outlet. Power rating (BHP) does not include transmission losses. Performance ratings do not include the effect of appurtenances (accessories).

FEI calculated using AMCA 210 data and default motor efficiency without the motor.
 For complete fan performance please use Delair or consult factory. www.canarm.com/delair



Canarm certifies that the SIS Series shown herein are licensed to bear the AMCA Seal. The ratings shown are based on tests and procedures performed in accordance with AMCA Publications 211 & 311 and comply with the requirements of the AMCA Certified Ratings Programme.

The AMCA certified ratings seal applies to air and sound performance only. The SIS Series shown herein are not approved by AMCA for FEI and FEP ratings.