

# BI-10

Max RPM: 3700 Max HP: 2 Shaft size: 3/4"

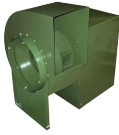
CFM	1/2" SP				1" SP				1-1/2" SP				2" SP				3" SP				4" SP				5" SP							
	RPM	Sone	HP	FEI	RPM	Sone	HP	FEI	RPM	Sone	HP	FEI	RPM	Sone	HP	FEI	RPM	Sone	HP	FEI	RPM	Sone	HP	FEI	RPM	Sone	HP	FEI	RPM	Sone	HP	FEI
100	1070	3.3	0.03	1.58	1516	6.5	0.08	1.30	1860	9.4	0.15	1.04	2150	12.1	0.22	0.93	2637	17	0.41	0.74	3048	21.6	0.62	0.64	3410	26.1	0.86	0.57				
200	1083	3.4	0.04	1.69	1516	6.5	0.1	1.35	1854	9.3	0.17	1.16	2141	12	0.25	1.03	2624	16.8	0.44	0.86	3033	21.4	0.66	0.75	3394	25.9	0.91	0.67				
300	1104	3.5	0.05	1.75	1536	6.7	0.12	1.39	1867	9.4	0.2	1.20	2147	12.1	0.28	1.11	2623	16.8	0.48	0.94	3028	21.4	0.72	0.83	3386	25.8	0.98	0.75				
400	1136	3.8	0.06	1.80	1556	6.8	0.14	1.42	1889	9.6	0.23	1.24	2167	12.3	0.33	1.12	2635	16.9	0.54	0.99	3033	21.4	0.78	0.89	3387	25.8	1.05	0.82				
500	1203	4.2	0.07	1.85	1580	7	0.16	1.45	1908	9.7	0.26	1.27	2189	12.5	0.37	1.15	2657	17.2	0.61	1.01	3051	21.6	0.87	0.92	3399	25.9	1.15	0.86				
600	1288	5	0.09	1.75	1626	7.4	0.18	1.48	1932	10	0.29	1.30	2208	12.7	0.41	1.18	2678	17.4	0.67	1.04	3073	21.9	0.96	0.95	3420	26.2	1.26	0.89				
700	1381	5.8	0.12	1.59	1696	7.9	0.21	1.46	1972	10.3	0.32	1.33	2233	12.9	0.44	1.23	2697	17.6	0.73	1.07	3094	22.1	1.04	0.98	3443	26.4	1.37	0.91				
800	1481	6.8	0.15	1.49	1778	8.7	0.24	1.44	2035	10.9	0.36	1.32	2272	13.2	0.48	1.26	2719	17.8	0.78	1.11	3112	22.3	1.12	1.01	3462	26.6	1.47	0.94				
900	1588	7.8	0.18	1.42	1869	9.7	0.29	1.35	2111	11.6	0.41	1.30	2333	13.7	0.54	1.24	2749	18.1	0.84	1.13	3134	22.5	1.19	1.04	3481	26.8	1.56	0.97				
1000	1704	8.9	0.23	1.28	1963	10.7	0.34	1.29	2196	12.6	0.46	1.28	2407	14.3	0.6	1.23	2794	18.6	0.9	1.16	3161	22.8	1.26	1.07	3503	27.1	1.65	1.00				
1100	1824	10.2	0.28	1.20	2062	11.9	0.4	1.23	2287	13.6	0.53	1.23	2488	15.3	0.67	1.21	2856	19.2	0.98	1.16	3199	23.2	1.34	1.09	3529	27.3	1.74	1.03				
1200	1948	11.6	0.33	1.14	2167	13.1	0.47	1.16	2380	14.7	0.6	1.19	2576	16.4	0.75	1.18	2929	19.9	1.07	1.15	3253	23.8	1.43	1.11	3564	27.7	1.84	1.05				
1300	2073	13	0.4	1.05	2278	14.4	0.54	1.11	2478	16	0.69	1.13	2668	17.7	0.84	1.15	3008	20.8	1.18	1.13	3319	24.5	1.55	1.10	3612	28.3	1.95	1.07				
1400	2201	14.5	0.47	1.00	2394	15.8	0.63	1.05	2580	17.3	0.79	1.08	2762	18.9	0.94	1.11	3093	22	1.29	1.12	3393	25.3	1.67	1.10	-	-	-	-				
1500	2330	16.1	0.56	0.93	2513	17.3	0.72	1.00	2687	18.7	0.89	1.04	2860	20.2	1.06	1.07	3183	23.3	1.41	1.10	3473	26.3	1.81	1.09	-	-	-	-				
1600	2461	17.7	0.65	0.88	2634	18.8	0.83	0.95	2799	20.1	1.01	1.00	2962	21.6	1.19	1.03	3275	24.6	1.55	1.07	3557	27.5	1.96	1.07	-	-	-	-				
1700	2592	19.2	0.76	0.83	2758	20.4	0.94	0.91	2914	21.7	1.13	0.96	3068	23	1.33	0.99	3369	26	1.71	1.04	-	-	-	-	-	-	-	-				
1800	2725	20.9	0.88	0.79	2884	22.1	1.07	0.87	3033	23.3	1.27	0.92	3177	24.6	1.48	0.96	3466	27.4	1.88	1.01	-	-	-	-	-	-	-	-				
1900	2859	22.7	1.01	0.75	3011	23.8	1.21	0.84	3154	25	1.42	0.89	3292	26.2	1.64	0.92	-	-	-	-	-	-	-	-	-	-	-	-				
2000	2993	24.5	1.16	0.72	3139	25.6	1.37	0.80	3276	26.7	1.59	0.85	3409	27.8	1.81	0.90	-	-	-	-	-	-	-	-	-	-	-	-				
2100	3128	26.3	1.31	0.69	3268	27.4	1.54	0.77	3401	28.5	1.77	0.82	3528	29.7	2	0.87	-	-	-	-	-	-	-	-	-	-	-	-				
2200	3264	28.2	1.49	0.66	3398	29.3	1.72	0.74	3526	30.5	1.96	0.80	-	-	-	-	-	-	-	-	-	-	-	-	-	-	-	-				
2300	3400	30.3	1.68	0.64	3529	31.4	1.92	0.71	-	-	-	-	-	-	-	-	-	-	-	-	-	-	-	-	-	-	-	-				
2400	3537	32.5	1.89	0.61	-	-	-	-	-	-	-	-	-	-	-	-	-	-	-	-	-	-	-	-	-	-	-	-				

Grey shaded areas meet or exceed the FEI standards for efficiency in California.  
 Performance certified is for installation type B: free inlet, ducted outlet. Power rating (BHP) does not include transmission losses. Performance ratings do not include the effect of appurtenances (accessories).  
 FEI calculated using AMCA 210 data and default motor efficiency without the motor.  
 For complete fan performance please use Delair or consult factory. [www.canarm.com/delair](http://www.canarm.com/delair)



Canarm certifies that the BI Series shown herein are licensed to bear the AMCA Seal. The ratings shown are based on tests and procedures performed in accordance with AMCA Publications 211 and comply with the requirements of the AMCA Certified Ratings Programme.

The AMCA certified ratings seal applies to air performance only. The BI Series shown herein are not approved by AMCA for FEI and FEP ratings.



# BI-12

Max RPM: 3200 Max HP: 3 Shaft size: 1"



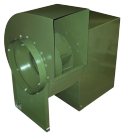
CFM	1/2" SP				1" SP				1-1/2" SP				2" SP				3" SP				4" SP				5" SP						
	RPM	Sone	HP	FEI	RPM	Sone	HP	FEI	RPM	Sone	HP	FEI	RPM	Sone	HP	FEI	RPM	Sone	HP	FEI	RPM	Sone	HP	FEI	RPM	Sone	HP	FEI	RPM	Sone	HP
100	924	4.4	0.03	1.58	1312	9.7	0.09	1.20	1610	14.4	0.16	0.99	1861	19.1	0.24	0.87	2284	27.9	0.43	0.71	2640	36.7	0.65	0.61	2954	45.4	0.9	0.55			
200	925	4.4	0.04	1.68	1304	9.3	0.1	1.35	1599	13.7	0.18	1.11	1848	18.2	0.26	0.99	2269	26.7	0.46	0.82	2624	35.3	0.7	0.71	2937	43.5	0.96	0.64			
300	937	4.8	0.05	1.74	1310	9.6	0.12	1.38	1598	13.6	0.2	1.20	1844	17.9	0.29	1.07	2260	26.1	0.5	0.91	2613	34.4	0.75	0.80	2924	42.2	1.03	0.72			
400	949	5	0.06	1.79	1322	10.1	0.14	1.41	1608	14.3	0.23	1.23	1850	18.3	0.32	1.14	2259	26	0.55	0.97	2608	34	0.81	0.86	2917	41.6	1.1	0.79			
500	966	5.2	0.07	1.82	1334	10.3	0.15	1.51	1621	15.1	0.25	1.30	1861	19.1	0.36	1.17	2266	26.5	0.6	1.02	2610	34.2	0.87	0.92	2915	41.4	1.17	0.85			
600	1004	5.7	0.08	1.86	1346	10.4	0.17	1.53	1632	15.3	0.28	1.32	1875	19.8	0.4	1.19	2278	27.4	0.66	1.05	2620	34.9	0.94	0.96	2922	42	1.25	0.89			
700	1051	6.9	0.1	1.76	1365	10.6	0.19	1.55	1644	15.6	0.31	1.34	1885	20	0.44	1.22	2292	28.4	0.71	1.09	2631	35.9	1.02	0.99	2932	43	1.35	0.92			
800	1100	7.7	0.11	1.80	1398	11.1	0.21	1.56	1659	15.8	0.34	1.36	1898	20.2	0.47	1.26	2303	28.7	0.77	1.11	2645	37.1	1.09	1.02	2944	44.3	1.44	0.95			
900	1161	8.8	0.14	1.64	1444	11.9	0.24	1.53	1683	16.3	0.37	1.38	1912	20.5	0.51	1.28	2314	29	0.82	1.14	2657	37.5	1.17	1.04	2958	45.9	1.53	0.98			
1000	1231	10.1	0.16	1.61	1492	14.2	0.28	1.46	1722	17	0.4	1.40	1933	20.9	0.55	1.29	2327	29.3	0.88	1.16	2668	37.8	1.24	1.07	2971	46.3	1.63	1.00			
1100	1305	11.3	0.19	1.52	1540	15.3	0.31	1.45	1768	17.8	0.45	1.36	1965	21.5	0.59	1.31	2341	29.6	0.93	1.19	2680	38.1	1.31	1.10	2981	46.6	1.72	1.03			
1200	1381	12.6	0.23	1.41	1595	16.5	0.35	1.41	1816	20.7	0.49	1.36	2008	22.4	0.65	1.29	2361	30.1	0.99	1.20	2693	38.4	1.38	1.12	2992	47	1.8	1.06			
1300	1456	14.2	0.27	1.33	1661	17.9	0.4	1.35	1863	21.8	0.54	1.33	2056	23.4	0.71	1.28	2389	30.8	1.05	1.22	2709	38.9	1.45	1.14	3005	47.4	1.89	1.08			
1400	1532	15.8	0.31	1.27	1731	19.5	0.45	1.30	1914	23	0.6	1.30	2103	27.1	0.77	1.27	2429	31.8	1.13	1.21	2730	39.4	1.53	1.16	3020	47.9	1.98	1.10			
1500	1610	17.4	0.36	1.20	1805	21	0.51	1.25	1972	24.4	0.66	1.27	2150	28.3	0.84	1.25	2474	33	1.21	1.21	2758	40.1	1.62	1.16	3038	48.5	2.08	1.11			
1600	1689	19.1	0.42	1.13	1880	22.8	0.58	1.19	2040	26	0.74	1.22	2201	29.8	0.91	1.23	2522	34.3	1.3	1.20	2797	41.2	1.72	1.17	3061	49.4	2.18	1.12			
1700	1769	20.8	0.48	1.08	1956	24.6	0.65	1.14	2110	27.8	0.82	1.18	2257	31.3	0.99	1.21	2569	39.7	1.4	1.19	2842	42.4	1.83	1.16	3091	50.4	2.29	1.13			
1800	1850	22.7	0.54	1.04	2031	26.4	0.73	1.09	2183	29.8	0.91	1.14	2323	33.2	1.08	1.18	2616	41.1	1.5	1.17	2889	43.8	1.95	1.15	3132	51.9	2.42	1.13			
1900	1932	24.6	0.61	0.99	2106	28.3	0.81	1.06	2257	31.9	1	1.11	2392	35.3	1.19	1.14	2665	42.6	1.6	1.16	2939	51.1	2.07	1.15	3177	53.6	2.56	1.13			
2000	2016	26.6	0.69	0.95	2183	30.4	0.9	1.02	2333	34.1	1.11	1.06	2463	37.6	1.3	1.11	2718	44.3	1.72	1.15	2984	53.1	2.2	1.14	-	-	-	-			
2100	2100	28.8	0.78	0.90	2260	32.6	1	0.98	2409	36.5	1.22	1.03	2537	39.9	1.42	1.08	2776	46.2	1.84	1.13	3031	55.1	2.33	1.13	-	-	-	-			
2200	2185	31.2	0.88	0.86	2339	34.9	1.1	0.95	2484	38.8	1.33	1.00	2611	42.1	1.55	1.04	2842	48.5	1.99	1.10	3081	57.3	2.48	1.12	-	-	-	-			
2300	2271	33.6	0.98	0.83	2418	37.4	1.22	0.91	2559	41.1	1.46	0.97	2687	44.5	1.69	1.01	2911	51.2	2.14	1.08	3133	59.7	2.63	1.11	-	-	-	-			
2400	2357	36.2	1.09	0.80	2498	39.9	1.34	0.88	2635	43.5	1.59	0.94	2763	47	1.84	0.98	2981	54.2	2.3	1.05	3190	62.3	2.79	1.09	-	-	-	-			
2500	2444	39	1.21	0.77	2579	42.4	1.47	0.85	2712	45.9	1.73	0.91	2838	49.6	1.99	0.95	3054	57.3	2.48	1.03	-	-	-	-	-	-	-	-			
2600	2531	41.8	1.34	0.74	2661	44.9	1.61	0.83	2790	48.5	1.88	0.89	2913	52.5	2.15	0.93	3128	60.6	2.66	1.00	-	-	-	-	-	-	-	-			
2700	2618	44.5	1.48	0.72	2744	47.6	1.76	0.80	2869	51.4	2.04	0.86	2989	55.7	2.32	0.91	-	-	-	-	-	-	-	-	-	-	-	-			
2800	2706	47.3	1.63	0.70	2827	50.5	1.92	0.78	2948	54.6	2.21	0.84	3065	59	2.5	0.88	-	-	-	-	-	-	-	-	-	-	-	-			
2900	2794	50.4	1.79	0.67	2912	53.8	2.09	0.75	3028	58	2.39	0.81	3142	62.5	2.69	0.86	-	-	-	-	-	-	-	-	-	-	-	-			
3000	2883	53.6	1.96	0.66	2996	57.4	2.27	0.73	3109	61.6	2.58	0.79	-	-	-	-	-	-	-	-	-	-	-	-	-	-	-	-			

Grey shaded areas meet or exceed the FEI standards for efficiency in California.  
 Performance certified is for installation type B: free inlet, ducted outlet. Power rating (BHP) does not include transmission losses. Performance ratings do not include the effect of appurtenances (accessories).  
 FEI calculated using AMCA 210 data and default motor efficiency without the motor.  
 For complete fan performance please use Delair or consult factory. [www.canarm.com/delair](http://www.canarm.com/delair)



Canarm certifies that the BI Series shown herein are licensed to bear the AMCA Seal. The ratings shown are based on tests and procedures performed in accordance with AMCA Publications 211 and comply with the requirements of the AMCA Certified Ratings Programme.

The AMCA certified ratings seal applies to air performance only. The BI Series shown herein are not approved by AMCA for FEI and FEP ratings.



# BI-13

Max RPM: 2900 Max HP: 5 Shaft size: 1"

CFM	1/2" SP				1" SP				1-1/2" SP				2" SP				3" SP				4" SP				5" SP							
	RPM	Sone	HP	FEI	RPM	Sone	HP	FEI	RPM	Sone	HP	FEI	RPM	Sone	HP	FEI	RPM	Sone	HP	FEI	RPM	Sone	HP	FEI	RPM	Sone	HP	FEI	RPM	Sone	HP	FEI
100	854	5.5	0.04	1.58	1213	11.7	0.1	1.30	1489	16.9	0.17	1.04	1722	22.1	0.26	0.90	2113	32.1	0.47	0.72	2443	42.5	0.71	0.62	2733	52.4	0.98	0.55				
200	846	5.4	0.04	1.68	1202	11.6	0.11	1.26	1476	16.8	0.2	1.02	1708	21.9	0.29	0.91	2098	31.7	0.52	0.74	2427	41.8	0.78	0.65	2717	51.6	1.07	0.58				
300	845	5.4	0.05	1.74	1195	11.5	0.13	1.30	1468	16.7	0.22	1.11	1698	21.8	0.32	0.99	2086	31.5	0.56	0.82	2414	41.6	0.84	0.72	2703	51.4	1.15	0.65				
400	850	5.4	0.06	1.78	1195	11.5	0.14	1.41	1463	16.7	0.24	1.19	1692	21.7	0.35	1.06	2077	31.4	0.61	0.88	2404	41.5	0.9	0.79	2692	51.2	1.22	0.72				
500	857	5.5	0.07	1.82	1199	11.5	0.15	1.51	1464	16.7	0.26	1.26	1689	21.7	0.38	1.12	2072	31.3	0.65	0.95	2396	41.3	0.96	0.84	2683	51	1.3	0.77				
600	867	5.6	0.08	1.84	1204	11.6	0.17	1.52	1468	16.7	0.28	1.32	1691	21.7	0.4	1.19	2069	31.3	0.69	1.01	2391	41.2	1.01	0.90	2677	50.9	1.37	0.82				
700	890	6.1	0.09	1.87	1212	11.7	0.19	1.54	1473	16.8	0.3	1.37	1695	21.8	0.43	1.24	2070	31.3	0.73	1.06	2389	41.2	1.07	0.94	2673	50.9	1.44	0.87				
800	923	6.8	0.1	1.90	1220	11.9	0.21	1.55	1480	16.8	0.33	1.38	1700	21.8	0.46	1.28	2073	31.4	0.76	1.12	2390	41.2	1.11	1.00	2671	50.8	1.5	0.92				
900	959	7.6	0.12	1.81	1235	12.3	0.23	1.57	1488	16.9	0.36	1.40	1707	21.9	0.5	1.29	2078	31.4	0.81	1.15	2393	41.3	1.16	1.05	2673	50.9	1.56	0.96				
1000	1000	8.5	0.14	1.75	1262	13	0.25	1.58	1497	17.2	0.38	1.44	1715	22	0.54	1.31	2084	31.5	0.86	1.18	2398	41.4	1.22	1.08	2676	50.9	1.62	1.00				
1100	1046	9.7	0.16	1.70	1295	13.8	0.28	1.55	1512	17.6	0.41	1.45	1723	22.1	0.57	1.34	2090	31.6	0.92	1.19	2403	41.4	1.28	1.11	2680	51	1.69	1.04				
1200	1097	11.1	0.18	1.66	1329	14.6	0.31	1.53	1538	18.3	0.45	1.44	1735	22.5	0.61	1.35	2099	31.7	0.97	1.22	2409	41.5	1.36	1.13	2685	51.1	1.77	1.07				
1300	1149	12.6	0.21	1.58	1367	15.7	0.34	1.51	1569	19.3	0.49	1.43	1753	23.1	0.65	1.36	2107	31.8	1.03	1.23	2416	41.7	1.43	1.15	2691	51.2	1.86	1.09				
1400	1205	14.3	0.24	1.51	1408	16.9	0.38	1.46	1604	20.4	0.53	1.42	1780	24	0.7	1.36	2116	32.2	1.08	1.25	2425	41.8	1.51	1.16	2697	51.3	1.95	1.10				
1500	1262	16.2	0.27	1.46	1453	18.3	0.42	1.43	1639	21.5	0.58	1.39	1812	25.1	0.75	1.35	2129	32.8	1.14	1.26	2433	42	1.58	1.18	2705	51.4	2.05	1.12				
1600	1321	17.5	0.31	1.39	1502	19.8	0.47	1.38	1677	22.9	0.63	1.37	1846	26.2	0.81	1.34	2149	33.6	1.2	1.27	2441	42.4	1.65	1.20	2714	51.6	2.15	1.13				
1700	1380	18.9	0.35	1.33	1552	21.5	0.51	1.36	1719	24.4	0.69	1.34	1881	27.4	0.87	1.33	2176	34.7	1.27	1.27	2454	43	1.72	1.21	2722	51.8	2.23	1.15				
1800	1441	20.6	0.39	1.29	1605	23.4	0.57	1.30	1763	25.9	0.75	1.31	1918	28.9	0.94	1.30	2207	36	1.35	1.27	2471	43.8	1.8	1.22	2731	52.3	2.32	1.16				
1900	1502	22.4	0.44	1.24	1659	25.3	0.62	1.28	1810	27.6	0.81	1.29	1958	30.5	1.01	1.29	2241	37.4	1.43	1.26	2495	45	1.89	1.23	2743	52.9	2.41	1.18				
2000	1564	24.4	0.49	1.19	1715	27.2	0.69	1.23	1860	29.5	0.88	1.26	2001	32.3	1.09	1.26	2275	38.9	1.52	1.25	2524	46.4	1.99	1.23	2760	53.8	2.51	1.19				
2100	1627	26.3	0.55	1.14	1773	29.4	0.75	1.20	1911	31.6	0.96	1.22	2046	34.2	1.17	1.24	2310	40.5	1.62	1.24	2556	47.8	2.1	1.22	2783	55.1	2.62	1.19				
2200	1690	28.4	0.61	1.10	1831	31.5	0.82	1.16	1963	33.8	1.04	1.19	2093	36.2	1.26	1.21	2348	42.4	1.72	1.23	2590	49.5	2.21	1.22	2811	56.7	2.74	1.20				
2300	1753	30.5	0.68	1.06	1890	33.6	0.9	1.13	2018	36.1	1.12	1.17	2143	38.6	1.35	1.19	2387	44.5	1.83	1.21	2624	51.2	2.33	1.21	2842	58.4	2.87	1.19				
2400	1817	32.7	0.75	1.02	1950	35.8	0.98	1.10	2073	38.7	1.21	1.14	2194	41	1.45	1.17	2429	46.7	1.94	1.20	2659	53	2.46	1.20	2875	60.4	3.01	1.19				
2500	1881	34.9	0.83	0.98	2010	38.3	1.06	1.07	2130	41.3	1.31	1.11	2246	43.6	1.56	1.14	2473	49.1	2.06	1.18	2696	55.1	2.6	1.18	-	-	-	-				
2600	1946	37.3	0.92	0.94	2071	40.8	1.16	1.03	2187	44	1.41	1.09	2299	46.3	1.67	1.12	2519	51.6	2.19	1.16	2735	57.4	2.74	1.17	-	-	-	-				
2700	2011	39.9	1.01	0.91	2133	43.4	1.25	1.01	2246	46.7	1.51	1.07	2354	49.2	1.78	1.10	2567	54.3	2.32	1.14	2775	59.8	2.88	1.16	-	-	-	-				
2800	2076	42.4	1.1	0.89	2195	46.1	1.36	0.98	2305	49.4	1.63	1.04	2410	52.3	1.9	1.08	2616	57.1	2.46	1.12	2817	62.5	3.04	1.15	-	-	-	-				
2900	2141	45.2	1.21	0.86	2257	49	1.47	0.95	2364	52.4	1.75	1.01	2467	55.7	2.03	1.05	2666	60	2.61	1.10	2861	65.4	3.2	1.13	-	-	-	-				
3000	2207	48.1	1.32	0.83	2320	52.1	1.59	0.93	2425	55.5	1.87	0.99	2524	59	2.16	1.04	2718	63.1	2.76	1.09	-	-	-	-	-	-	-	-				
3100	2273	51.1	1.44	0.81	2383	55.3	1.71	0.91	2485	58.8	2	0.97	2583	62	2.31	1.01	2771	66.4	2.92	1.07	-	-	-	-	-	-	-	-				
3200	2339	54.3	1.56	0.79	2446	58.6	1.85	0.88	2547	62	2.14	0.95	2642	65.1	2.45	0.99	2825	69.9	3.09	1.05	-	-	-	-	-	-	-	-				
3300	2405	57.7	1.69	0.77	2510	62	1.99	0.86	2608	65.2	2.29	0.93	2701	68.3	2.61	0.97	2879	73.8	3.26	1.04	-	-	-	-	-	-	-	-				
3400	2471	61.3	1.83	0.75	2574	65.3	2.14	0.84	2670	68.5	2.45	0.91	2761	71.5	2.77	0.96	-	-	-	-	-	-	-	-	-	-	-	-				
3500	2538	64.7	1.98	0.73	2638	68.6	2.29	0.82	2733	71.8	2.61	0.89	2822	75.4	2.94	0.94	-	-	-	-	-	-	-	-	-	-	-	-				
3600	2604	68.1	2.14	0.71	2702	71.9	2.46	0.80	2795	75.6	2.78	0.87	2882	79.2	3.12	0.92	-	-	-	-	-	-	-	-	-	-	-	-				
3700	2671	71.5	2.3	0.70	2767	75.6	2.63	0.78	2858	79.5	2.96	0.85	-	-	-	-	-	-	-	-	-	-	-	-	-	-	-					
3800	2738	75.3	2.48	0.68	2832	79.4	2.81	0.77	-	-	-	-	-	-	-	-	-	-	-	-	-	-	-	-	-	-	-					
3900	2805	79	2.66	0.66	2897	83.3	3	0.75	-	-	-	-	-	-	-	-	-	-	-	-	-	-	-	-	-	-	-					
4000	2872	83	2.85	0.65	-	-	-	-	-	-	-	-	-	-	-	-	-	-	-	-	-	-	-	-	-	-	-	-				

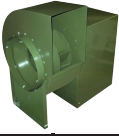
Grey shaded areas meet or exceed the FEI standards for efficiency in California.  
 Performance certified is for installation type B: free inlet, ducted outlet. Power rating (BHP) does not include transmission losses. Performance ratings do not include the effect of appurtenances (accessories).  
 FEI calculated using AMCA 210 data and default motor efficiency without the motor.  
 For complete fan performance please use Delair or consult factory. [www.canarm.com/delair](http://www.canarm.com/delair)



Canarm certifies that the BI Series shown herein are licensed to bear the AMCA Seal. The ratings shown are based on tests and procedures performed in accordance with AMCA Publications 211 and comply with the requirements of the AMCA Certified Ratings Programme.

The AMCA certified ratings seal applies to air performance only. The BI Series shown herein are not approved by AMCA for FEI and FEP ratings.





# BI-16

Max RPM: 2350    Max HP: 7-1/2    Shaft size: 1-3/16"



CFM	1/2" SP				1" SP				1-1/2" SP				2" SP				3" SP				4" SP				5" SP						
	RPM	Sone	HP	FEI	RPM	Sone	HP	FEI	RPM	Sone	HP	FEI	RPM	Sone	HP	FEI	RPM	Sone	HP	FEI	RPM	Sone	HP	FEI	RPM	Sone	HP	FEI	RPM	Sone	HP
200	693	5.3	0.06	1.36	984	10.3	0.15	1.00	1207	15.5	0.27	0.80	1395	20.6	0.4	0.70	1711	31	0.71	0.57	1978	40.5	1.07	0.49	2213	49.6	1.47	0.44			
300	691	5.2	0.07	1.43	980	10.2	0.17	1.06	1203	15.3	0.29	0.89	1391	20.3	0.43	0.77	1706	30.6	0.76	0.63	1973	40.1	1.14	0.55	2207	49	1.56	0.49			
400	691	5.2	0.07	1.62	978	10.1	0.18	1.16	1200	15.1	0.31	0.96	1387	20.1	0.47	0.82	1702	30.2	0.81	0.69	1968	39.7	1.21	0.60	2202	48.6	1.65	0.54			
500	693	5.2	0.08	1.66	977	10	0.2	1.20	1198	15	0.34	1.00	1385	19.9	0.5	0.88	1699	30	0.86	0.74	1964	39.4	1.27	0.65	2198	48.2	1.73	0.59			
600	695	5.3	0.09	1.69	978	10.1	0.21	1.28	1197	14.9	0.36	1.06	1383	19.8	0.53	0.93	1696	29.7	0.91	0.78	1961	39.2	1.34	0.70	2195	47.9	1.81	0.63			
700	699	5.5	0.1	1.72	980	10.1	0.22	1.36	1197	14.9	0.38	1.12	1382	19.7	0.55	1.00	1694	29.6	0.95	0.83	1958	38.9	1.4	0.74	2192	47.6	1.89	0.67			
800	704	5.6	0.11	1.75	982	10.2	0.24	1.38	1199	15	0.4	1.17	1383	19.8	0.58	1.04	1693	29.5	0.99	0.88	1957	38.8	1.46	0.78	2189	47.4	1.97	0.71			
900	710	5.8	0.11	1.89	985	10.4	0.25	1.44	1201	15.1	0.41	1.24	1384	19.9	0.6	1.09	1693	29.5	1.03	0.92	1955	38.7	1.51	0.82	2188	47.2	2.04	0.75			
1000	721	6.2	0.12	1.90	989	10.6	0.27	1.46	1203	15.3	0.44	1.26	1386	20	0.63	1.13	1694	29.5	1.07	0.96	1955	38.6	1.57	0.85	2186	47.1	2.11	0.78			
1100	737	6.7	0.14	1.82	994	10.8	0.29	1.47	1207	15.5	0.47	1.27	1388	20.2	0.66	1.16	1695	29.6	1.11	1.00	1955	38.7	1.62	0.89	2186	47.1	2.18	0.82			
1200	756	7.2	0.15	1.84	999	11.1	0.31	1.49	1211	15.7	0.49	1.31	1391	20.3	0.69	1.19	1697	29.8	1.14	1.04	1956	38.8	1.67	0.93	2186	47.1	2.25	0.85			
1300	775	7.8	0.17	1.78	1006	11.5	0.33	1.50	1215	16	0.52	1.33	1395	20.6	0.73	1.21	1699	30	1.19	1.06	1958	38.9	1.72	0.96	2187	47.1	2.31	0.88			
1400	797	8.4	0.18	1.80	1018	12.2	0.35	1.52	1220	16.3	0.55	1.34	1399	20.9	0.77	1.22	1702	30.2	1.23	1.09	1960	39	1.77	0.99	2188	47.2	2.37	0.91			
1500	820	9.1	0.2	1.76	1033	12.9	0.37	1.53	1225	16.6	0.58	1.35	1404	21.2	0.81	1.23	1705	30.5	1.29	1.11	1962	39.2	1.82	1.02	2190	47.4	2.43	0.94			
1600	845	9.8	0.22	1.72	1051	13.6	0.4	1.51	1233	17.1	0.6	1.38	1408	21.5	0.84	1.26	1708	30.8	1.34	1.13	1965	39.5	1.89	1.04	2192	47.6	2.5	0.97			
1700	871	10.6	0.24	1.69	1070	14.4	0.43	1.49	1244	17.8	0.64	1.37	1413	21.8	0.88	1.27	1713	31.1	1.4	1.14	1968	39.7	1.96	1.06	2194	47.8	2.57	0.99			
1800	899	11.6	0.27	1.62	1089	15.1	0.46	1.48	1259	18.6	0.67	1.39	1420	22.3	0.91	1.30	1717	31.5	1.46	1.15	1971	40	2.03	1.07	2197	48.1	2.65	1.01			
1900	928	12.6	0.29	1.60	1109	15.9	0.49	1.47	1276	19.3	0.71	1.38	1429	22.9	0.95	1.31	1722	31.9	1.52	1.16	1975	40.3	2.11	1.09	2200	48.4	2.73	1.03			
2000	958	13.6	0.32	1.55	1131	16.7	0.53	1.44	1295	20.2	0.75	1.38	1442	23.9	1	1.30	1726	32.2	1.57	1.18	1979	40.7	2.19	1.10	2203	48.7	2.83	1.04			
2200	1020	15.7	0.38	1.47	1179	18.5	0.6	1.41	1333	21.9	0.84	1.36	1475	25.6	1.1	1.30	1739	33.3	1.67	1.21	1989	41.5	2.34	1.12	2211	49.4	3.02	1.07			
2400	1084	17.9	0.45	1.39	1231	20.5	0.69	1.36	1374	23.8	0.94	1.33	1512	27.5	1.21	1.30	1759	35.1	1.8	1.22	1998	42.3	2.48	1.15	2221	50.4	3.21	1.09			
2600	1149	20.2	0.54	1.29	1287	22.8	0.78	1.32	1420	26	1.05	1.30	1551	29.5	1.34	1.27	1790	37.5	1.94	1.23	2013	43.6	2.62	1.17	2229	51.2	3.39	1.11			
2800	1216	22.7	0.63	1.23	1346	25.3	0.89	1.27	1471	28.4	1.17	1.27	1594	31.9	1.47	1.26	1826	39.7	2.11	1.22	2036	45.7	2.79	1.19	2242	52.4	3.56	1.14			
3000	1284	25.4	0.74	1.15	1407	28.1	1.01	1.22	1525	31.2	1.3	1.24	1640	34.6	1.62	1.23	1863	41.8	2.28	1.22	2067	48.1	2.99	1.19	2259	54.2	3.76	1.15			
3200	1353	28.4	0.86	1.09	1470	31.1	1.14	1.17	1581	34.2	1.45	1.20	1690	37.7	1.77	1.21	1903	44.2	2.47	1.20	2102	50.5	3.21	1.18	2286	57	3.99	1.16			
3400	1422	31.7	0.99	1.04	1535	34.5	1.29	1.12	1640	37.5	1.61	1.17	1743	40.9	1.95	1.18	1945	46.9	2.67	1.19	2140	53.1	3.44	1.18	2319	59.6	4.24	1.16			
3500	1457	33.4	1.06	1.01	1567	36.2	1.37	1.10	1670	39.3	1.69	1.15	1771	42.7	2.04	1.17	1968	48.3	2.77	1.18	2159	54.5	3.56	1.17	2336	60.9	4.38	1.16			
3600	1492	35.1	1.14	0.98	1600	38.1	1.45	1.08	1701	41.1	1.78	1.13	1799	44.5	2.13	1.16	1991	49.8	2.88	1.17	2178	55.9	3.68	1.17	-	-	-	-			
3800	1562	38.5	1.3	0.94	1667	42.1	1.63	1.04	1763	45.1	1.98	1.09	1857	47.8	2.34	1.13	2039	53.2	3.11	1.16	2219	58.9	3.94	1.16	-	-	-	-			
3900	1598	40.3	1.39	0.91	1700	44.1	1.73	1.01	1795	47.2	2.08	1.08	1886	49.5	2.44	1.12	2065	54.9	3.23	1.15	2241	60.5	4.07	1.15	-	-	-	-			
4000	1633	42.2	1.48	0.89	1734	46.3	1.83	0.99	1827	49.1	2.19	1.06	1916	51.3	2.56	1.10	2091	56.6	3.36	1.14	2263	62.1	4.21	1.15	-	-	-	-			
4200	1704	46.3	1.67	0.86	1802	50.9	2.04	0.96	1891	53	2.41	1.03	1977	55.2	2.8	1.07	2145	60.2	3.62	1.12	2309	65.7	4.5	1.13	-	-	-	-			
4300	1740	48.4	1.77	0.84	1836	53	2.15	0.94	1924	55	2.53	1.01	2008	57.2	2.93	1.05	2173	62.1	3.76	1.11	2333	67.6	4.66	1.12	-	-	-	-			
4400	1776	50.6	1.88	0.82	1870	55.1	2.27	0.92	1957	57.1	2.66	0.99	2040	59.2	3.06	1.04	2201	64.1	3.9	1.10	-	-	-	-	-	-	-	-			
4600	1848	54.8	2.11	0.79	1939	59.3	2.52	0.89	2023	61.3	2.93	0.96	2103	63.4	3.34	1.01	2258	68.1	4.21	1.07	-	-	-	-	-	-	-	-			
4700	1884	56.7	2.24	0.77	1974	61.5	2.65	0.87	2057	63.5	3.07	0.94	2135	65.6	3.49	1.00	2287	70.2	4.37	1.06	-	-	-	-	-	-	-	-			
4800	1920	58.7	2.36	0.76	2008	63.8	2.79	0.86	2090	65.8	3.21	0.93	2168	67.8	3.64	0.98	2317	72.4	4.53	1.05	-	-	-	-	-	-	-	-			
4900	1957	60.7	2.5	0.75	2043	66	2.93	0.84	2124	68.1	3.36	0.91	2200	70.1	3.8	0.97	2347	74.7	4.7	1.04	-	-	-	-	-	-	-	-			
5000	1993	62.8	2.64	0.73	2078	68	3.08	0.83	2158	70.3	3.52	0.90	2233	72.4	3.96	0.95	-	-	-	-	-	-	-	-	-	-	-	-			
5300	2102	69.2	3.08	0.70	2184	74.6	3.55	0.79	2260	77.8	4.02	0.86	2332	79.8	4.48	0.92	-	-	-	-	-	-	-	-	-	-	-	-			
5500	2176	73.8	3.41	0.68	2254	79.2	3.89	0.77	2329	82.9	4.38	0.83	-	-	-	-	-	-	-	-	-	-	-	-	-	-	-	-			
5700	2249	78.5	3.75	0.66	2325	83.8	4.26	0.74	-	-	-	-	-	-	-	-	-	-	-	-	-	-	-	-	-	-	-	-			
5900	2322	83.3	4.13	0.64	-	-	-	-	-	-	-	-	-	-	-	-	-	-	-	-	-	-	-	-	-	-	-	-	-		

Gray shaded areas meet or exceed the FEI standards for efficiency in California.

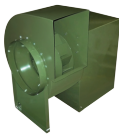
Performance certified is for installation type B: free inlet, ducted outlet. Power rating (BHP) does not include transmission losses. Performance ratings do not include the effect of appurtenances (accessories).

FEI calculated using AMCA 210 data and default motor efficiency without the motor. For complete fan performance please use Delair or consult factory. [www.canarm.com/delair](http://www.canarm.com/delair)



Canarm certifies that the BI Series shown herein are licensed to bear the AMCA Seal. The ratings shown are based on tests and procedures performed in accordance with AMCA Publications 211 and comply with the requirements of the AMCA Certified Ratings Programme.

The AMCA certified ratings seal applies to air performance only. The BI Series shown herein are not approved by AMCA for FEI and FEP ratings.



# BI-18

Max RPM: 1900 Max HP: 7-1/2 Shaft size: 1-3/16"



CFM	1/2" SP				1" SP				1-1/2" SP				2" SP				3" SP				4" SP				5" SP							
	RPM	Sone	HP	FEI	RPM	Sone	HP	FEI	RPM	Sone	HP	FEI	RPM	Sone	HP	FEI	RPM	Sone	HP	FEI	RPM	Sone	HP	FEI	RPM	Sone	HP	FEI	RPM	Sone	HP	FEI
500	625	5.5	0.09	1.53	885	10.6	0.23	1.07	1175	18.9	0.48	0.75	1335	24.3	0.68	0.67	1609	34.8	1.13	0.58	1844	45.1	1.64	0.52	-	-	-	-	-	-	-	-
600	626	5.5	0.1	1.57	884	10.6	0.24	1.15	1172	18.8	0.51	0.79	1332	24	0.71	0.72	1605	34.7	1.18	0.62	1839	44.9	1.7	0.56	-	-	-	-	-	-	-	-
700	628	5.6	0.1	1.71	884	10.6	0.25	1.22	1170	18.8	0.53	0.84	1329	23.9	0.74	0.77	1601	34.4	1.23	0.66	1835	44.7	1.77	0.60	-	-	-	-	-	-	-	-
800	630	5.6	0.11	1.74	885	10.6	0.26	1.29	1169	18.7	0.55	0.89	1327	23.9	0.77	0.81	1598	34.3	1.27	0.70	1831	44.3	1.83	0.63	-	-	-	-	-	-	-	-
900	634	5.6	0.12	1.76	886	10.6	0.28	1.31	1169	18.7	0.58	0.92	1326	23.8	0.81	0.84	1596	34.2	1.32	0.73	1828	44.2	1.89	0.67	-	-	-	-	-	-	-	-
1000	637	5.7	0.13	1.78	888	10.7	0.29	1.37	1170	18.7	0.6	0.96	1325	23.8	0.83	0.88	1594	34.1	1.36	0.77	1826	44.1	1.95	0.70	-	-	-	-	-	-	-	-
1100	641	5.8	0.14	1.81	891	10.7	0.31	1.39	1171	18.8	0.62	1.00	1326	23.8	0.86	0.92	1593	34.1	1.41	0.80	1824	44	2.01	0.73	-	-	-	-	-	-	-	-
1200	649	5.9	0.15	1.82	894	10.8	0.33	1.40	1173	18.8	0.64	1.04	1327	23.9	0.89	0.95	1593	34.1	1.45	0.83	1822	43.9	2.07	0.76	-	-	-	-	-	-	-	-
1300	661	6.1	0.16	1.84	897	10.9	0.35	1.42	1175	18.9	0.67	1.06	1329	23.9	0.92	0.98	1594	34.1	1.48	0.87	1822	43.9	2.13	0.79	-	-	-	-	-	-	-	-
1400	674	6.3	0.18	1.78	900	11	0.37	1.43	1177	19.1	0.7	1.08	1331	24	0.95	1.01	1595	34.1	1.52	0.90	1822	43.9	2.18	0.81	-	-	-	-	-	-	-	-
1500	688	6.6	0.19	1.80	904	11.1	0.38	1.48	1180	19.1	0.73	1.10	1333	24.1	0.99	1.03	1596	34.2	1.57	0.92	1822	43.9	2.23	0.84	-	-	-	-	-	-	-	-
1600	702	6.9	0.21	1.75	910	11.2	0.4	1.49	1183	19.2	0.77	1.10	1335	24.3	1.03	1.04	1598	34.2	1.61	0.95	1823	44	2.28	0.87	-	-	-	-	-	-	-	-
1700	718	7.3	0.22	1.78	919	11.4	0.42	1.51	1186	19.3	0.8	1.12	1338	24.4	1.07	1.06	1600	34.3	1.66	0.97	1825	44.1	2.33	0.90	-	-	-	-	-	-	-	-
1800	735	7.8	0.24	1.74	930	11.7	0.45	1.49	1190	19.4	0.83	1.14	1341	24.5	1.11	1.07	1602	34.4	1.71	0.99	1827	44.1	2.39	0.92	-	-	-	-	-	-	-	-
1900	753	8.3	0.26	1.71	942	12.1	0.47	1.50	1193	19.5	0.86	1.15	1344	24.6	1.16	1.08	1604	34.6	1.77	1.00	1829	44.2	2.45	0.94	-	-	-	-	-	-	-	-
2000	772	8.8	0.29	1.63	956	12.5	0.5	1.49	1197	19.6	0.89	1.17	1348	24.7	1.2	1.09	1607	34.7	1.83	1.02	1831	44.3	2.51	0.96	-	-	-	-	-	-	-	-
2100	792	9.4	0.31	1.62	970	12.9	0.53	1.48	1203	19.8	0.93	1.17	1351	24.7	1.24	1.11	1610	34.8	1.89	1.03	1833	44.6	2.59	0.97	-	-	-	-	-	-	-	-
2200	812	10	0.33	1.60	984	13.3	0.56	1.47	1211	20.1	0.96	1.19	1355	24.9	1.28	1.12	1613	34.9	1.95	1.04	1835	44.7	2.67	0.98	-	-	-	-	-	-	-	-
2300	834	10.8	0.36	1.55	999	13.9	0.6	1.44	1221	20.4	1	1.19	1359	25	1.32	1.13	1616	35	2.02	1.05	1838	44.8	2.75	0.99	-	-	-	-	-	-	-	-
2400	855	11.5	0.39	1.51	1015	14.5	0.63	1.43	1233	20.8	1.05	1.18	1366	25.3	1.36	1.15	1620	35.2	2.08	1.06	1841	45	2.83	1.01	-	-	-	-	-	-	-	-
2500	878	12.3	0.42	1.48	1032	15.2	0.67	1.41	1245	21.3	1.09	1.19	1373	25.5	1.41	1.15	1623	35.3	2.14	1.07	1844	45.1	2.91	1.02	-	-	-	-	-	-	-	-
2600	901	13.2	0.45	1.45	1049	15.9	0.71	1.39	1258	21.7	1.14	1.18	1384	25.9	1.46	1.16	1626	35.4	2.19	1.09	1847	45.2	2.99	1.03	-	-	-	-	-	-	-	-
2800	947	14.9	0.51	1.40	1086	17.5	0.8	1.35	1286	22.6	1.25	1.17	1407	26.7	1.57	1.16	1636	35.8	2.31	1.11	1854	45.5	3.15	1.05	-	-	-	-	-	-	-	-
3000	995	16.9	0.59	1.33	1126	19.3	0.89	1.31	1315	23.8	1.36	1.16	1434	27.7	1.7	1.15	1650	36.4	2.44	1.12	1861	45.8	3.3	1.07	-	-	-	-	-	-	-	-
3200	1044	18.9	0.67	1.28	1168	21.2	0.99	1.28	1347	25.4	1.48	1.14	1462	28.7	1.83	1.15	1671	37.3	2.59	1.13	1871	46.3	3.45	1.09	-	-	-	-	-	-	-	-
3400	1093	21	0.77	1.21	1211	23.2	1.1	1.24	1381	27	1.62	1.12	1491	30.2	1.98	1.13	1696	38.4	2.76	1.13	1884	47	3.62	1.10	-	-	-	-	-	-	-	-
3500	1118	22.1	0.82	1.18	1233	24.3	1.16	1.22	1399	28	1.69	1.11	1507	31.1	2.06	1.12	1709	38.9	2.85	1.13	1894	47.5	3.71	1.11	-	-	-	-	-	-	-	-
3600	1143	23.2	0.87	1.16	1256	25.4	1.22	1.20	1417	29	1.76	1.10	1523	32.1	2.14	1.12	1723	39.5	2.94	1.12	-	-	-	-	-	-	-	-	-	-	-	
3800	1194	25.6	0.98	1.12	1302	27.7	1.35	1.16	1456	31.2	1.92	1.07	1556	34.1	2.31	1.10	1751	40.8	3.14	1.12	-	-	-	-	-	-	-	-	-	-	-	
4000	1245	28	1.1	1.07	1349	30	1.48	1.13	1496	33.6	2.08	1.05	1592	36.3	2.49	1.08	1780	42.3	3.35	1.11	-	-	-	-	-	-	-	-	-	-	-	-
4200	1296	30.4	1.24	1.02	1397	32.7	1.63	1.10	1538	36.1	2.26	1.03	1630	38.7	2.68	1.07	1810	44.3	3.57	1.10	-	-	-	-	-	-	-	-	-	-	-	-
4300	1322	31.7	1.31	1.01	1421	34	1.71	1.08	1559	37.5	2.35	1.02	1649	39.9	2.78	1.06	1826	45.4	3.68	1.09	-	-	-	-	-	-	-	-	-	-	-	-
4400	1348	33.2	1.38	0.99	1445	35.4	1.8	1.06	1581	38.9	2.45	1.01	1669	41.2	2.89	1.05	1842	46.6	3.8	1.08	-	-	-	-	-	-	-	-	-	-	-	-
4500	1374	34.6	1.46	0.97	1470	36.7	1.88	1.05	1603	40.3	2.55	1.00	1690	42.5	3	1.03	1859	47.8	3.93	1.08	-	-	-	-	-	-	-	-	-	-	-	-
4600	1400	36	1.54	0.95	1494	38.2	1.97	1.03	1625	41.7	2.65	0.99	1710	43.9	3.11	1.03	1876	49.1	4.05	1.07	-	-	-	-	-	-	-	-	-	-	-	-
4700	1426	37.4	1.63	0.93	1519	39.7	2.06	1.02	1648	43.1	2.75	0.98	1731	45.3	3.22	1.02	1894	50.4	4.18	1.06	-	-	-	-	-	-	-	-	-	-	-	-
4800	1452	38.9	1.72	0.91	1544	41.3	2.16	1.00	1670	44.7	2.86	0.97	1752	46.7	3.34	1.01	-	-	-	-	-	-	-	-	-	-	-	-	-	-	-	-
4900	1478	40.4	1.81	0.90	1569	42.9	2.26	0.98	1693	46.2	2.97	0.96	1774	48.3	3.46	1.00	-	-	-	-	-	-	-	-	-	-	-	-	-	-	-	-
5000	1504	42	1.9	0.88	1594	44.5	2.36	0.97	1717	47.8	3.08	0.95	1795	49.8	3.58	0.99	-	-	-	-	-	-	-	-	-	-	-	-	-	-	-	-
5400	1610	48.8	2.31	0.83	1695	51	2.8	0.92	1811	54.5	3.58	0.91	1884	56.6	4.11	0.95	-	-	-	-	-	-	-	-	-	-	-	-	-	-	-	-
5700	1690	54	2.67	0.78	1772	56.3	3.18	0.88	1883	59.7	3.98	0.88	-	-	-	-	-	-	-	-	-	-	-	-	-	-	-	-	-	-	-	-
6000	1770	59.5	3.05	0.75	1849	61.8	3.59	0.84	-	-	-	-	-	-	-	-	-	-	-	-	-	-	-	-	-	-	-	-	-	-	-	-
6200	1824	63.4	3.33	0.73	1900	65.8	3.88	0.82	-	-	-	-	-	-	-	-	-	-	-	-	-	-	-	-	-	-	-	-	-	-	-	-
6400	1878	67.4	3.63	0.71	-	-	-	-	-	-	-	-	-	-	-	-	-	-	-	-	-	-	-	-	-	-	-	-	-	-	-	-

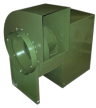
Grey shaded areas meet or exceed the FEI standards for efficiency in California. Performance certified is for installation type B: free inlet, ducted outlet. Power rating (BHP) does not include transmission losses. Performance ratings do not include the effect of appurtenances (accessories).

FEI calculated using AMCA 210 data and default motor efficiency without the motor. For complete fan performance please use Delair or consult factory. [www.canarm.com/delair](http://www.canarm.com/delair)



Canarm certifies that the BI Series shown herein are licensed to bear the AMCA Seal. The ratings shown are based on tests and procedures performed in accordance with AMCA Publications 211 and comply with the requirements of the AMCA Certified Ratings Programme.

The AMCA certified ratings seal applies to air performance only. The BI Series shown herein are not approved by AMCA for FEI and FEP ratings.



# BI-20

Max RPM: 1900 Max HP: 7-1/2 Shaft size: 1-3/16"



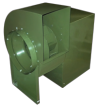
CFM	1/2" SP				1" SP				1-1/2" SP				2" SP				3" SP				4" SP				5" SP						
	RPM	Sone	HP	FEI	RPM	Sone	HP	FEI	RPM	Sone	HP	FEI	RPM	Sone	HP	FEI	RPM	Sone	HP	FEI	RPM	Sone	HP	FEI	RPM	Sone	HP	FEI	RPM	Sone	HP
500	573	6	0.09	1.53	811	10.5	0.23	1.07	952	14	0.36	0.96	1075	17.5	0.5	0.88	1351	25.2	0.93	0.69	1580	32.3	1.43	0.59	1780	40.4	2	0.52			
600	573	6	0.1	1.57	810	10.4	0.25	1.11	951	13.9	0.38	1.01	1074	17.5	0.52	0.95	1349	25.2	0.97	0.74	1577	32.2	1.49	0.63	1777	40.3	2.07	0.56			
700	575	6	0.11	1.60	810	10.4	0.26	1.18	950	13.9	0.4	1.07	1072	17.5	0.55	0.99	1347	25.2	1.01	0.79	1575	32.1	1.54	0.68	1775	40.2	2.14	0.60			
800	575	6	0.12	1.63	811	10.5	0.28	1.21	950	13.9	0.42	1.12	1072	17.5	0.57	1.05	1345	25.2	1.05	0.83	1573	32.1	1.6	0.71	1772	40.1	2.21	0.64			
900	575	6	0.12	1.76	812	10.5	0.29	1.27	950	13.9	0.44	1.16	1071	17.5	0.6	1.09	1344	25.2	1.09	0.87	1571	32	1.65	0.75	1770	40	2.28	0.67			
1000	576	6	0.13	1.78	813	10.5	0.31	1.29	951	14	0.46	1.20	1072	17.5	0.63	1.12	1343	25.2	1.13	0.91	1570	32	1.71	0.79	1769	39.9	2.35	0.71			
1100	579	6	0.14	1.79	814	10.5	0.32	1.35	953	14	0.48	1.24	1073	17.5	0.65	1.17	1343	25.2	1.17	0.95	1569	31.9	1.76	0.82	1767	39.8	2.41	0.74			
1200	583	6	0.15	1.81	814	10.5	0.34	1.36	954	14	0.5	1.28	1074	17.5	0.68	1.20	1344	25.2	1.21	0.98	1569	31.9	1.82	0.85	1766	39.8	2.48	0.77			
1300	589	6	0.16	1.83	814	10.5	0.36	1.38	954	14	0.53	1.29	1075	17.5	0.71	1.23	1344	25.2	1.25	1.01	1568	31.9	1.87	0.88	1766	39.8	2.55	0.80			
1400	595	6.1	0.17	1.84	815	10.5	0.37	1.43	954	14	0.55	1.32	1077	17.5	0.74	1.25	1346	25.2	1.29	1.04	1569	31.9	1.93	0.91	1765	39.7	2.62	0.83			
1500	600	6.2	0.18	1.86	817	10.5	0.39	1.44	955	14	0.57	1.35	1077	17.5	0.76	1.29	1347	25.2	1.34	1.06	1570	32	1.98	0.94	1765	39.7	2.69	0.85			
1600	607	6.3	0.19	1.87	821	10.6	0.41	1.45	955	14	0.59	1.38	1077	17.5	0.79	1.31	1348	25.2	1.38	1.09	1571	32	2.04	0.96	1766	39.8	2.77	0.87			
1700	614	6.5	0.21	1.82	825	10.8	0.42	1.49	956	14.1	0.62	1.39	1077	17.5	0.82	1.34	1349	25.2	1.42	1.11	1572	32	2.1	0.98	1767	39.8	2.84	0.90			
1800	623	6.6	0.22	1.84	830	10.9	0.44	1.50	960	14.2	0.64	1.42	1078	17.5	0.85	1.36	1350	25.2	1.47	1.13	1573	32.1	2.16	1.01	1768	39.9	2.91	0.92			
1900	633	6.8	0.23	1.85	836	11.1	0.46	1.51	964	14.3	0.66	1.44	1079	17.5	0.88	1.37	1350	25.2	1.51	1.16	1575	32.1	2.22	1.03	1769	39.9	2.98	0.94			
2000	645	7.1	0.25	1.81	842	11.3	0.48	1.52	968	14.4	0.69	1.45	1082	17.6	0.91	1.39	1350	25.2	1.56	1.17	1576	32.2	2.28	1.04	1770	40	3.06	0.96			
2200	670	7.5	0.28	1.79	854	11.6	0.53	1.52	979	14.7	0.74	1.48	1090	17.8	0.97	1.43	1351	25.2	1.65	1.21	1576	32.2	2.4	1.08	1773	40.1	3.21	1.00			
2400	698	8.1	0.32	1.73	868	12	0.58	1.51	991	15.1	0.79	1.50	1100	18.2	1.03	1.46	1353	25.3	1.74	1.24	1576	32.2	2.52	1.11	1774	40.1	3.36	1.03			
2600	728	8.7	0.36	1.69	887	12.5	0.63	1.51	1003	15.5	0.86	1.50	1111	18.6	1.1	1.48	1359	25.5	1.83	1.27	1577	32.2	2.65	1.14	1774	40.1	3.52	1.06			
2800	760	9.4	0.41	1.63	909	13.1	0.69	1.50	1017	16.1	0.93	1.49	1123	19	1.18	1.48	1368	25.7	1.93	1.29	1580	32.3	2.77	1.17	1775	40.2	3.67	1.09			
3000	793	10.3	0.46	1.58	933	13.7	0.76	1.47	1035	16.7	1	1.49	1136	19.5	1.26	1.49	1378	26	2.03	1.31	1586	32.6	2.9	1.19	1776	40.2	3.83	1.11			
3200	826	11.4	0.52	1.52	960	14.4	0.83	1.45	1056	17.3	1.08	1.48	1151	20.1	1.35	1.48	1390	26.4	2.13	1.33	1594	32.9	3.02	1.22	1779	40.4	3.99	1.13			
3400	861	12.5	0.58	1.47	988	15	0.9	1.43	1080	17.9	1.17	1.46	1169	20.7	1.45	1.47	1402	27	2.25	1.34	1604	33.4	3.16	1.24	1786	40.7	4.15	1.15			
3600	897	13.6	0.65	1.42	1018	15.8	0.99	1.39	1105	18.6	1.26	1.45	1190	21.2	1.55	1.47	1414	27.4	2.38	1.34	1615	33.9	3.3	1.25	1794	41.1	4.31	1.17			
3800	933	14.8	0.73	1.36	1049	16.7	1.08	1.36	1132	19.3	1.36	1.42	1214	21.7	1.66	1.45	1427	28	2.51	1.35	1627	34.4	3.44	1.27	1804	41.6	4.48	1.19			
4000	969	16.1	0.81	1.32	1081	17.9	1.18	1.33	1161	20.1	1.46	1.41	1239	22.3	1.77	1.44	1442	28.6	2.66	1.34	1639	35.1	3.6	1.28	1815	42.2	4.65	1.21			
4200	1006	17.4	0.9	1.27	1114	19.1	1.28	1.30	1191	20.8	1.58	1.38	1266	23	1.89	1.43	1460	29.3	2.8	1.34	1651	35.6	3.78	1.28	1826	42.8	4.84	1.22			
4400	1044	18.8	1	1.22	1148	20.4	1.39	1.27	1222	21.5	1.7	1.35	1293	23.7	2.02	1.41	1480	29.8	2.96	1.34	1664	36.3	3.96	1.28	1839	43.5	5.03	1.23			
4600	1081	20.1	1.1	1.18	1182	21.7	1.51	1.24	1253	22.6	1.83	1.33	1323	24.5	2.16	1.39	1502	30.5	3.12	1.33	1678	37	4.16	1.28	1851	44.2	5.24	1.24			
4800	1119	21.6	1.22	1.14	1217	22.9	1.64	1.21	1286	23.8	1.97	1.30	1353	25.3	2.31	1.36	1526	31.2	3.29	1.32	1695	37.9	4.36	1.28	1863	44.8	5.47	1.24			
5000	1157	23.1	1.34	1.10	1252	24.1	1.78	1.17	1319	25.1	2.12	1.27	1384	26.2	2.47	1.34	1551	31.9	3.47	1.31	1714	38.6	4.57	1.27	1876	45.6	5.71	1.24			
5300	1215	24.9	1.54	1.05	1306	26.1	2	1.13	1370	27.1	2.36	1.23	1432	28.1	2.73	1.30	1591	33.2	3.76	1.30	1746	39.8	4.89	1.27	1899	46.9	6.08	1.24			
5500	1254	26	1.69	1.01	1342	27.5	2.16	1.10	1404	28.5	2.53	1.21	1465	29.5	2.91	1.28	1619	34.3	3.97	1.28	1769	40.7	5.12	1.26	-	-	-	-			
5600	1273	26.7	1.77	1.00	1360	28.3	2.24	1.09	1422	29.2	2.62	1.19	1481	30.1	3.01	1.26	1634	34.8	4.08	1.27	1782	41.2	5.24	1.26	-	-	-	-			
6000	1351	29.3	2.1	0.94	1434	31.2	2.6	1.04	1493	32.1	3	1.14	1549	33	3.41	1.22	1693	37.1	4.54	1.24	1833	43.4	5.74	1.24	-	-	-	-			
6300	1411	31.4	2.38	0.90	1491	33.6	2.9	1.00	1547	34.5	3.31	1.11	1601	35.6	3.74	1.19	1740	39	4.91	1.22	1874	45.2	6.14	1.23	-	-	-	-			
6400	1431	32.1	2.48	0.89	1509	34.4	3	0.99	1565	35.4	3.42	1.10	1619	36.5	3.85	1.18	1756	39.8	5.04	1.21	1888	45.9	6.29	1.22	-	-	-	-			
6500	1450	32.9	2.58	0.88	1528	35.3	3.11	0.98	1583	36.2	3.53	1.09	1636	37.4	3.97	1.16	1772	40.7	5.18	1.20	-	-	-	-	-	-	-	-			
7000	1550	36.9	3.13	0.82	1624	39.8	3.7	0.92	1675	40.8	4.15	1.03	1726	42	4.61	1.11	1853	45.4	5.89	1.16	-	-	-	-	-	-	-	-			
7200	1590	38.6	3.37	0.80	1662	41.6	3.96	0.90	1713	42.8	4.41	1.01	1762	44.1	4.88	1.09	1887	47.5	6.2	1.14	-	-	-	-	-	-	-	-			
7300	1610	39.4	3.5	0.79	1681	42.6	4.09	0.89	1732	43.9	4.55	1.00	1780	45.1	5.03	1.08	-	-	-	-	-	-	-	-	-	-	-	-	-		
7500	1651	41.1	3.76	0.78	1719	44.5	4.37	0.87	1769	46.1	4.84	0.98	1817	47.3	5.32	1.06	-	-	-	-	-	-	-	-	-	-	-	-	-		
7900	1732	45.1	4.32	0.74	1797	48.5	4.96	0.84	1845	50.6	5.45	0.94	1891	51.7	5.96	1.02	-	-	-	-	-	-	-	-	-	-	-	-	-		
8100	1772	47.2	4.63	0.73	1836	50.6	5.28	0.82	1883	52.9	5.78	0.92	-	-	-	-	-	-	-	-	-	-	-	-	-	-	-	-	-		
8400	1833	50.4	5.11	0.71	1895	53.8	5.79	0.80	-	-	-	-	-	-	-	-	-	-	-	-	-	-	-	-	-	-	-	-	-		
8700	1894	53.8	5.62	0.69	-	-	-	-	-	-	-	-	-	-	-	-	-	-	-	-	-	-	-	-	-	-	-	-	-		

Grey shaded areas meet or exceed the FEI standards for efficiency in California.  
 Performance certified is for installation type B: free inlet, ducted outlet. Power rating (BHP) does not include transmission losses. Performance ratings do not include the effect of appurtenances (accessories).

FEI calculated using AMCA 210 data and default motor efficiency without the motor.  
 For complete fan performance please use Delair or consult factory. [www.canarm.com/delair](http://www.canarm.com/delair)



Canarm certifies that the BI Series shown herein are licensed to bear the AMCA Seal. The ratings shown are based on tests and procedures performed in accordance with AMCA Publications 211 and comply with the requirements of the AMCA Certified Ratings



# BI-22

Max RPM: 1700 Max HP: 10 Shaft size: 1-3/16"



CFM	1/2" SP				1" SP				1-1/2" SP				2" SP				3" SP				4" SP				5" SP						
	RPM	Sone	HP	FEI	RPM	Sone	HP	FEI	RPM	Sone	HP	FEI	RPM	Sone	HP	FEI	RPM	Sone	HP	FEI	RPM	Sone	HP	FEI	RPM	Sone	HP	FEI	RPM	Sone	HP
800	516	5.3	0.13	1.53	728	9.7	0.31	1.11	964	15.8	0.66	0.76	1154	21.4	1.07	0.60	1368	28.1	1.7	0.54	1553	34.6	2.41	0.49	-	-	-	-			
900	517	5.3	0.14	1.56	728	9.7	0.33	1.14	963	15.7	0.69	0.79	1153	21.4	1.11	0.63	1367	28.1	1.75	0.57	1551	34.5	2.48	0.52	-	-	-	-			
1000	517	5.3	0.15	1.59	729	9.7	0.34	1.19	963	15.7	0.71	0.82	1152	21.4	1.15	0.66	1365	28	1.8	0.59	1550	34.5	2.54	0.55	-	-	-	-			
1100	517	5.3	0.15	1.70	730	9.7	0.36	1.22	963	15.7	0.74	0.85	1152	21.4	1.18	0.69	1364	28	1.86	0.62	1549	34.4	2.61	0.57	-	-	-	-			
1200	518	5.3	0.16	1.72	731	9.7	0.38	1.24	963	15.7	0.76	0.89	1151	21.3	1.22	0.71	1363	28	1.91	0.64	1547	34.4	2.67	0.60	-	-	-	-			
1300	519	5.4	0.17	1.73	732	9.8	0.39	1.28	964	15.7	0.79	0.91	1151	21.3	1.26	0.73	1363	27.9	1.96	0.67	1546	34.3	2.74	0.62	-	-	-	-			
1400	521	5.4	0.18	1.75	732	9.8	0.41	1.30	965	15.8	0.82	0.93	1151	21.3	1.29	0.76	1362	27.9	2.01	0.69	1546	34.3	2.8	0.64	-	-	-	-			
1500	525	5.5	0.19	1.77	732	9.8	0.42	1.34	966	15.8	0.85	0.95	1152	21.4	1.33	0.78	1362	27.9	2.06	0.71	1545	34.3	2.87	0.66	-	-	-	-			
1600	529	5.6	0.2	1.78	732	9.8	0.44	1.36	967	15.8	0.87	0.98	1153	21.4	1.37	0.80	1362	27.9	2.11	0.74	1545	34.3	2.94	0.68	-	-	-	-			
1700	533	5.7	0.21	1.80	732	9.8	0.46	1.37	968	15.8	0.9	1.00	1154	21.4	1.41	0.82	1363	27.9	2.17	0.75	1544	34.2	3	0.70	-	-	-	-			
1800	537	5.8	0.22	1.81	733	9.8	0.47	1.41	968	15.9	0.93	1.01	1155	21.4	1.45	0.83	1363	28	2.22	0.77	1544	34.2	3.07	0.72	-	-	-	-			
1900	542	5.8	0.23	1.83	735	9.9	0.49	1.42	968	15.9	0.96	1.03	1156	21.5	1.49	0.85	1364	28	2.27	0.79	1545	34.3	3.14	0.74	-	-	-	-			
2000	546	5.9	0.24	1.84	738	9.9	0.51	1.43	968	15.9	0.99	1.04	1157	21.5	1.53	0.87	1365	28	2.33	0.80	1546	34.3	3.21	0.76	-	-	-	-			
2200	558	6.2	0.27	1.81	745	10.1	0.54	1.47	968	15.9	1.04	1.08	1157	21.5	1.61	0.89	1367	28.1	2.44	0.84	1547	34.4	3.34	0.79	-	-	-	-			
2400	573	6.6	0.3	1.79	754	10.3	0.58	1.49	970	15.9	1.1	1.11	1157	21.5	1.69	0.92	1369	28.1	2.55	0.86	1549	34.4	3.48	0.82	-	-	-	-			
2600	591	7.1	0.33	1.78	762	10.5	0.62	1.51	975	16	1.16	1.13	1158	21.5	1.77	0.95	1369	28.2	2.66	0.89	1551	34.5	3.63	0.84	-	-	-	-			
2800	610	7.7	0.36	1.76	771	10.7	0.67	1.51	982	16.2	1.22	1.15	1159	21.6	1.85	0.97	1369	28.2	2.78	0.91	1552	34.6	3.77	0.87	-	-	-	-			
3000	631	8.3	0.4	1.72	782	11	0.72	1.50	990	16.5	1.29	1.17	1163	21.7	1.94	0.99	1369	28.2	2.89	0.94	1552	34.6	3.92	0.89	-	-	-	-			
3100	641	8.7	0.42	1.70	788	11.1	0.75	1.50	994	16.6	1.32	1.18	1166	21.8	1.98	1.00	1370	28.2	2.95	0.95	1552	34.6	3.99	0.90	-	-	-	-			
3200	653	9	0.44	1.69	796	11.4	0.78	1.49	998	16.7	1.35	1.19	1169	21.9	2.02	1.01	1370	28.2	3.01	0.95	1553	34.6	4.06	0.91	-	-	-	-			
3400	675	9.7	0.49	1.63	811	11.9	0.84	1.48	1007	17	1.43	1.19	1176	22.1	2.11	1.03	1373	28.3	3.12	0.98	1553	34.6	4.21	0.93	-	-	-	-			
3600	699	10.5	0.54	1.59	829	12.6	0.9	1.47	1016	17.2	1.51	1.20	1183	22.3	2.2	1.04	1377	28.4	3.24	0.99	1554	34.6	4.36	0.95	-	-	-	-			
3700	711	10.9	0.57	1.56	838	13	0.93	1.46	1020	17.4	1.56	1.19	1188	22.5	2.25	1.05	1380	28.5	3.3	1.00	1554	34.6	4.44	0.96	-	-	-	-			
3800	723	11.3	0.6	1.53	847	13.3	0.97	1.45	1026	17.6	1.6	1.20	1192	22.6	2.3	1.05	1383	28.6	3.36	1.01	1555	34.7	4.51	0.97	-	-	-	-			
4000	748	12.2	0.65	1.51	867	14.1	1.04	1.43	1037	17.9	1.69	1.19	1201	22.9	2.4	1.06	1390	28.9	3.48	1.02	1560	34.8	4.66	0.99	-	-	-	-			
4200	773	13.1	0.72	1.45	888	14.9	1.11	1.42	1050	18.4	1.79	1.19	1209	23.2	2.52	1.06	1398	29.1	3.61	1.04	1565	35	4.81	1.00	-	-	-	-			
4400	799	14.1	0.79	1.41	909	15.8	1.2	1.38	1065	19.1	1.89	1.18	1219	23.4	2.64	1.07	1406	29.4	3.74	1.05	1572	35.3	4.97	1.01	-	-	-	-			
4600	825	15.1	0.86	1.37	931	16.7	1.29	1.36	1082	19.8	1.99	1.18	1229	23.7	2.77	1.06	1415	29.7	3.88	1.06	1579	35.6	5.13	1.03	-	-	-	-			
4800	851	16.1	0.94	1.33	954	17.7	1.38	1.34	1100	20.6	2.1	1.18	1241	24.1	2.9	1.06	1424	30	4.04	1.06	1587	35.9	5.29	1.04	-	-	-	-			
5000	878	17.2	1.03	1.29	978	18.7	1.48	1.31	1118	21.4	2.22	1.16	1254	24.6	3.04	1.06	1432	30.3	4.2	1.07	1595	36.3	5.47	1.05	-	-	-	-			
5500	945	19.9	1.26	1.20	1038	21.4	1.76	1.25	1168	23.8	2.54	1.14	1293	26.4	3.4	1.06	1457	31.1	4.64	1.07	1617	37.2	5.94	1.07	-	-	-	-			
6000	1014	22.7	1.54	1.12	1101	24.4	2.07	1.19	1223	26.2	2.91	1.10	1339	28.7	3.81	1.04	1490	32.5	5.12	1.07	1640	38.2	6.49	1.07	-	-	-	-			
6500	1084	25.6	1.87	1.04	1166	27.6	2.43	1.13	1280	28.9	3.33	1.07	1389	31.1	4.27	1.02	1530	34.8	5.63	1.06	1668	39.4	7.08	1.07	-	-	-	-			
6800	1126	27.4	2.09	1.00	1206	29.3	2.67	1.09	1316	30.6	3.6	1.05	1421	32.8	4.57	1.01	1556	36.3	5.96	1.05	1689	40.7	7.45	1.07	-	-	-	-			
6900	1140	28.1	2.16	0.99	1219	29.8	2.75	1.08	1328	31.2	3.69	1.04	1432	33.3	4.67	1.01	1566	36.8	6.08	1.05	1697	41.2	7.58	1.07	-	-	-	-			
7000	1154	28.7	2.24	0.98	1232	30.4	2.84	1.07	1340	31.8	3.79	1.03	1442	33.9	4.78	1.00	1575	37.4	6.19	1.05	-	-	-	-	-	-	-	-			
7100	1168	29.4	2.32	0.97	1246	30.9	2.93	1.06	1352	32.5	3.89	1.02	1454	34.5	4.89	1.00	1584	38	6.31	1.05	-	-	-	-	-	-	-	-			
7500	1225	31.8	2.67	0.92	1299	33.4	3.3	1.02	1402	35.3	4.3	1.00	1499	37.1	5.35	0.98	1624	40.5	6.81	1.04	-	-	-	-	-	-	-	-			
7700	1254	32.9	2.85	0.90	1327	34.7	3.5	1.00	1427	36.8	4.52	0.98	1522	38.5	5.59	0.97	1644	41.8	7.08	1.03	-	-	-	-	-	-	-	-			
8000	1297	35	3.15	0.87	1368	36.9	3.81	0.97	1465	39.1	4.87	0.96	1558	40.7	5.97	0.95	1676	44	7.5	1.02	-	-	-	-	-	-	-	-			
8200	1326	36.5	3.36	0.85	1395	38.3	4.03	0.95	1491	40.6	5.11	0.95	1582	42.2	6.24	0.94	1698	45.5	7.8	1.01	-	-	-	-	-	-	-	-			
8500	1370	38.7	3.69	0.82	1437	40.5	4.38	0.93	1530	43.1	5.5	0.93	1618	44.8	6.66	0.92	-	-	-	-	-	-	-	-	-	-	-	-			
9100	1457	43.3	4.41	0.78	1520	45.2	5.16	0.88	1609	48	6.33	0.89	1693	50.1	7.56	0.89	-	-	-	-	-	-	-	-	-	-	-	-			
9700	1545	48.6	5.24	0.74	1604	50.4	6.03	0.83	1689	53.3	7.26	0.86	-	-	-	-	-	-	-	-	-	-	-	-	-	-	-	-			
10000	1589	51.4	5.69	0.72	1647	53.2	6.51	0.81	-	-	-	-	-	-	-	-	-	-	-	-	-	-	-	-	-	-	-	-			

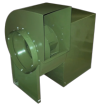
☐ Grey shaded areas meet or exceed the FEI standards for efficiency in California.  
 Performance certified is for installation type B: free inlet, ducted outlet. Power rating (BHP) does not include transmission losses. Performance ratings do not include the effect of appurtenances (accessories).  
 FEI calculated using AMCA 210 data and default motor efficiency without the motor.  
 For complete fan performance please use Delair or consult factory. [www.canarm.com/delair](http://www.canarm.com/delair)



Canarm certifies that the BI Series shown herein are licensed to bear the AMCA Seal. The ratings shown are based on tests and procedures performed in accordance with AMCA Publications 211 and comply with the requirements of the AMCA Certified Ratings Programme.

The AMCA certified ratings seal applies to air performance only. The BI Series shown herein are not approved by AMCA for FEI and FEP ratings.





# BI-24

Max RPM: 1400 Max HP: 15 Shaft size: 1-7/16"

CFM	1/2" SP				1" SP				1-1/2" SP				2" SP				3" SP				4" SP				5" SP							
	RPM	Sone	HP	FEI	RPM	Sone	HP	FEI	RPM	Sone	HP	FEI	RPM	Sone	HP	FEI	RPM	Sone	HP	FEI	RPM	Sone	HP	FEI	RPM	Sone	HP	FEI	RPM	Sone	HP	FEI
1000	469	5.7	0.16	1.51	661	10.3	0.39	1.06	810	14.8	0.66	0.88	936	19.2	0.97	0.77	1149	27.3	1.68	0.63	1329	34.7	2.5	0.55	-	-	-	-	-	-	-	-
1100	469	5.7	0.17	1.54	661	10.3	0.4	1.11	810	14.8	0.68	0.92	936	19.2	1	0.80	1148	27.2	1.73	0.66	1328	34.7	2.56	0.58	-	-	-	-	-	-	-	-
1200	469	5.7	0.17	1.63	662	10.3	0.42	1.14	809	14.8	0.7	0.95	935	19.2	1.03	0.83	1147	27.2	1.77	0.69	1326	34.6	2.62	0.61	-	-	-	-	-	-	-	-
1300	470	5.7	0.18	1.65	662	10.4	0.43	1.18	810	14.8	0.73	0.97	935	19.1	1.06	0.86	1147	27.2	1.81	0.72	1326	34.6	2.67	0.63	-	-	-	-	-	-	-	-
1400	470	5.7	0.19	1.67	663	10.4	0.45	1.20	810	14.8	0.75	1.00	935	19.1	1.09	0.88	1146	27.1	1.86	0.74	1325	34.5	2.73	0.66	-	-	-	-	-	-	-	-
1500	470	5.8	0.2	1.69	664	10.4	0.46	1.24	811	14.8	0.77	1.03	935	19.1	1.12	0.91	1145	27.1	1.9	0.77	1324	34.5	2.79	0.68	-	-	-	-	-	-	-	-
1600	472	5.8	0.21	1.71	664	10.4	0.48	1.26	811	14.9	0.79	1.06	935	19.2	1.15	0.93	1145	27.1	1.94	0.79	1323	34.4	2.85	0.70	-	-	-	-	-	-	-	-
1700	474	5.8	0.22	1.72	664	10.4	0.49	1.29	812	14.9	0.82	1.08	936	19.2	1.18	0.96	1145	27.1	1.99	0.81	1323	34.4	2.91	0.72	-	-	-	-	-	-	-	-
1800	476	5.9	0.22	1.80	664	10.4	0.51	1.31	813	14.9	0.84	1.10	937	19.2	1.21	0.98	1145	27.1	2.03	0.84	1323	34.4	2.97	0.74	-	-	-	-	-	-	-	-
1900	479	6	0.23	1.81	664	10.4	0.53	1.32	813	14.9	0.86	1.13	937	19.2	1.24	1.00	1146	27.1	2.08	0.85	1322	34.4	3.03	0.76	-	-	-	-	-	-	-	-
2000	482	6	0.24	1.82	665	10.4	0.54	1.35	814	15	0.89	1.14	938	19.3	1.27	1.02	1146	27.1	2.12	0.88	1322	34.4	3.08	0.78	-	-	-	-	-	-	-	-
2200	489	6.2	0.26	1.85	666	10.5	0.58	1.37	814	15	0.94	1.18	939	19.3	1.33	1.06	1147	27.2	2.22	0.91	1323	34.4	3.2	0.82	-	-	-	-	-	-	-	-
2400	495	6.5	0.29	1.82	670	10.6	0.61	1.42	814	15	0.99	1.21	939	19.3	1.4	1.09	1148	27.2	2.31	0.94	1324	34.5	3.33	0.85	-	-	-	-	-	-	-	-
2600	503	6.7	0.31	1.84	675	10.7	0.65	1.43	815	15	1.04	1.24	940	19.3	1.46	1.12	1150	27.3	2.4	0.98	1325	34.5	3.45	0.88	-	-	-	-	-	-	-	-
2800	514	7	0.34	1.82	681	10.9	0.68	1.47	818	15.1	1.09	1.27	940	19.3	1.53	1.15	1151	27.3	2.5	1.00	1326	34.6	3.57	0.91	-	-	-	-	-	-	-	-
3000	526	7.4	0.37	1.80	687	11.2	0.72	1.48	822	15.3	1.14	1.29	941	19.4	1.6	1.17	1151	27.4	2.6	1.03	1328	34.7	3.7	0.94	-	-	-	-	-	-	-	-
3200	540	7.9	0.4	1.79	694	11.5	0.77	1.48	827	15.5	1.19	1.32	944	19.5	1.66	1.20	1151	27.4	2.7	1.05	1329	34.7	3.83	0.96	-	-	-	-	-	-	-	-
3400	554	8.4	0.44	1.75	701	11.7	0.82	1.48	833	15.7	1.25	1.33	948	19.7	1.73	1.22	1151	27.4	2.8	1.07	1329	34.7	3.96	0.98	-	-	-	-	-	-	-	-
3600	570	8.9	0.48	1.71	709	12	0.87	1.48	839	15.9	1.31	1.34	953	19.9	1.8	1.24	1152	27.4	2.9	1.09	1329	34.7	4.09	1.00	-	-	-	-	-	-	-	-
3800	586	9.5	0.52	1.68	718	12.4	0.92	1.48	846	16.2	1.37	1.36	958	20.1	1.87	1.26	1154	27.5	3	1.11	1329	34.7	4.22	1.02	-	-	-	-	-	-	-	-
4000	603	10.1	0.56	1.66	729	12.9	0.98	1.47	852	16.5	1.44	1.36	964	20.3	1.95	1.27	1157	27.7	3.1	1.13	1330	34.8	4.35	1.04	-	-	-	-	-	-	-	-
4200	620	10.7	0.61	1.62	742	13.4	1.04	1.46	860	16.9	1.51	1.36	971	20.6	2.03	1.28	1162	27.9	3.2	1.15	1331	34.8	4.49	1.06	-	-	-	-	-	-	-	-
4400	638	11.5	0.66	1.58	755	14	1.1	1.46	868	17.3	1.59	1.36	978	21	2.11	1.29	1167	28.1	3.3	1.17	1332	34.9	4.62	1.08	-	-	-	-	-	-	-	-
4600	656	12.2	0.72	1.54	769	14.6	1.17	1.44	877	17.7	1.67	1.36	984	21.3	2.21	1.29	1172	28.3	3.41	1.18	1336	35.1	4.75	1.09	-	-	-	-	-	-	-	-
4800	674	12.9	0.78	1.50	783	15.3	1.24	1.43	888	18.3	1.75	1.36	991	21.6	2.3	1.30	1178	28.6	3.52	1.19	1340	35.3	4.89	1.11	-	-	-	-	-	-	-	-
5000	693	13.5	0.84	1.47	799	16	1.31	1.42	899	18.8	1.84	1.35	999	22	2.41	1.29	1184	28.9	3.64	1.20	1345	35.6	5.02	1.12	-	-	-	-	-	-	-	-
5500	741	14.6	1.01	1.38	839	18	1.52	1.37	932	20.4	2.08	1.33	1023	23.3	2.68	1.29	1201	29.9	3.96	1.22	1359	36.3	5.39	1.15	-	-	-	-	-	-	-	-
6000	791	15.7	1.21	1.30	882	20.1	1.76	1.31	969	22.3	2.34	1.30	1053	24.9	2.97	1.28	1218	30.8	4.33	1.22	1375	37.3	5.78	1.18	-	-	-	-	-	-	-	-
6500	841	17.1	1.45	1.22	927	22.4	2.03	1.26	1008	24.5	2.64	1.27	1087	26.7	3.3	1.26	1240	32	4.72	1.22	1391	38.3	6.24	1.18	-	-	-	-	-	-	-	-
6700	862	17.7	1.55	1.19	946	23.4	2.15	1.24	1025	25.3	2.77	1.26	1101	27.5	3.44	1.25	1251	32.6	4.89	1.22	1398	38.8	6.43	1.19	-	-	-	-	-	-	-	-
7000	893	18.6	1.71	1.15	974	24.5	2.33	1.21	1050	26.7	2.98	1.23	1124	28.9	3.66	1.24	1268	33.6	5.15	1.22	-	-	-	-	-	-	-	-	-	-	-	
7500	944	20.1	2.01	1.08	1022	25.9	2.66	1.16	1094	29.2	3.35	1.19	1164	31.2	4.07	1.21	1299	35.6	5.6	1.21	-	-	-	-	-	-	-	-	-	-	-	
8000	997	22.5	2.35	1.02	1070	27.4	3.04	1.11	1139	31.9	3.76	1.16	1206	33.8	4.51	1.18	1334	37.9	6.1	1.19	-	-	-	-	-	-	-	-	-	-	-	
8200	1018	23.5	2.5	1.00	1090	28	3.2	1.09	1158	33	3.94	1.14	1223	34.9	4.7	1.17	1349	38.9	6.31	1.19	-	-	-	-	-	-	-	-	-	-	-	
8500	1050	25.1	2.73	0.97	1120	29	3.45	1.06	1186	34.6	4.21	1.12	1249	36.5	5	1.15	1371	40.5	6.64	1.18	-	-	-	-	-	-	-	-	-	-	-	
8800	1081	26.7	2.97	0.94	1150	30.1	3.72	1.04	1214	35.6	4.5	1.09	1276	38.3	5.31	1.13	1395	42.2	6.99	1.17	-	-	-	-	-	-	-	-	-	-	-	
9000	1103	27.8	3.15	0.92	1171	30.8	3.9	1.02	1233	36.2	4.7	1.08	1294	39.5	5.53	1.12	-	-	-	-	-	-	-	-	-	-	-	-	-	-	-	
9300	1135	29.6	3.42	0.90	1201	31.9	4.2	1.00	1262	37.2	5.02	1.06	1321	41.4	5.86	1.10	-	-	-	-	-	-	-	-	-	-	-	-	-	-	-	
9500	1156	30.7	3.61	0.88	1221	32.6	4.4	0.98	1282	37.9	5.24	1.04	1340	42.7	6.1	1.09	-	-	-	-	-	-	-	-	-	-	-	-	-	-	-	
10000	1211	33.7	4.13	0.84	1273	34.5	4.95	0.94	1331	39.8	5.82	1.01	1387	45.2	6.72	1.06	-	-	-	-	-	-	-	-	-	-	-	-	-	-	-	
10100	1221	34.3	4.24	0.83	1283	34.9	5.07	0.94	1341	40.1	5.94	1.00	1396	45.6	6.85	1.05	-	-	-	-	-	-	-	-	-	-	-	-	-	-	-	
10200	1232	34.9	4.35	0.82	1294	35.3	5.19	0.93	1351	40.5	6.07	1.00	-	-	-	-	-	-	-	-	-	-	-	-	-	-	-	-	-	-	-	
10600	1276	37.4	4.81	0.80	1335	37	5.68	0.90	1391	42.2	6.59	0.97	-	-	-	-	-	-	-	-	-	-	-	-	-	-	-	-	-	-	-	
11200	1341	41.4	5.56	0.76	1398	40.6	6.48	0.86	-	-	-	-	-	-	-	-	-	-	-	-	-	-	-	-	-	-	-	-	-	-	-	
11700	1396	44.9	6.26	0.73	-	-	-	-	-	-	-	-	-	-	-	-	-	-	-	-	-	-	-	-	-	-	-	-	-	-	-	

Grey shaded areas meet or exceed the FEI standards for efficiency in California.  
 Performance certified is for installation type B: free inlet, ducted outlet. Power rating (BHP) does not include transmission losses. Performance ratings do not include the effect of appurtenances (accessories).

FEI calculated using AMCA 210 data and default motor efficiency without the motor.  
 For complete fan performance please use Delair or consult factory. [www.canarm.com/delair](http://www.canarm.com/delair)



Canarm certifies that the BI Series shown herein are licensed to bear the AMCA Seal. The ratings shown are based on tests and procedures performed in accordance with AMCA Publications 211 and comply with the requirements of the AMCA Certified Ratings Programme.

The AMCA certified ratings seal applies to air performance only. The BI Series shown herein are not approved by AMCA for FEI and FEP ratings.



# BI-27

Max RPM: 1400 Max HP: 15 Shaft size: 1-7/16"



CFM	1/2" SP				1" SP				1-1/2" SP				2" SP				3" SP				4" SP				5" SP						
	RPM	Sone	HP	FEI	RPM	Sone	HP	FEI	RPM	Sone	HP	FEI	RPM	Sone	HP	FEI	RPM	Sone	HP	FEI	RPM	Sone	HP	FEI	RPM	Sone	HP	FEI	RPM	Sone	HP
1000	424	5.1	0.18	1.38	600	9.6	0.44	0.96	736	13.8	0.75	0.78	851	17.9	1.12	0.67	1045	25.6	1.95	0.55	1208	33.1	2.92	0.48	1352	40.5	3.99	0.43			
1100	425	5.1	0.18	1.47	600	9.6	0.45	1.01	736	13.8	0.78	0.81	850	17.9	1.14	0.71	1044	25.6	2	0.58	1207	33.1	2.97	0.50	1351	40.5	4.06	0.45			
1200	425	5.1	0.19	1.50	600	9.5	0.47	1.03	735	13.7	0.8	0.84	850	17.9	1.17	0.74	1043	25.6	2.04	0.61	1206	33	3.03	0.53	1350	40.4	4.14	0.48			
1400	426	5.1	0.21	1.54	600	9.6	0.5	1.09	735	13.7	0.84	0.91	849	17.8	1.23	0.79	1041	25.5	2.13	0.65	1204	32.9	3.15	0.57	1348	40.3	4.28	0.52			
1600	426	5.1	0.22	1.64	601	9.6	0.53	1.15	735	13.7	0.89	0.95	848	17.8	1.29	0.84	1040	25.5	2.21	0.70	1203	32.9	3.26	0.62	1346	40.2	4.42	0.56			
1800	427	5.1	0.24	1.67	602	9.6	0.56	1.20	735	13.7	0.93	1.01	848	17.8	1.35	0.89	1039	25.4	2.3	0.74	1201	32.8	3.38	0.66	1345	40.1	4.57	0.60			
2000	429	5.2	0.26	1.70	603	9.6	0.59	1.25	736	13.8	0.98	1.04	849	17.9	1.41	0.93	1039	25.4	2.39	0.78	1201	32.8	3.5	0.69	1343	40.1	4.71	0.63			
2200	432	5.3	0.27	1.78	603	9.6	0.62	1.29	737	13.8	1.02	1.09	850	17.9	1.47	0.97	1039	25.4	2.48	0.82	1200	32.8	3.61	0.73	1343	40	4.86	0.67			
2400	437	5.4	0.29	1.80	603	9.6	0.66	1.31	738	13.8	1.07	1.12	851	17.9	1.53	1.00	1040	25.4	2.57	0.85	1200	32.8	3.73	0.76	1342	40	5.01	0.70			
2600	441	5.5	0.31	1.82	604	9.7	0.69	1.35	738	13.8	1.12	1.15	852	18	1.6	1.03	1041	25.5	2.66	0.88	1200	32.8	3.85	0.79	1341	40	5.15	0.73			
2800	446	5.6	0.34	1.80	606	9.7	0.72	1.39	738	13.8	1.17	1.18	852	18	1.66	1.06	1042	25.5	2.75	0.91	1201	32.8	3.97	0.82	1341	40	5.3	0.76			
3000	452	5.8	0.36	1.82	609	9.8	0.76	1.40	739	13.9	1.22	1.21	852	18	1.73	1.08	1043	25.6	2.84	0.94	1202	32.8	4.09	0.85	1342	40	5.45	0.78			
3200	458	5.9	0.39	1.80	613	9.9	0.79	1.44	740	13.9	1.27	1.23	853	18	1.79	1.11	1044	25.6	2.94	0.97	1203	32.9	4.21	0.87	1343	40	5.6	0.81			
3500	471	6.4	0.43	1.80	620	10.1	0.85	1.46	743	14	1.35	1.26	853	18	1.89	1.15	1044	25.6	3.08	1.00	1204	32.9	4.4	0.91	1344	40.1	5.83	0.84			
3800	485	7	0.48	1.77	628	10.3	0.91	1.48	749	14.2	1.42	1.30	855	18.1	1.99	1.18	1044	25.6	3.23	1.03	1206	33	4.59	0.94	1346	40.2	6.06	0.88			
4000	496	7.4	0.51	1.76	632	10.4	0.96	1.48	753	14.3	1.48	1.31	858	18.2	2.06	1.19	1044	25.6	3.33	1.05	1206	33	4.72	0.96	1347	40.2	6.22	0.89			
4200	507	7.8	0.55	1.73	638	10.6	1.01	1.48	758	14.5	1.53	1.33	861	18.3	2.13	1.21	1045	25.7	3.43	1.07	1206	33	4.85	0.98	1348	40.3	6.38	0.91			
4400	519	8.3	0.59	1.70	644	10.8	1.06	1.48	762	14.6	1.59	1.34	865	18.5	2.19	1.23	1046	25.7	3.53	1.09	1206	33	4.98	1.00	1348	40.3	6.54	0.93			
4600	531	8.9	0.63	1.68	651	11	1.12	1.47	767	14.8	1.66	1.34	869	18.6	2.27	1.24	1047	25.7	3.63	1.10	1206	33	5.12	1.01	1348	40.3	6.7	0.95			
4800	543	9.4	0.67	1.66	659	11.4	1.17	1.47	772	15	1.73	1.35	874	18.8	2.34	1.26	1049	25.9	3.73	1.12	1206	33.1	5.25	1.03	1348	40.3	6.87	0.96			
5000	556	10	0.72	1.62	668	11.8	1.23	1.46	777	15.2	1.8	1.35	878	19	2.42	1.27	1052	26	3.83	1.13	1207	33.1	5.38	1.04	1348	40.3	7.03	0.98			
5300	576	10.9	0.79	1.59	683	12.6	1.32	1.45	786	15.5	1.92	1.35	886	19.2	2.55	1.28	1058	26.2	3.99	1.15	1209	33.2	5.59	1.06	1349	40.4	7.28	1.00			
5500	589	11.5	0.85	1.55	693	13.2	1.39	1.44	793	15.7	2	1.35	891	19.4	2.64	1.28	1062	26.4	4.09	1.17	1211	33.3	5.72	1.08	1349	40.4	7.45	1.01			
6000	624	13.2	1	1.47	721	14.7	1.57	1.41	813	16.8	2.21	1.34	904	19.9	2.89	1.28	1073	26.9	4.37	1.19	1219	33.6	6.05	1.11	1352	40.6	7.87	1.05			
6500	660	14.7	1.17	1.40	750	16.3	1.77	1.37	837	18.2	2.44	1.33	921	20.6	3.16	1.28	1085	27.4	4.68	1.21	1229	34.1	6.41	1.14	1359	41	8.28	1.08			
7000	696	16.3	1.36	1.33	782	18.1	2	1.33	863	19.8	2.69	1.31	942	21.9	3.44	1.28	1097	27.9	5.04	1.22	1241	34.7	6.79	1.16	1369	41.5	8.71	1.10			
7500	734	18.1	1.57	1.27	815	20	2.25	1.29	891	21.5	2.97	1.29	966	23.4	3.75	1.27	1112	28.6	5.42	1.22	1253	35.3	7.2	1.17	1380	42.1	9.17	1.13			
8000	771	19.9	1.81	1.20	849	22	2.53	1.25	921	23.4	3.28	1.26	992	25.1	4.08	1.25	1129	29.4	5.83	1.21	1265	35.9	7.68	1.18	1392	42.7	9.66	1.14			
8300	794	21	1.97	1.17	869	23.3	2.71	1.22	940	24.6	3.48	1.24	1009	26.2	4.3	1.24	1142	30.3	6.08	1.21	1273	36.3	7.98	1.18	1399	43.2	9.97	1.15			
8500	810	21.7	2.08	1.15	884	24.1	2.83	1.21	953	25.4	3.62	1.23	1020	27	4.45	1.23	1150	31	6.25	1.21	1279	36.6	8.18	1.18	-	-	-	-			
9000	849	23.7	2.37	1.09	919	26	3.16	1.17	986	27.6	3.99	1.20	1050	29.1	4.85	1.21	1174	32.8	6.71	1.20	1295	37.5	8.71	1.18	-	-	-	-			
9500	887	25.7	2.7	1.04	955	28.1	3.52	1.13	1019	29.9	4.39	1.17	1080	31.2	5.28	1.19	1199	34.9	7.2	1.19	1315	38.9	9.27	1.18	-	-	-	-			
10000	927	27.9	3.06	1.00	992	30.2	3.92	1.09	1053	32.4	4.82	1.14	1112	33.7	5.75	1.16	1226	37	7.72	1.18	1337	40.8	9.85	1.17	-	-	-	-			
10500	966	30.1	3.46	0.96	1030	32.4	4.35	1.05	1089	34.9	5.28	1.11	1145	36.4	6.25	1.14	1255	39.2	8.28	1.17	1361	42.9	10.46	1.17	-	-	-	-			
11000	1006	32.5	3.89	0.92	1067	34.9	4.81	1.02	1124	37.4	5.78	1.08	1179	39.2	6.79	1.11	1284	41.8	8.88	1.15	1386	45.2	11.12	1.16	-	-	-	-			
11200	1022	33.5	4.07	0.90	1083	36	5.01	1.00	1139	38.4	5.99	1.06	1192	40.4	7.02	1.10	1296	42.8	9.13	1.14	1397	46.2	11.39	1.16	-	-	-	-			
11300	1030	34	4.16	0.90	1090	36.5	5.11	1.00	1146	38.9	6.1	1.06	1199	41	7.13	1.10	1303	43.4	9.26	1.14	-	-	-	-	-	-	-	-			
11500	1046	35	4.35	0.88	1105	37.5	5.31	0.98	1160	40	6.32	1.05	1213	42.1	7.37	1.09	1315	44.4	9.52	1.13	-	-	-	-	-	-	-	-			
12000	1087	37.8	4.86	0.85	1144	40.3	5.85	0.95	1197	42.8	6.9	1.02	1248	44.8	7.98	1.06	1347	47.3	10.21	1.11	-	-	-	-	-	-	-	-			
12400	1119	40.1	5.29	0.83	1175	42.6	6.31	0.93	1227	44.8	7.39	1.00	1277	46.9	8.5	1.04	1372	49.8	10.79	1.10	-	-	-	-	-	-	-	-			
12800	1152	42.4	5.75	0.80	1206	44.9	6.8	0.91	1257	46.9	7.9	0.98	1305	49.2	9.04	1.02	1399	52.3	11.39	1.08	-	-	-	-	-	-	-	-			
13400	1201	46.1	6.5	0.77	1253	48.2	7.59	0.87	1302	50.4	8.73	0.94	1349	52.6	9.91	1.00	-	-	-	-	-	-	-	-	-	-	-	-			
14100	1258	50.3	7.44	0.74	1307	52.4	8.6	0.84	1355	54.7	9.78	0.91	1400	57	11.01	0.96	-	-	-	-	-	-	-	-	-	-	-	-			
14600	1299	53.4	8.18	0.72	1347	55.6	9.37	0.82	1394	57.9	10.59	0.89	-	-	-	-	-	-	-	-	-	-	-	-	-	-	-	-			
15000	1332	56.1	8.8	0.71	1379	58.3	10.03	0.80	-	-	-	-	-	-	-	-	-	-	-	-	-	-	-	-	-	-	-	-			

Grey shaded areas meet or exceed the FEI standards for efficiency in California.

Performance certified is for installation type B: free inlet, ducted outlet. Power rating (BHP) does not include transmission losses. Performance ratings do not include the effect of appurtenances (accessories).

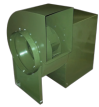
FEI calculated using AMCA 210 data and default motor efficiency without the motor.

For complete fan performance please use Delair or consult factory. [www.canarm.com/delair](http://www.canarm.com/delair)



Canarm certifies that the BI Series shown herein are licensed to bear the AMCA Seal. The ratings shown are based on tests and procedures performed in accordance with AMCA Publications 211 and comply with the requirements of the AMCA Certified Ratings Programme.

The AMCA certified ratings seal applies to air performance only. The BI Series shown herein are not approved by AMCA for FEI and FEP ratings.



# BI-30

Max RPM: 1300 Max HP: 15 Shaft size: 1-11/16"

CFM	1/2" SP				1" SP				1-1/2" SP				2" SP				3" SP				4" SP				5" SP						
	RPM	Sone	HP	FEI	RPM	Sone	HP	FEI	RPM	Sone	HP	FEI	RPM	Sone	HP	FEI	RPM	Sone	HP	FEI	RPM	Sone	HP	FEI	RPM	Sone	HP	FEI	RPM	Sone	HP
1000	387	5	0.21	1.22	547	9.8	0.53	0.82	671	14.7	0.93	0.65	775	18.6	1.4	0.55	950	27.9	2.47	0.44	1098	38.5	3.72	0.38	1228	48.7	5.12	0.34			
1200	388	5	0.22	1.33	547	9.8	0.56	0.89	670	14.6	0.97	0.71	775	18.6	1.45	0.61	950	27.8	2.55	0.49	1097	38.4	3.83	0.42	1228	48.6	5.26	0.38			
1400	388	5	0.24	1.38	548	9.9	0.59	0.95	670	14.6	1.02	0.76	774	18.6	1.5	0.66	949	27.8	2.64	0.54	1097	38.3	3.94	0.46	1227	48.6	5.39	0.42			
1600	389	5	0.25	1.48	548	9.9	0.61	1.02	671	14.6	1.06	0.81	774	18.6	1.56	0.71	949	27.8	2.72	0.58	1096	38.3	4.05	0.50	1226	48.5	5.53	0.45			
1800	390	5.1	0.27	1.51	549	9.9	0.64	1.07	671	14.7	1.1	0.86	774	18.6	1.61	0.75	948	27.8	2.8	0.62	1095	38.2	4.16	0.54	1225	48.5	5.67	0.49			
2000	390	5.1	0.28	1.59	550	9.9	0.67	1.11	672	14.7	1.14	0.91	775	18.6	1.67	0.79	948	27.8	2.88	0.66	1095	38.2	4.27	0.57	1225	48.5	5.8	0.52			
2200	389	5.1	0.3	1.62	550	10	0.7	1.16	672	14.7	1.18	0.95	775	18.6	1.72	0.83	949	27.8	2.96	0.69	1095	38.2	4.37	0.61	1224	48.4	5.94	0.55			
2500	390	5.1	0.32	1.71	552	10	0.75	1.21	674	14.8	1.24	1.01	776	18.7	1.8	0.89	949	27.8	3.08	0.74	1095	38.2	4.54	0.65	1224	48.4	6.14	0.59			
2800	392	4.9	0.35	1.74	551	10	0.79	1.27	675	14.8	1.31	1.06	777	18.7	1.89	0.94	950	27.9	3.21	0.79	1096	38.3	4.7	0.70	1225	48.5	6.34	0.64			
3000	395	4.9	0.37	1.76	551	10	0.83	1.29	675	14.8	1.36	1.09	778	18.7	1.95	0.97	951	27.9	3.29	0.82	1097	38.3	4.81	0.73	1225	48.5	6.48	0.66			
3200	398	5	0.39	1.78	551	10	0.86	1.32	676	14.8	1.4	1.12	779	18.8	2.01	0.99	952	28	3.37	0.85	1097	38.4	4.92	0.75	1226	48.5	6.61	0.69			
3300	400	5.1	0.4	1.79	551	10	0.88	1.33	676	14.8	1.43	1.13	779	18.8	2.04	1.01	952	28	3.42	0.86	1097	38.4	4.97	0.77	1226	48.5	6.68	0.70			
3400	402	5.1	0.41	1.80	551	10	0.89	1.35	676	14.8	1.45	1.14	780	18.8	2.07	1.02	952	28	3.46	0.87	1098	38.4	5.03	0.78	1226	48.5	6.75	0.71			
3600	406	5.3	0.43	1.82	552	9.5	0.93	1.37	675	14.8	1.5	1.17	780	18.8	2.13	1.05	953	28.1	3.55	0.89	1098	38.5	5.14	0.80	1227	48.6	6.89	0.73			
3800	411	5.4	0.46	1.80	554	9.5	0.96	1.39	675	14.8	1.55	1.19	780	18.8	2.19	1.07	954	28.1	3.63	0.92	1099	38.5	5.25	0.82	1227	48.6	7.03	0.76			
4000	418	5.6	0.48	1.82	556	9.5	1	1.41	675	14.8	1.6	1.21	780	18.8	2.26	1.09	954	28.2	3.72	0.94	1100	38.6	5.37	0.85	1228	48.6	7.17	0.78			
4600	442	6.3	0.58	1.76	564	9.8	1.12	1.44	678	13.8	1.76	1.26	780	18.8	2.46	1.14	956	28.3	4	1.00	1102	38.8	5.72	0.90	1230	48.8	7.6	0.84			
5000	458	6.8	0.65	1.73	572	10.1	1.2	1.47	682	13.8	1.87	1.29	781	18.8	2.6	1.17	955	28.2	4.2	1.03	1104	38.9	5.97	0.94	1232	48.8	7.89	0.87			
5500	479	7.5	0.75	1.67	586	10.6	1.33	1.47	689	14	2.01	1.32	784	17.9	2.77	1.21	955	28.2	4.45	1.07	1104	38.9	6.29	0.98	1234	48.9	8.27	0.91			
5800	492	7.9	0.81	1.65	597	11	1.41	1.46	694	14.2	2.11	1.33	788	18.1	2.89	1.22	955	28.2	4.6	1.09	1103	38.8	6.48	1.00	1234	49	8.5	0.93			
6000	501	8.3	0.86	1.62	604	11.2	1.47	1.46	698	14.4	2.17	1.34	790	18.2	2.96	1.24	956	28.2	4.71	1.10	1103	38.8	6.62	1.01	1234	49	8.66	0.95			
6500	525	9.1	0.99	1.55	624	11.8	1.63	1.44	711	14.8	2.35	1.34	798	18.5	3.16	1.26	959	26.7	4.97	1.13	1103	38.8	6.95	1.04	1233	48.9	9.07	0.98			
6900	547	9.9	1.1	1.50	641	12.5	1.77	1.42	723	15.3	2.5	1.35	806	18.9	3.33	1.27	962	26.8	5.19	1.15	1103	38.9	7.23	1.06	1233	48.9	9.41	1.00			
7500	579	11.2	1.29	1.43	666	13.4	2	1.38	746	16.3	2.77	1.33	821	19.5	3.61	1.28	970	27.1	5.53	1.17	1107	36.2	7.65	1.09	1233	48.9	9.92	1.03			
8000	607	12.4	1.47	1.36	687	14.3	2.21	1.35	766	17.1	3.02	1.31	837	20.2	3.87	1.28	978	27.5	5.83	1.19	1112	36.4	8.01	1.11	1235	44.5	10.35	1.05			
8500	636	13.5	1.67	1.30	710	15.3	2.44	1.32	788	18	3.29	1.29	855	21	4.17	1.27	988	28	6.15	1.20	1118	36.7	8.39	1.13	1239	44.8	10.79	1.08			
9000	665	14.8	1.89	1.25	734	16.5	2.69	1.28	808	18.9	3.57	1.27	875	21.9	4.49	1.26	1000	28.6	6.5	1.21	1126	37.1	8.78	1.15	1243	45	11.25	1.09			
9500	694	16	2.13	1.19	759	17.8	2.97	1.24	829	20	3.88	1.25	896	22.7	4.83	1.24	1014	29.3	6.87	1.21	1134	37.6	9.2	1.16	1250	45.2	11.72	1.11			
10000	724	17.4	2.4	1.14	786	19.1	3.27	1.21	851	21.1	4.2	1.23	917	23.7	5.2	1.23	1032	30.2	7.29	1.21	1145	38.1	9.64	1.17	1257	45.4	12.21	1.12			
10500	754	18.7	2.68	1.10	814	20.4	3.59	1.17	874	22.4	4.55	1.20	938	24.8	5.58	1.21	1051	31.2	7.74	1.20	1158	38.8	10.11	1.18	1266	45.6	12.73	1.14			
11000	784	20.1	3	1.05	842	21.9	3.94	1.14	897	23.6	4.93	1.18	959	26	5.99	1.19	1071	32.1	8.22	1.19	1172	39.5	10.61	1.18	1276	45.9	13.27	1.15			
11700	826	22.2	3.47	1.00	881	24	4.47	1.09	934	25.7	5.51	1.14	990	27.8	6.61	1.16	1100	33.5	8.94	1.18	1197	40.7	11.4	1.17	1293	46.4	14.08	1.15			
11900	838	22.8	3.62	0.98	893	24.6	4.63	1.08	944	26.3	5.68	1.13	999	28.3	6.8	1.16	1109	33.9	9.16	1.17	1205	40.9	11.64	1.17	1299	46.6	14.32	1.16			
12500	874	24.6	4.09	0.94	927	26.6	5.15	1.04	977	28.2	6.24	1.10	1027	30.1	7.38	1.13	1134	35	9.83	1.16	1229	41.6	12.39	1.16	-	-	-	-			
13200	917	26.9	4.69	0.89	968	28.8	5.8	1.00	1015	30.6	6.94	1.06	1062	32.4	8.13	1.10	1163	37.2	10.67	1.14	1258	42.4	13.33	1.15	-	-	-	-			
13500	935	27.9	4.96	0.88	986	29.9	6.1	0.98	1032	31.7	7.26	1.05	1078	33.5	8.47	1.09	1176	38.2	11.04	1.13	1270	42.9	13.76	1.15	-	-	-	-			
14200	978	30.3	5.65	0.84	1027	32.4	6.84	0.94	1072	34.3	8.06	1.01	1115	36	9.31	1.06	1206	40.2	11.96	1.11	1300	43.9	14.79	1.13	-	-	-	-			
14500	997	31.4	5.96	0.82	1045	33.6	7.18	0.92	1089	35.4	8.42	1.00	1132	37.3	9.69	1.05	1220	41	12.38	1.10	-	-	-	-	-	-	-	-			
15000	1027	33.3	6.52	0.80	1075	35.5	7.77	0.90	1118	37.5	9.05	0.97	1159	39.3	10.35	1.02	1243	42.3	13.1	1.09	-	-	-	-	-	-	-	-			
15600	1065	35.7	7.22	0.77	1111	37.9	8.53	0.87	1153	40	9.85	0.94	1193	41.8	11.2	1.00	1272	44.1	14.01	1.07	-	-	-	-	-	-	-	-			
16100	1096	37.7	7.85	0.75	1141	40	9.2	0.85	1182	42.1	10.56	0.92	1221	43.4	11.94	0.98	1297	45.7	14.82	1.05	-	-	-	-	-	-	-	-			
17400	1177	43.4	9.67	0.70	1220	45.2	11.12	0.80	1259	46.6	12.58	0.87	1296	48	14.07	0.93	-	-	-	-	-	-	-	-	-	-	-	-	-		
18000	1214	45.8	10.6	0.68	1256	47.3	12.1	0.78	1295	48.8	13.61	0.85	-	-	-	-	-	-	-	-	-	-	-	-	-	-	-	-			
18700	1258	48.3	11.77	0.66	1299	49.9	13.32	0.75	-	-	-	-	-	-	-	-	-	-	-	-	-	-	-	-	-	-	-	-			
19300	1296	50.6	12.83	0.64	-	-	-	-	-	-	-	-	-	-	-	-	-	-	-	-	-	-	-	-	-	-	-	-			

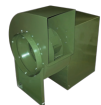
Grey shaded areas meet or exceed the FEI standards for efficiency in California. Performance certified is for installation type B: free inlet, ducted outlet. Power rating (BHP) does not include transmission losses. Performance ratings do not include the effect of appurtenances (accessories).

FEI calculated using AMCA 210 data and default motor efficiency without the motor. For complete fan performance please use Delair or consult factory. [www.canarm.com/delair](http://www.canarm.com/delair)



Canarm certifies that the BI Series shown herein are licensed to bear the AMCA Seal. The ratings shown are based on tests and procedures performed in accordance with AMCA Publications 211 and comply with the requirements of the AMCA Certified Ratings Programme.

The AMCA certified ratings seal applies to air performance only. The BI Series shown herein are not approved by AMCA for FEI and FEP ratings.

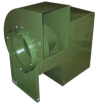


# BI-33

Max RPM: 1180 Max HP: 20 Shaft size: 1-11/16"



CFM	1/2" SP				1" SP				1-1/2" SP				2" SP				3" SP				4" SP				5" SP							
	RPM	Sone	HP	FEI	RPM	Sone	HP	FEI	RPM	Sone	HP	FEI	RPM	Sone	HP	FEI	RPM	Sone	HP	FEI	RPM	Sone	HP	FEI	RPM	Sone	HP	FEI	RPM	Sone	HP	FEI
1000	352	5	0.24	1.10	498	9.7	0.62	0.71	611	14.4	1.09	0.56	706	18.4	1.63	0.48	866	26.7	2.91	0.38	1001	35.5	4.4	0.32	1119	44.8	6.08	0.29				
1200	352	5	0.25	1.20	498	9.7	0.64	0.79	610	14.4	1.13	0.62	706	18.3	1.69	0.53	865	26.7	2.99	0.42	1000	35.4	4.51	0.36	1118	44.7	6.21	0.32				
1400	353	5	0.26	1.30	498	9.7	0.67	0.85	610	14.3	1.17	0.67	705	18.3	1.74	0.58	864	26.6	3.07	0.46	999	35.3	4.62	0.40	1118	44.7	6.34	0.36				
1600	353	5.1	0.28	1.34	498	9.7	0.7	0.90	610	14.3	1.21	0.72	704	18.3	1.79	0.62	864	26.6	3.15	0.50	998	35.3	4.72	0.43	1117	44.6	6.47	0.39				
1800	354	5.1	0.29	1.43	499	9.7	0.72	0.96	610	14.3	1.25	0.77	704	18.3	1.85	0.66	863	26.6	3.23	0.54	998	35.2	4.83	0.47	1116	44.5	6.61	0.42				
2000	355	5.1	0.31	1.46	499	9.7	0.75	1.01	610	14.4	1.29	0.81	704	18.3	1.9	0.70	863	26.6	3.31	0.58	997	35.2	4.93	0.50	1115	44.5	6.74	0.45				
2200	355	5.1	0.32	1.53	500	9.7	0.78	1.05	611	14.4	1.33	0.85	705	18.3	1.95	0.74	863	26.5	3.39	0.61	997	35.2	5.04	0.53	1115	44.4	6.87	0.48				
2400	355	5.1	0.34	1.56	501	9.8	0.81	1.09	611	14.4	1.37	0.89	705	18.3	2.01	0.78	863	26.5	3.47	0.64	996	35.1	5.15	0.56	1114	44.4	7	0.51				
2600	355	5.1	0.36	1.59	501	9.8	0.84	1.13	612	14.4	1.41	0.93	705	18.3	2.06	0.81	863	26.6	3.55	0.67	996	35.1	5.25	0.59	1114	44.4	7.14	0.53				
2800	355	5.1	0.38	1.62	502	9.8	0.87	1.16	613	14.4	1.45	0.96	706	18.4	2.12	0.84	863	26.6	3.63	0.70	996	35.1	5.36	0.62	1114	44.3	7.27	0.56				
3100	356	5.1	0.4	1.69	503	9.9	0.92	1.20	614	14.5	1.52	1.01	707	18.4	2.2	0.89	864	26.6	3.75	0.74	997	35.2	5.52	0.65	1114	44.3	7.47	0.59				
3400	357	5.2	0.43	1.71	503	9.9	0.97	1.24	615	14.5	1.59	1.05	708	18.5	2.29	0.93	865	26.7	3.88	0.78	997	35.2	5.68	0.69	1114	44.4	7.67	0.63				
3600	359	5.2	0.44	1.77	503	9.9	1	1.27	615	14.5	1.63	1.08	709	18.5	2.35	0.95	865	26.7	3.96	0.80	998	35.2	5.79	0.71	1115	44.4	7.8	0.65				
3800	361	5.3	0.46	1.78	502	9.8	1.03	1.30	616	14.5	1.68	1.10	709	18.5	2.41	0.97	866	26.7	4.04	0.83	998	35.3	5.9	0.74	1115	44.4	7.94	0.67				
4000	363	5.4	0.48	1.80	503	9.8	1.07	1.31	616	14.5	1.73	1.12	710	18.6	2.47	1.00	867	26.8	4.13	0.85	999	35.3	6.01	0.76	1115	44.5	8.07	0.69				
4500	372	5.7	0.54	1.81	504	9.9	1.15	1.37	616	14.5	1.86	1.16	712	18.6	2.63	1.05	868	26.9	4.35	0.90	1000	35.4	6.29	0.81	1117	44.6	8.42	0.74				
5000	384	6.1	0.61	1.79	507	10	1.24	1.41	616	14.5	1.99	1.21	711	18.6	2.8	1.09	870	27	4.58	0.94	1002	35.6	6.58	0.85	1119	44.7	8.77	0.78				
5500	399	6.6	0.69	1.76	512	10.2	1.34	1.44	617	14.6	2.12	1.24	711	18.6	2.97	1.12	872	27	4.82	0.98	1004	35.7	6.88	0.89	1120	44.9	9.13	0.83				
5700	406	6.8	0.72	1.76	515	10.3	1.38	1.45	618	14.6	2.17	1.26	711	18.6	3.04	1.14	871	27	4.92	1.00	1005	35.7	7.01	0.91	1121	44.9	9.28	0.84				
6000	415	7.2	0.78	1.72	519	10.5	1.44	1.46	620	14.7	2.25	1.28	711	18.6	3.14	1.16	871	27	5.08	1.02	1006	35.8	7.2	0.93	1122	45	9.51	0.86				
6500	431	7.7	0.88	1.68	529	11	1.57	1.46	624	14.8	2.38	1.31	713	18.7	3.31	1.19	871	27	5.34	1.04	1006	35.9	7.52	0.96	1124	45.2	9.89	0.89				
7000	448	8.4	0.98	1.64	542	11.5	1.71	1.45	631	15.1	2.54	1.32	716	18.9	3.48	1.22	871	27	5.6	1.07	1006	35.8	7.86	0.99	1125	45.3	10.29	0.92				
7200	454	8.6	1.03	1.62	548	11.8	1.77	1.45	634	15.2	2.6	1.33	718	18.9	3.56	1.23	871	27	5.7	1.08	1006	35.8	8	1.00	1125	45.3	10.45	0.94				
7500	465	9	1.1	1.59	556	12.2	1.86	1.44	639	15.4	2.71	1.33	721	19.1	3.67	1.24	872	27	5.86	1.10	1005	35.8	8.21	1.01	1125	45.3	10.71	0.95				
8000	484	9.8	1.24	1.53	572	12.9	2.03	1.42	649	15.8	2.89	1.34	727	19.4	3.87	1.26	874	27.2	6.1	1.13	1006	35.8	8.56	1.03	1124	45.2	11.14	0.97				
8500	504	10.6	1.38	1.48	588	13.7	2.21	1.40	662	16.5	3.1	1.34	735	19.8	4.09	1.27	877	27.4	6.36	1.15	1006	35.9	8.91	1.06	1124	45.2	11.57	1.00				
9000	524	11.5	1.55	1.42	604	14.4	2.4	1.38	676	17.2	3.33	1.32	744	20.3	4.33	1.28	881	27.6	6.63	1.17	1008	36	9.24	1.08	1124	45.2	12.01	1.02				
9500	545	12.6	1.72	1.38	620	15.1	2.61	1.35	691	17.9	3.57	1.31	756	20.9	4.6	1.27	887	28	6.92	1.18	1010	36.2	9.58	1.10	1125	45.3	12.44	1.04				
10000	566	13.6	1.91	1.33	637	15.8	2.83	1.33	707	18.7	3.83	1.30	769	21.6	4.88	1.27	893	28.4	7.24	1.20	1014	36.4	9.93	1.12	1127	45.4	12.86	1.06				
11000	610	15.7	2.35	1.23	672	17.6	3.33	1.27	739	20.3	4.4	1.26	799	23.3	5.52	1.25	911	29.5	7.95	1.21	1024	37.2	10.69	1.15	1132	45.9	13.71	1.09				
12000	654	17.9	2.85	1.15	712	19.5	3.9	1.21	771	22.1	5.03	1.23	831	25.1	6.23	1.22	935	31.1	8.75	1.21	1039	38.3	11.56	1.17	1142	46.8	14.63	1.12				
13000	699	20.1	3.43	1.07	753	21.7	4.56	1.15	806	23.9	5.75	1.18	863	26.8	7.01	1.20	964	33	9.67	1.19	1059	39.8	12.54	1.17	1155	47.9	15.68	1.14				
14000	744	22.4	4.1	1.00	795	24.1	5.3	1.09	844	26	6.55	1.14	896	28.8	7.88	1.16	995	35.1	10.68	1.18	1084	41.7	13.64	1.17	1173	49.4	16.85	1.15				
14100	748	22.6	4.17	1.00	800	24.3	5.38	1.09	848	26.2	6.64	1.14	899	29	7.97	1.16	999	35.3	10.79	1.17	1087	41.9	13.76	1.17	1175	49.6	16.97	1.15				
14300	757	23.1	4.31	0.99	808	24.8	5.54	1.08	856	26.7	6.81	1.13	906	29.4	8.16	1.15	1005	35.7	11	1.17	1093	42.4	14	1.17	1179	49.9	17.22	1.15				
15000	789	24.9	4.85	0.95	838	26.7	6.13	1.04	884	28.5	7.46	1.10	931	30.9	8.84	1.13	1027	37.3	11.79	1.16	1113	44	14.87	1.16	-	-	-	-				
15900	830	27.4	5.61	0.90	878	29.1	6.97	1.00	921	30.9	8.35	1.06	964	33.1	9.79	1.10	1056	39.4	12.86	1.14	1141	46.2	16.07	1.15	-	-	-	-				
17100	885	30.7	6.75	0.84	931	32.7	8.21	0.94	972	34.6	9.68	1.01	1012	36.5	11.2	1.06	1096	42.3	14.41	1.11	1180	49.4	17.82	1.13	-	-	-	-				
17400	899	31.6	7.06	0.83	944	33.6	8.54	0.93	985	35.5	10.04	1.00	1024	37.4	11.58	1.05	1106	43.1	14.83	1.10	-	-	-	-	-	-	-	-				
18800	964	36.2	8.64	0.78	1007	38.2	10.24	0.87	1045	40.2	11.84	0.95	1082	42.1	13.49	1.00	1156	47	16.9	1.06	-	-	-	-	-	-	-	-				
19400	992	38.3	9.39	0.75	1034	40.4	11.04	0.85	1072	42.3	12.69	0.92	1108	44.3	14.38	0.98	1178	48.8	17.86	1.05	-	-	-	-	-	-	-	-				
21000	1067	44.2	11.6	0.71	1106	46.4	13.38	0.80	1143	48.5	15.17	0.87	1177	50.5	16.98	0.93	-	-	-	-	-	-	-	-	-	-	-	-				
21800	1105	47.4	12.84	0.68	1143	49.6	14.68	0.78	1178	51.7	16.54	0.85	-	-	-	-	-	-	-	-	-	-	-	-	-	-	-	-				
22600	1143	50.7	14.16	0.67	1179	53	16.07	0.75	-	-	-	-	-	-	-	-	-	-	-	-	-	-	-	-	-	-	-	-				
23400	1180</																															



# BI-36

Max RPM: 1050    Max HP: 25    Shaft size: 1-15/16"



CFM	1/2" SP				1" SP				1-1/2" SP				2" SP				3" SP				4" SP				5" SP						
	RPM	Sone	HP	FEI	RPM	Sone	HP	FEI	RPM	Sone	HP	FEI	RPM	Sone	HP	FEI	RPM	Sone	HP	FEI	RPM	Sone	HP	FEI	RPM	Sone	HP	FEI	RPM	Sone	HP
1200	318	4.8	0.29	1.06	451	9.2	0.75	0.69	553	13.3	1.33	0.53	639	17.2	2	0.45	783	24.3	3.56	0.36	905	31.4	5.37	0.31	1012	38.9	7.41	0.27			
1600	319	4.8	0.32	1.20	451	9.1	0.81	0.79	552	13.3	1.41	0.63	638	17.1	2.11	0.53	782	24.2	3.72	0.43	904	31.3	5.59	0.37	1011	38.7	7.69	0.33			
2000	320	4.8	0.34	1.35	451	9.2	0.86	0.89	552	13.3	1.49	0.71	637	17.1	2.21	0.61	781	24.1	3.88	0.49	903	31.2	5.81	0.43	1010	38.6	7.96	0.38			
2400	321	4.8	0.37	1.45	451	9.2	0.92	0.97	552	13.3	1.57	0.79	637	17.1	2.32	0.68	781	24.1	4.05	0.55	902	31.1	6.03	0.48	1009	38.5	8.23	0.43			
2600	321	4.8	0.39	1.48	452	9.2	0.94	1.02	552	13.3	1.61	0.82	638	17.1	2.38	0.71	781	24.1	4.13	0.58	902	31.1	6.14	0.51	1009	38.4	8.37	0.46			
2800	321	4.8	0.41	1.51	452	9.2	0.97	1.05	553	13.3	1.65	0.85	638	17.1	2.43	0.74	781	24.1	4.21	0.61	902	31.1	6.25	0.53	1009	38.4	8.51	0.48			
3000	321	4.8	0.42	1.57	453	9.2	1	1.08	553	13.3	1.69	0.89	638	17.1	2.48	0.77	781	24.1	4.29	0.63	902	31.1	6.36	0.55	1008	38.3	8.64	0.50			
3200	321	4.8	0.44	1.59	453	9.2	1.03	1.12	554	13.4	1.74	0.91	638	17.1	2.54	0.80	781	24.1	4.37	0.66	902	31	6.47	0.58	1008	38.3	8.78	0.52			
3400	321	4.8	0.46	1.61	453	9.3	1.06	1.14	554	13.4	1.78	0.94	639	17.2	2.59	0.82	781	24.1	4.45	0.68	902	31.1	6.57	0.60	1008	38.3	8.92	0.54			
3600	321	4.8	0.47	1.66	454	9.3	1.09	1.17	554	13.4	1.82	0.97	639	17.2	2.65	0.85	781	24.1	4.53	0.71	902	31.1	6.68	0.62	1008	38.3	9.05	0.56			
3800	321	4.9	0.49	1.68	454	9.3	1.12	1.20	555	13.4	1.86	1.00	639	17.2	2.7	0.87	782	24.2	4.61	0.73	902	31.1	6.78	0.64	1008	38.3	9.18	0.58			
4000	322	4.9	0.51	1.69	454	9.3	1.15	1.23	555	13.5	1.91	1.02	640	17.2	2.76	0.90	782	24.2	4.69	0.75	902	31.1	6.89	0.66	1008	38.3	9.32	0.60			
4500	325	5	0.55	1.76	454	9.3	1.24	1.27	556	13.5	2.02	1.07	641	17.3	2.9	0.95	783	24.3	4.9	0.80	903	31.2	7.16	0.71	1009	38.4	9.65	0.65			
5000	329	5.1	0.6	1.80	454	9.3	1.33	1.31	556	13.5	2.14	1.12	642	17.4	3.05	1.00	784	24.4	5.11	0.85	904	31.3	7.43	0.76	1009	38.5	9.98	0.69			
5500	336	5.3	0.66	1.81	455	9.3	1.41	1.36	556	13.5	2.27	1.16	643	17.4	3.21	1.04	785	24.4	5.32	0.89	905	31.4	7.71	0.80	1010	38.6	10.32	0.73			
6000	345	5.6	0.73	1.79	457	9.4	1.5	1.39	556	13.5	2.4	1.19	642	17.4	3.38	1.07	786	24.5	5.55	0.93	906	31.5	7.99	0.83	1011	38.7	10.67	0.77			
6500	356	6	0.8	1.79	461	9.6	1.59	1.42	557	13.6	2.53	1.22	642	17.4	3.55	1.10	787	24.6	5.78	0.96	907	31.7	8.28	0.87	1012	38.9	11.02	0.80			
7000	367	6.4	0.89	1.75	465	9.8	1.69	1.45	558	13.7	2.66	1.25	642	17.4	3.73	1.13	787	24.6	6.03	0.99	908	31.8	8.58	0.90	1013	39	11.38	0.83			
7100	370	6.5	0.91	1.74	466	9.8	1.71	1.45	559	13.7	2.69	1.26	642	17.4	3.76	1.14	787	24.6	6.08	1.00	908	31.8	8.64	0.91	1014	39.1	11.45	0.84			
7500	379	6.9	0.98	1.72	471	10	1.8	1.46	561	13.8	2.79	1.28	643	17.4	3.9	1.16	787	24.6	6.29	1.02	909	31.9	8.89	0.93	1014	39.2	11.75	0.86			
8000	391	7.3	1.08	1.68	478	10.3	1.92	1.46	565	14	2.93	1.30	644	17.5	4.07	1.18	786	24.6	6.55	1.04	909	31.9	9.22	0.96	1015	39.4	12.13	0.89			
8500	403	7.8	1.19	1.64	488	10.7	2.06	1.46	569	14.3	3.08	1.32	647	17.6	4.24	1.21	787	24.6	6.81	1.06	909	31.9	9.57	0.98	1016	39.5	12.52	0.92			
8900	413	8.2	1.29	1.60	497	11.1	2.18	1.45	573	14.6	3.21	1.33	649	17.8	4.38	1.23	787	24.6	7.02	1.08	908	31.8	9.84	1.00	1016	39.5	12.85	0.93			
9000	416	8.3	1.31	1.60	499	11.2	2.21	1.45	575	14.7	3.24	1.33	650	17.8	4.42	1.23	787	24.6	7.07	1.09	908	31.8	9.91	1.00	1016	39.5	12.93	0.94			
9500	429	8.8	1.44	1.55	510	11.6	2.38	1.43	581	15.1	3.42	1.34	654	18.1	4.61	1.25	788	24.7	7.32	1.11	908	31.8	10.26	1.02	1016	39.4	13.36	0.96			
10000	443	9.5	1.58	1.51	522	12.3	2.55	1.41	590	15.5	3.61	1.34	659	18.5	4.82	1.26	790	24.9	7.57	1.13	908	31.9	10.61	1.04	1015	39.4	13.8	0.98			
10600	461	10.3	1.76	1.46	536	13	2.78	1.39	602	16	3.87	1.33	666	19.1	5.08	1.27	793	25.2	7.89	1.15	909	32	11.03	1.06	1015	39.3	14.32	1.00			
11000	473	10.9	1.89	1.42	546	13.5	2.94	1.37	611	16.2	4.06	1.32	672	19.3	5.28	1.27	796	25.4	8.1	1.16	910	32.1	11.29	1.08	1016	39.4	14.67	1.01			
12000	504	12.5	2.25	1.34	570	14.7	3.36	1.33	634	17.3	4.56	1.30	690	20	5.82	1.27	805	26.2	8.69	1.19	915	32.6	11.97	1.11	1017	39.6	15.53	1.04			
13000	536	14.2	2.66	1.26	595	16.1	3.84	1.28	657	18.6	5.12	1.27	712	21	6.44	1.26	816	27.3	9.35	1.20	922	33.5	12.7	1.14	1021	40.1	16.37	1.08			
14000	569	15.9	3.13	1.19	623	17.6	4.38	1.24	681	19.8	5.72	1.24	735	22.3	7.12	1.24	831	28.1	10.1	1.21	931	34.6	13.5	1.16	1027	41	17.25	1.10			
15000	601	17.8	3.67	1.12	653	19.2	4.98	1.19	705	21.1	6.38	1.21	759	23.7	7.87	1.21	852	29.2	10.96	1.20	942	36	14.39	1.17	1034	42.3	18.2	1.13			
16000	635	19.5	4.26	1.06	683	20.9	5.65	1.14	731	22.6	7.11	1.18	782	25.1	8.67	1.19	874	30.4	11.9	1.19	957	37	15.37	1.17	1044	43.9	19.24	1.14			
16500	651	20.4	4.58	1.04	699	21.8	6.01	1.12	745	23.4	7.51	1.16	794	25.9	9.09	1.18	885	31.1	12.4	1.18	966	37.6	15.92	1.17	1050	45	19.8	1.15			
17000	668	21.3	4.92	1.01	715	22.7	6.39	1.10	759	24.3	7.92	1.14	806	26.6	9.54	1.16	897	32	12.92	1.18	977	38.2	16.49	1.17	-	-	-	-			
17200	675	21.7	5.06	1.00	721	23.1	6.55	1.09	765	24.6	8.09	1.13	811	26.9	9.72	1.16	902	32.3	13.14	1.17	981	38.5	16.72	1.17	-	-	-	-			
18000	701	23.2	5.66	0.96	746	24.5	7.2	1.05	788	26.2	8.8	1.11	832	28.2	10.48	1.14	921	33.7	14.03	1.16	998	39.6	17.71	1.16	-	-	-	-			
19000	735	25.1	6.47	0.91	778	26.6	8.1	1.01	819	28.2	9.77	1.07	858	29.9	11.5	1.11	944	35.4	15.19	1.14	1021	41	19.02	1.15	-	-	-	-			
19400	749	25.9	6.82	0.90	791	27.5	8.47	1.00	831	29	10.17	1.06	870	30.8	11.93	1.10	954	36	15.68	1.13	1030	41.8	19.57	1.15	-	-	-	-			
20000	769	27.2	7.36	0.87	811	28.8	9.07	0.97	849	30.3	10.81	1.04	887	32.1	12.61	1.08	968	37.1	16.44	1.12	1045	43	20.43	1.14	-	-	-	-			
20200	776	27.6	7.55	0.87	818	29.2	9.27	0.97	856	30.8	11.03	1.03	893	32.5	12.85	1.07	973	37.5	16.69	1.12	1050	43.4	20.72	1.14	-	-	-	-			
21000	803	29.4	8.34	0.84	844	31	10.13	0.94	881	32.6	11.95	1.00	917	34.4	13.82	1.05	992	39	17.76	1.10	-	-	-	-	-	-	-	-			
21200	810	29.8	8.54	0.83	850	31.5	10.35	0.93	887	33.1	12.19	1.00	923	34.9	14.07	1.05	997	39.4	18.04	1.10	-	-	-	-	-	-	-	-			
22000	837	31.7	9.41	0.80	877	33.4	11.28	0.90	913	35.1	13.18	0.97	947	36.8	15.12	1.02	1018	41	19.18	1.08	-	-	-	-	-	-	-	-			
22900	868	33.9	10.45	0.78	907	35.8	12.4	0.87	942	37.4	14.36	0.95	975	39.1	16.37	1.00	1041	43	20.54	1.06	-	-	-	-	-	-	-	-			

Grey shaded areas meet or exceed the FEI standards for efficiency in California.

Performance certified is for installation type B: free inlet, ducted outlet. Power rating (BHP) does not include transmission losses. Performance ratings do not include the effect of appurtenances (accessories).

FEI calculated using AMCA 210 data and default motor efficiency without the motor. For complete fan performance please use Delair or consult factory. [www.canarm.com/delair](http://www.canarm.com/delair)



Canarm certifies that the BI Series shown herein are licensed to bear the AMCA Seal. The ratings shown are based on tests and procedures performed in accordance with AMCA Publications 211 and comply with the requirements of the AMCA Certified Ratings Programme.

The AMCA certified ratings seal applies to air performance only. The BI Series shown herein are not approved by AMCA for FEI and FEP