





**909**

Shaft size: 3/4"  
Shaft size: 1"

Max RPM: 2800  
Max RPM: 2800

Max HP: 3  
Max HP: 5

Shaft size: 1-3/16"

Max RPM: 2800

Max HP: 10

CFM	1/4" SP				1/2" SP				3/4" SP				1" SP				1-1/2" SP				2" SP				2-1/2" SP			
	RPM	Sone	HP	FEI	RPM	Sone	HP	FEI	RPM	Sone	HP	FEI	RPM	Sone	HP	FEI	RPM	Sone	HP	FEI	RPM	Sone	HP	FEI	RPM	Sone	HP	FEI
600	539	2.7	0.05	1.95	783	6.2	0.11	1.50	958	9.4	0.17	1.31	1097	12.4	0.23	1.21	1324	17.7	0.37	1.05	1513	22.4	0.52	0.96	1678	26.8	0.68	0.89
700	533	2.6	0.06	1.93	777	6.1	0.12	1.55	961	9.4	0.19	1.33	1108	12.7	0.26	1.21	1339	18.1	0.41	1.06	1530	23	0.57	0.98	1697	27.6	0.74	0.91
800	533	2.6	0.07	1.93	767	5.9	0.13	1.60	956	9.3	0.21	1.34	1110	12.8	0.29	1.21	1351	18.5	0.46	1.06	1545	23.5	0.63	0.98	1714	28.3	0.81	0.92
900	538	2.7	0.08	1.93	758	5.7	0.15	1.57	947	9.1	0.23	1.36	1105	12.6	0.31	1.25	1360	18.8	0.5	1.07	1558	23.9	0.69	0.99	1728	28.9	0.88	0.94
1000	546	2.8	0.1	1.81	754	5.7	0.16	1.62	938	8.9	0.25	1.38	1097	12.4	0.34	1.25	1359	18.7	0.54	1.09	1567	24.2	0.75	0.99	1741	29.4	0.96	0.94
1100	557	3	0.12	1.72	753	5.6	0.19	1.54	929	8.7	0.27	1.40	1088	12.1	0.36	1.29	1354	18.6	0.58	1.10	1570	24.3	0.8	1.01	1751	29.8	1.03	0.95
1200	573	3.2	0.14	1.67	756	5.7	0.21	1.54	924	8.6	0.29	1.42	1079	11.9	0.39	1.30	1346	18.4	0.61	1.13	1567	24.2	0.85	1.03	1756	30	1.1	0.96
1300	592	3.5	0.17	1.55	763	5.8	0.24	1.49	922	8.6	0.33	1.37	1071	11.7	0.42	1.31	1338	18.1	0.65	1.15	1561	24	0.9	1.04	1754	29.9	1.16	0.98
1400	615	3.9	0.2	1.48	772	6	0.28	1.41	923	8.6	0.36	1.37	1067	11.6	0.46	1.29	1328	17.8	0.69	1.16	1554	23.8	0.95	1.06	1749	29.7	1.22	0.99
1500	640	4.3	0.24	1.38	782	6.2	0.31	1.39	928	8.7	0.4	1.34	1065	11.5	0.5	1.29	1319	17.6	0.73	1.18	1545	23.5	1	1.08	1742	29.5	1.29	1.00
1600	667	4.7	0.28	1.31	794	6.5	0.36	1.32	935	8.9	0.45	1.30	1066	11.5	0.55	1.26	1311	17.4	0.78	1.18	1535	23.1	1.05	1.09	1734	29.1	1.35	1.02
1700	694	5.1	0.32	1.26	811	6.8	0.4	1.29	944	9.1	0.5	1.26	1070	11.6	0.6	1.25	1307	17.3	0.84	1.17	1526	22.8	1.11	1.10	1725	28.8	1.41	1.04
1800	724	5.6	0.37	1.20	830	7.1	0.45	1.25	953	9.3	0.56	1.22	1076	11.8	0.67	1.20	1305	17.2	0.9	1.17	1517	22.5	1.17	1.11	1715	28.4	1.48	1.05
1900	753	6.1	0.43	1.13	851	7.6	0.51	1.19	965	9.5	0.62	1.19	1084	12	0.73	1.18	1304	17.2	0.96	1.17	1512	22.3	1.24	1.11	1706	28	1.55	1.06
2000	784	6.7	0.49	1.09	875	8	0.58	1.14	979	9.9	0.68	1.16	1093	12.3	0.8	1.16	1307	17.2	1.04	1.15	1508	22.2	1.31	1.12	1698	27.6	1.63	1.07
2100	816	7.3	0.56	1.04	900	8.6	0.65	1.10	996	10.3	0.75	1.13	1103	12.6	0.87	1.14	1311	17.4	1.13	1.12	1506	22.1	1.4	1.11	1692	27.4	1.71	1.07
2200	847	7.9	0.64	0.99	926	9.1	0.73	1.06	1015	10.8	0.83	1.10	1115	12.9	0.95	1.11	1318	17.5	1.22	1.10	1506	22.1	1.49	1.10	1688	27.2	1.8	1.08
2300	879	8.7	0.72	0.95	953	9.7	0.82	1.01	1037	11.3	0.92	1.06	1129	13.3	1.04	1.08	1326	17.8	1.32	1.08	1508	22.2	1.59	1.09	1685	27.1	1.9	1.07
2400	912	9.5	0.81	0.92	981	10.4	0.91	0.98	1060	11.9	1.01	1.04	1146	13.7	1.13	1.06	1335	18	1.42	1.07	1513	22.4	1.7	1.08	1684	27.1	2.01	1.07
2500	944	10.3	0.91	0.88	1010	11.1	1.01	0.95	1084	12.5	1.12	1.00	1164	14.2	1.24	1.03	1344	18.3	1.53	1.05	1519	22.6	1.82	1.06	1685	27.1	2.13	1.06
2600	977	11.3	1.01	0.86	1040	11.8	1.12	0.92	1109	13.2	1.23	0.97	1185	14.8	1.35	1.01	1354	18.6	1.64	1.03	1526	22.8	1.95	1.04	1688	27.2	2.26	1.05
2700	1010	12.2	1.13	0.82	1070	12.6	1.23	0.89	1135	13.9	1.35	0.94	1207	15.4	1.47	0.98	1367	19	1.76	1.02	1535	23.1	2.09	1.02	1692	27.4	2.41	1.03
2800	1044	13.2	1.25	0.80	1100	13.4	1.36	0.87	1163	14.6	1.48	0.91	1230	16.1	1.6	0.96	1381	19.4	1.88	1.00	1544	23.4	2.23	1.01	1699	27.7	2.56	1.02
2900	1077	14.3	1.38	0.78	1132	14.2	1.49	0.84	1191	15.4	1.61	0.89	1255	16.7	1.74	0.93	1396	19.8	2.02	0.99	1553	23.8	2.37	1.00	1706	28	2.72	1.01
3000	1111	15.2	1.52	0.76	1163	15.1	1.64	0.82	1219	16.2	1.76	0.87	1280	17.4	1.89	0.91	1414	20.3	2.17	0.97	1564	24.1	2.52	0.98	1714	28.3	2.89	0.99

Grey shaded areas meet or exceed the FEI standards for efficiency in California.

FEI calculated using default motor efficiency without the motor.  
For complete fan performance please use Delair or consult factory. [www.canarm.com/delair](http://www.canarm.com/delair)

Performance certified is for installation type B: free inlet, ducted outlet. Power rating (BHP) does not include transmission losses. Performance ratings do not include the effect of appurtenances (accessories).



# 910-8

Shaft size: 3/4"  
Shaft size: 1"

Max RPM: 3000  
Max RPM: 3000

Max HP: 3  
Max HP: 5

Shaft size: 1-3/16"

Max RPM: 3000

Max HP: 10

CFM	1/4" SP				1/2" SP				3/4" SP				1" SP				1-1/2" SP				2" SP				2-1/2" SP			
	RPM	Sone	HP	FEI	RPM	Sone	HP	FEI	RPM	Sone	HP	FEI	RPM	Sone	HP	FEI	RPM	Sone	HP	FEI	RPM	Sone	HP	FEI	RPM	Sone	HP	FEI
700	485	4.7	0.05	2.14	689	8.6	0.09	1.90	855	12.5	0.14	1.68	1001	17.3	0.18	1.62	1241	25.4	0.28	1.46	1437	32.3	0.38	1.38	1602	39.8	0.49	1.31
800	488	4.8	0.06	2.12	688	8.6	0.11	1.81	846	12.2	0.16	1.66	989	16.2	0.21	1.57	1233	24.5	0.32	1.43	1434	32.2	0.43	1.36	1607	40.1	0.55	1.30
900	494	4.9	0.08	1.94	687	8.6	0.13	1.75	843	12.2	0.18	1.65	977	15.8	0.24	1.54	1221	23.3	0.35	1.45	1426	31.5	0.48	1.35	1603	39.8	0.6	1.31
1000	504	5.5	0.09	1.95	686	8.6	0.15	1.71	842	12.1	0.21	1.59	975	15.7	0.27	1.52	1209	22.4	0.39	1.43	1415	30.5	0.53	1.34	1595	39	0.66	1.31
1100	517	5.9	0.11	1.84	688	8.6	0.18	1.61	841	12.1	0.24	1.54	973	15.7	0.3	1.50	1197	22	0.43	1.42	1402	29.5	0.58	1.34	1584	37.8	0.72	1.30
1200	533	6.3	0.14	1.67	694	8.7	0.2	1.60	840	12.1	0.27	1.51	972	15.6	0.34	1.46	1194	21.8	0.48	1.39	1390	28.7	0.63	1.34	1572	36.6	0.79	1.29
1300	552	6.8	0.16	1.63	701	9.1	0.23	1.54	842	12.1	0.31	1.45	971	15.6	0.38	1.42	1192	21.8	0.53	1.37	1381	28.2	0.69	1.32	1559	35.5	0.85	1.29
1400	574	7.4	0.19	1.54	711	9.8	0.26	1.50	846	12.2	0.34	1.44	971	15.6	0.43	1.37	1192	21.7	0.59	1.33	1379	28.1	0.75	1.31	1548	34.8	0.92	1.28
1500	598	8	0.23	1.43	724	10.3	0.3	1.43	852	12.4	0.38	1.40	972	15.6	0.47	1.36	1190	21.7	0.65	1.31	1377	28	0.82	1.29	1543	34.5	1	1.26
1600	623	8.8	0.27	1.35	738	10.9	0.34	1.39	860	12.9	0.42	1.38	976	15.7	0.52	1.33	1189	21.6	0.71	1.28	1376	28	0.89	1.27	1541	34.4	1.08	1.25
1700	650	9.6	0.31	1.30	755	11.4	0.39	1.32	870	13.7	0.47	1.34	981	15.9	0.57	1.31	1189	21.6	0.77	1.27	1375	27.9	0.97	1.25	1539	34.3	1.17	1.23
1800	677	10.4	0.36	1.23	774	12	0.44	1.28	881	14.5	0.53	1.28	989	16.2	0.62	1.29	1190	21.7	0.84	1.25	1374	27.8	1.05	1.23	1538	34.2	1.26	1.22
1900	705	11.3	0.42	1.16	794	12.7	0.49	1.24	895	15	0.59	1.25	998	16.9	0.68	1.26	1193	21.8	0.91	1.23	1373	27.8	1.14	1.20	1538	34.2	1.36	1.20
2000	733	12.3	0.48	1.11	816	13.5	0.56	1.18	911	15.6	0.65	1.22	1008	18	0.75	1.23	1197	22	0.98	1.21	1373	27.8	1.23	1.19	1536	34.1	1.46	1.18
2100	762	13.3	0.54	1.08	840	14.3	0.63	1.14	928	16.2	0.72	1.18	1021	18.7	0.83	1.19	1203	22.2	1.05	1.20	1374	27.9	1.32	1.17	1535	34	1.56	1.17
2200	791	14.3	0.62	1.02	866	15.3	0.7	1.10	947	17	0.8	1.14	1035	19.3	0.91	1.16	1211	22.6	1.14	1.18	1377	28	1.4	1.17	1535	34	1.67	1.16
2300	820	15.4	0.7	0.98	892	16.2	0.78	1.07	967	17.8	0.88	1.11	1050	19.9	1	1.13	1220	23.2	1.23	1.16	1382	28.3	1.5	1.15	1536	34.1	1.78	1.14
2400	849	16.5	0.78	0.96	918	17.2	0.87	1.03	989	18.7	0.97	1.08	1067	20.6	1.09	1.10	1230	24.2	1.33	1.14	1388	28.6	1.6	1.14	1538	34.2	1.9	1.13
2500	879	17.6	0.87	0.93	945	18.4	0.97	0.99	1012	19.6	1.07	1.05	1086	21.3	1.19	1.08	1241	25.4	1.44	1.11	1395	28.9	1.7	1.13	1542	34.4	2.01	1.12
2600	909	18.8	0.97	0.90	973	19.5	1.08	0.96	1036	20.5	1.18	1.01	1105	22	1.3	1.05	1254	25.9	1.56	1.09	1403	29.5	1.82	1.12	1547	34.7	2.13	1.11
2700	939	20	1.08	0.87	1001	20.6	1.19	0.93	1062	21.5	1.3	0.98	1126	22.8	1.41	1.03	1268	26.5	1.68	1.07	1412	30.3	1.95	1.10	1553	35.1	2.25	1.11
2800	969	21.2	1.2	0.84	1029	21.7	1.31	0.90	1088	22.4	1.42	0.96	1148	23.6	1.54	1.00	1284	27.2	1.81	1.05	1423	31.2	2.09	1.08	1560	35.5	2.39	1.09
2900	999	22.3	1.32	0.82	1058	22.8	1.44	0.88	1114	23.4	1.55	0.93	1171	24.5	1.67	0.98	1300	27.9	1.95	1.02	1435	32.2	2.24	1.06	1568	36.3	2.53	1.08
3000	1030	23.4	1.46	0.80	1086	23.9	1.58	0.85	1141	24.5	1.69	0.91	1196	25.5	1.81	0.95	1318	28.8	2.09	1.01	1448	32.9	2.39	1.04	1577	37.2	2.7	1.06

Grey shaded areas meet or exceed the FEI standards for efficiency in California.  
FEI calculated using default motor efficiency without the motor.  
For complete fan performance please use Delair or consult factory. [www.canarm.com/delair](http://www.canarm.com/delair)

Performance certified is for installation type B: free inlet, ducted outlet. Power rating (BHP) does not include transmission losses. Performance ratings do not include the effect of appurtenances (accessories).



# 910

Shaft size: 3/4"  
Shaft size: 1"

Max RPM: 3000  
Max RPM: 3000

Max HP: 3  
Max HP: 5

Shaft size: 1-3/16"

Max RPM: 3000

Max HP: 10

CFM	1/4" SP				1/2" SP				3/4" SP				1" SP				1-1/2" SP				2" SP				2-1/2" SP			
	RPM	Sone	HP	FEI	RPM	Sone	HP	FEI	RPM	Sone	HP	FEI	RPM	Sone	HP	FEI	RPM	Sone	HP	FEI	RPM	Sone	HP	FEI	RPM	Sone	HP	FEI
800	468	5.8	0.06	2.07	687	10.5	0.14	1.49	850	15.7	0.22	1.28	982	20.4	0.3	1.16	1190	26.7	0.48	1.01	1358	33	0.67	0.92	1505	39.9	0.87	0.86
900	470	5.8	0.07	2.05	679	10.1	0.15	1.54	846	15.4	0.24	1.29	982	20.4	0.33	1.17	1201	27.6	0.52	1.02	1371	33.7	0.72	0.94	1519	40.8	0.93	0.88
1000	475	5.4	0.09	1.88	670	9.9	0.16	1.58	840	15	0.25	1.35	979	20.1	0.35	1.20	1203	27.8	0.56	1.04	1383	34.4	0.78	0.95	1533	41.6	1.01	0.89
1100	480	5.6	0.1	1.88	663	10.3	0.18	1.56	832	14.4	0.27	1.37	974	19.6	0.38	1.21	1203	27.8	0.6	1.05	1388	34.9	0.84	0.95	1544	42.3	1.08	0.90
1200	488	6	0.12	1.78	663	10.3	0.2	1.54	823	14	0.29	1.38	966	19	0.4	1.24	1200	27.5	0.64	1.06	1390	35	0.89	0.97	1552	42.7	1.15	0.91
1300	496	6.4	0.13	1.80	666	10.2	0.22	1.53	815	14.7	0.31	1.40	958	18.3	0.43	1.24	1195	27.1	0.68	1.08	1388	34.9	0.94	0.99	1553	42.8	1.21	0.92
1400	506	6.6	0.15	1.73	671	9.9	0.24	1.52	811	14.7	0.34	1.38	949	18.1	0.46	1.25	1189	26.6	0.72	1.09	1385	34.6	0.99	1.00	1553	42.8	1.28	0.93
1500	516	6.7	0.18	1.61	676	9.9	0.27	1.47	813	14.8	0.37	1.37	941	18.9	0.48	1.28	1181	26	0.75	1.12	1380	34.2	1.04	1.01	1551	42.7	1.34	0.95
1600	528	6.9	0.2	1.58	683	10.3	0.3	1.44	816	14.6	0.4	1.36	936	19	0.52	1.27	1173	25.5	0.79	1.13	1374	33.8	1.09	1.03	1547	42.5	1.41	0.96
1700	540	7.1	0.23	1.51	690	10.7	0.33	1.41	821	14.2	0.44	1.33	938	19.1	0.55	1.28	1164	25.1	0.83	1.14	1366	33.4	1.14	1.04	1542	42.1	1.47	0.97
1800	553	7.3	0.26	1.46	698	11.2	0.36	1.39	826	14	0.47	1.33	941	18.9	0.6	1.25	1156	25.7	0.87	1.15	1358	33	1.2	1.05	1535	41.7	1.54	0.98
1900	567	7.5	0.29	1.42	707	11.4	0.4	1.35	832	14.4	0.52	1.29	945	18.5	0.64	1.25	1149	26.3	0.92	1.16	1349	32.5	1.25	1.06	1528	41.3	1.6	1.00
2000	582	7.7	0.33	1.35	717	11.6	0.45	1.29	839	14.9	0.56	1.28	950	18	0.69	1.24	1147	26.2	0.97	1.16	1341	32.3	1.3	1.08	1519	40.8	1.66	1.01
2100	598	8	0.37	1.31	728	11.9	0.49	1.27	847	15.5	0.61	1.25	955	18.1	0.74	1.22	1149	26.3	1.03	1.16	1333	32.5	1.36	1.09	1511	40.2	1.73	1.02
2200	614	8.3	0.41	1.27	739	12.1	0.54	1.24	855	16.1	0.67	1.22	961	18.6	0.8	1.20	1152	26.1	1.09	1.15	1326	32.9	1.42	1.09	1502	39.9	1.79	1.04
2300	631	8.7	0.46	1.22	751	12.4	0.59	1.21	864	16.4	0.72	1.20	968	19.2	0.86	1.18	1156	25.7	1.16	1.14	1325	32.8	1.49	1.10	1494	39.7	1.86	1.05
2400	648	9.2	0.51	1.19	763	12.7	0.65	1.17	873	16.6	0.79	1.16	976	19.8	0.92	1.17	1161	25.3	1.23	1.13	1327	32.9	1.56	1.10	1487	39.9	1.93	1.06
2500	666	9.8	0.56	1.16	776	13	0.71	1.14	884	16.9	0.85	1.15	984	20.5	1	1.14	1166	25.1	1.3	1.13	1330	32.9	1.65	1.09	1481	39.8	2.01	1.06
2600	684	10.4	0.62	1.12	790	13.4	0.77	1.12	895	17.1	0.92	1.12	992	21	1.07	1.12	1171	25.4	1.39	1.11	1333	32.5	1.73	1.09	1482	39.9	2.1	1.06
2700	702	11.2	0.68	1.09	804	13.7	0.84	1.09	906	17.4	1	1.09	1002	21.2	1.15	1.10	1178	25.8	1.47	1.10	1337	32.3	1.82	1.08	1484	40	2.2	1.06
2800	721	11.9	0.75	1.06	819	14.1	0.91	1.07	918	17.7	1.07	1.08	1012	21.5	1.24	1.08	1185	26.3	1.56	1.09	1342	32.3	1.92	1.08	1487	39.9	2.3	1.06
2900	740	12.6	0.82	1.04	835	14.5	0.98	1.06	930	18	1.16	1.05	1022	21.7	1.33	1.06	1192	26.9	1.66	1.07	1347	32.4	2.02	1.07	1490	39.7	2.41	1.05
3000	759	13.4	0.89	1.02	850	14.9	1.06	1.03	943	18.4	1.24	1.04	1033	21.9	1.42	1.04	1200	27.5	1.76	1.06	1353	32.7	2.13	1.06	1494	39.7	2.53	1.05
3100	779	14.2	0.97	0.99	867	15.3	1.15	1.01	956	18.8	1.33	1.02	1044	22.2	1.52	1.03	1208	28.2	1.87	1.05	1359	33	2.24	1.05	1499	39.8	2.65	1.04
3200	798	15	1.06	0.97	883	15.7	1.24	0.99	970	19.2	1.43	1.00	1056	22.5	1.62	1.01	1217	28.6	1.99	1.03	1366	33.3	2.36	1.04	1504	39.9	2.77	1.04
3300	818	15.9	1.15	0.95	900	16.1	1.33	0.98	984	19.6	1.53	0.99	1068	22.8	1.72	1.00	1226	28.8	2.11	1.01	1373	33.8	2.49	1.03	1509	40.1	2.9	1.03
3400	838	16.7	1.25	0.92	918	16.9	1.44	0.95	999	20	1.63	0.97	1080	23.1	1.84	0.98	1236	29.1	2.23	1.00	1381	34.2	2.62	1.02	1515	40.5	3.04	1.02
3500	859	17.6	1.35	0.91	935	17.7	1.54	0.94	1014	20.4	1.75	0.95	1093	23.4	1.95	0.97	1246	29.4	2.37	0.99	1389	34.9	2.77	1.00	1522	40.9	3.19	1.01
3600	879	18.6	1.45	0.89	953	18.6	1.65	0.92	1030	20.8	1.86	0.94	1107	23.7	2.08	0.95	1257	29.7	2.5	0.97	1397	35.7	2.91	0.99	1529	41.3	3.34	1.00
3700	899	19.5	1.57	0.88	971	19.5	1.77	0.91	1046	21.2	1.98	0.93	1121	24	2.2	0.94	1268	30.1	2.64	0.96	1406	36	3.07	0.98	1536	41.8	3.5	0.99
3800	920	20.5	1.69	0.86	990	20.4	1.9	0.89	1062	21.6	2.11	0.91	1135	24.4	2.34	0.93	1279	30.4	2.79	0.95	1415	36.3	3.23	0.97	1544	42.2	3.67	0.98
3900	941	21.4	1.81	0.85	1008	21.3	2.03	0.88	1079	22.1	2.25	0.90	1150	24.8	2.48	0.92	1291	30.7	2.94	0.94	1425	36.7	3.4	0.96	1552	42.7	3.84	0.98
4000	962	22.4	1.94	0.83	1027	22.1	2.16	0.87	1096	22.6	2.39	0.89	1165	25.3	2.62	0.91	1303	31.1	3.1	0.93	1435	37	3.57	0.95	1560	43.5	4.03	0.96

Grey shaded areas meet or exceed the FEI standards for efficiency in California.

FEI calculated using default motor efficiency without the motor.  
For complete fan performance please use Delair or consult factory. [www.canarm.com/delair](http://www.canarm.com/delair)

Performance certified is for installation type B: free inlet, ducted outlet. Power rating (BHP) does not include transmission losses. Performance ratings do not include the effect of appurtenances (accessories).





# 915-10

Shaft size: 1"  
Shaft size: 1-3/16"

Max RPM: 2140  
Max RPM: 2140

Max HP: 5  
Max HP: 10

Shaft size: 1-7/16"  
Shaft size: 1-11/16"

Max RPM: 2140  
Max RPM: 2140

Max HP: 15  
Max HP: 20

CFM	1/4" SP				1/2" SP				3/4" SP				1" SP				1-1/2" SP				2" SP				2-1/2" SP							
	RPM	Sone	HP	FEI	RPM	Sone	HP	FEI	RPM	Sone	HP	FEI	RPM	Sone	HP	FEI	RPM	Sone	HP	FEI	RPM	Sone	HP	FEI	RPM	Sone	HP	FEI	RPM	Sone	HP	FEI
1200	323	4.1	0.08	2.23	466	7.9	0.16	1.75	576	11.1	0.25	1.51	668	14.2	0.35	1.34	820	19.7	0.59	1.12	946	24.6	0.84	1.00	1057	29.1	1.1	0.93	1058	29.1	1.2	0.97
1400	322	4.2	0.09	2.32	462	7.6	0.18	1.80	573	10.9	0.28	1.55	666	14	0.39	1.38	819	19.7	0.64	1.17	946	24.6	0.91	1.05	1058	29.1	1.2	0.97	1058	29.1	1.28	1.02
1600	325	4.2	0.12	2.12	458	7.4	0.21	1.78	568	10.7	0.31	1.59	662	13.8	0.42	1.45	817	19.6	0.68	1.24	946	24.5	0.97	1.11	1058	29.1	1.28	1.02	1058	29.1	1.36	1.07
1800	332	4.6	0.14	2.10	455	7.5	0.23	1.84	564	10.4	0.35	1.59	658	13.6	0.47	1.45	814	19.4	0.73	1.28	944	24.4	1.03	1.16	1057	29.1	1.36	1.07	1057	29	1.44	1.11
2000	345	5.2	0.18	1.91	455	7.5	0.27	1.77	560	10.2	0.39	1.59	653	13.3	0.52	1.46	810	19.2	0.79	1.31	941	24.3	1.1	1.20	1055	29	1.44	1.11	1055	29	1.44	1.11
2200	362	6.1	0.22	1.80	458	7.4	0.32	1.69	558	10.4	0.43	1.60	649	13.1	0.57	1.47	806	18.9	0.86	1.33	938	24.1	1.17	1.23	1053	28.8	1.52	1.15	1053	28.8	1.6	1.18
2400	382	6.8	0.27	1.67	464	7.7	0.37	1.63	557	10.4	0.48	1.59	646	12.9	0.62	1.49	801	18.6	0.93	1.34	933	23.8	1.26	1.25	1050	28.6	1.6	1.18	1050	28.6	1.6	1.18
2600	403	7.5	0.33	1.55	473	8.2	0.43	1.57	559	10.2	0.55	1.53	644	13.2	0.68	1.49	797	18.4	1	1.36	929	23.6	1.35	1.26	1045	28.4	1.71	1.20	1045	28.4	1.71	1.20
2800	424	8.3	0.4	1.43	486	8.8	0.5	1.49	564	10.5	0.62	1.49	644	13.2	0.75	1.47	793	18.2	1.08	1.36	924	23.3	1.44	1.28	1041	28.1	1.82	1.22	1041	28.1	1.82	1.22
3000	445	9	0.48	1.34	502	9.6	0.58	1.42	571	10.8	0.7	1.44	646	12.9	0.84	1.43	790	18.5	1.17	1.36	920	23.1	1.55	1.28	1036	27.8	1.94	1.23	1036	27.8	1.94	1.23
3200	466	9.8	0.56	1.27	521	10.6	0.67	1.35	580	11.3	0.79	1.40	650	13.2	0.94	1.39	789	18.5	1.26	1.36	916	22.9	1.65	1.29	1032	27.6	2.06	1.24	1032	27.6	2.06	1.24
3400	486	10.6	0.66	1.19	541	11.4	0.77	1.29	593	12	0.89	1.35	657	13.5	1.04	1.36	788	18.5	1.37	1.35	913	22.7	1.76	1.30	1028	27.3	2.19	1.24	1028	27.3	2.19	1.24
3600	507	11.5	0.76	1.14	563	12.3	0.89	1.22	609	12.9	1.01	1.29	665	14	1.16	1.32	790	18.5	1.49	1.33	911	23.2	1.88	1.30	1024	27.1	2.32	1.25	1024	27.1	2.32	1.25
3800	528	12.4	0.88	1.08	584	13.3	1.02	1.16	626	13.8	1.14	1.24	677	14.6	1.29	1.28	794	18.2	1.64	1.29	910	23.2	2.01	1.29	1021	26.9	2.46	1.26	1021	26.9	2.46	1.26
4000	548	13.3	1	1.04	605	14.2	1.16	1.11	646	14.8	1.29	1.18	691	15.4	1.43	1.24	799	18.5	1.79	1.27	911	23.2	2.17	1.28	1019	27.5	2.6	1.26	1019	27.5	2.6	1.26
4200	569	14.2	1.14	1.00	625	15.3	1.31	1.06	667	15.8	1.45	1.14	707	16.3	1.59	1.20	805	18.9	1.95	1.24	913	22.7	2.34	1.26	1018	27.5	2.76	1.26	1018	27.5	2.76	1.26
4400	591	15.2	1.29	0.96	646	16.3	1.48	1.02	688	16.9	1.63	1.09	725	17.3	1.77	1.15	814	19.4	2.12	1.22	917	22.9	2.53	1.24	1018	27.5	2.95	1.25	1018	27.5	2.95	1.25
4600	612	16.2	1.46	0.92	666	17.3	1.66	0.98	709	17.9	1.82	1.05	745	18.4	1.96	1.11	825	20	2.31	1.19	922	23.2	2.74	1.21	1020	27.5	3.16	1.23	1020	27.5	3.16	1.23
4800	633	17.3	1.63	0.89	687	18.3	1.85	0.95	730	19.1	2.02	1.01	765	19.4	2.18	1.07	839	20.8	2.52	1.16	928	23.5	2.95	1.19	1022	27	3.39	1.21	1022	27	3.39	1.21
5000	655	18.4	1.82	0.87	708	19.4	2.06	0.92	751	20.1	2.24	0.98	786	20.6	2.41	1.03	854	21.7	2.75	1.13	936	24	3.17	1.17	1027	27.3	3.64	1.19	1027	27.3	3.64	1.19
5200	676	19.5	2.03	0.84	728	20.4	2.28	0.89	772	21.3	2.48	0.94	807	21.8	2.65	1.00	870	22.7	2.99	1.10	947	24.6	3.42	1.15	1033	27.6	3.9	1.17	1033	27.6	3.9	1.17
5400	698	20.6	2.25	0.82	749	21.6	2.51	0.86	792	22.4	2.73	0.92	829	23	2.92	0.97	889	23.7	3.26	1.07	959	25.2	3.68	1.13	1039	28	4.16	1.16	1039	28	4.16	1.16
5500	709	21.1	2.37	0.81	759	22.2	2.64	0.85	802	23	2.86	0.90	839	23.6	3.05	0.96	898	24.2	3.41	1.05	965	25.6	3.82	1.11	1043	28.2	4.3	1.15	1043	28.2	4.3	1.15

Grey shaded areas meet or exceed the FEI standards for efficiency in California.  
FEI calculated using default motor efficiency without the motor.  
For complete fan performance please use Delair or consult factory. [www.canarm.com/delair](http://www.canarm.com/delair)

Performance certified is for installation type B: free inlet, ducted outlet. Power rating (BHP) does not include transmission losses. Performance ratings do not include the effect of appurtenances (accessories).



**915**

Shaft size: 1"  
Shaft size: 1-3/16"

Max RPM: 1800  
Max RPM: 1800

Max HP: 5  
Max HP: 10

Shaft size: 1-7/16"  
Shaft size: 1-11/16"

Max RPM: 1800  
Max RPM: 1800

Max HP: 15  
Max HP: 20

CFM	1/4" SP				1/2" SP				3/4" SP				1" SP				1-1/2" SP				2" SP				2-1/2" SP			
	RPM	Sone	HP	FEI	RPM	Sone	HP	FEI	RPM	Sone	HP	FEI	RPM	Sone	HP	FEI	RPM	Sone	HP	FEI	RPM	Sone	HP	FEI	RPM	Sone	HP	FEI
2000	370	3.8	0.15	2.11	503	7.3	0.26	1.77	625	10.8	0.38	1.58	726	14.5	0.5	1.48	888	21.3	0.74	1.37	1019	27.1	0.97	1.32	1132	31.6	1.2	1.29
2200	376	4	0.18	2.00	506	7.4	0.29	1.77	621	10.6	0.42	1.58	724	14.4	0.55	1.48	890	21.4	0.82	1.36	1024	27.3	1.08	1.30	1139	32	1.34	1.27
2400	384	4.1	0.21	1.93	511	7.6	0.32	1.76	617	10.5	0.46	1.59	720	14.2	0.6	1.49	890	21.4	0.89	1.36	1027	27.4	1.18	1.30	1144	32.3	1.47	1.26
2600	394	4.3	0.24	1.88	517	7.2	0.36	1.73	618	10.5	0.51	1.56	715	13.9	0.66	1.47	888	21.3	0.97	1.36	1028	27.5	1.29	1.29	1147	32.5	1.6	1.25
2800	404	4.6	0.28	1.79	522	7.3	0.41	1.67	622	10.7	0.56	1.55	712	13.8	0.72	1.46	885	21.1	1.05	1.36	1027	27.5	1.39	1.29	1149	32.6	1.73	1.25
3000	415	4.8	0.32	1.73	528	7.5	0.46	1.62	627	10.9	0.61	1.54	713	13.8	0.78	1.46	880	20.8	1.13	1.36	1026	27.4	1.5	1.28	1149	32.6	1.86	1.24
3200	426	5.1	0.37	1.64	535	7.6	0.52	1.56	633	10.4	0.67	1.52	717	14	0.84	1.46	876	20.6	1.22	1.35	1022	27.2	1.6	1.29	1148	32.6	1.99	1.24
3400	438	5.3	0.42	1.59	544	7.8	0.59	1.50	639	10.5	0.75	1.47	723	14.3	0.92	1.43	873	20.4	1.3	1.35	1018	27	1.71	1.28	1147	32.5	2.12	1.24
3600	451	5.5	0.48	1.52	553	8	0.65	1.47	645	10.7	0.82	1.44	729	13.6	1	1.41	872	20.4	1.39	1.35	1013	26.7	1.82	1.28	1143	32.2	2.26	1.24
3800	464	5.8	0.55	1.44	563	8.2	0.73	1.41	652	10.9	0.91	1.40	734	13.8	1.09	1.39	876	20.6	1.49	1.34	1010	26.5	1.93	1.29	1138	32	2.39	1.24
4000	477	6.2	0.62	1.39	574	8.4	0.81	1.37	659	11.1	1	1.36	740	14	1.19	1.36	881	20.8	1.59	1.33	1007	26.3	2.05	1.28	1134	31.7	2.53	1.24
4200	491	6.5	0.7	1.33	584	8.7	0.89	1.34	668	11.4	1.09	1.34	746	14.2	1.29	1.33	886	21.1	1.71	1.31	1008	26.4	2.17	1.28	1130	31.5	2.67	1.24
4400	505	6.9	0.79	1.28	596	9	0.99	1.29	677	11.6	1.2	1.30	753	14.4	1.4	1.31	892	20.1	1.83	1.30	1012	26.6	2.3	1.28	1127	31.3	2.81	1.24
4600	520	7.2	0.88	1.24	607	9.3	1.09	1.26	687	11.9	1.31	1.27	760	14.6	1.53	1.27	898	20.3	1.96	1.28	1016	26.9	2.44	1.27	1126	31.3	2.96	1.24
4800	536	7.6	0.98	1.20	619	9.6	1.19	1.23	697	12.2	1.42	1.24	769	14.9	1.65	1.25	903	20.5	2.1	1.27	1022	27.2	2.59	1.26	1129	31.4	3.12	1.24
5000	552	8	1.09	1.16	632	9.9	1.31	1.20	708	12.5	1.55	1.21	778	15.2	1.79	1.22	909	20.7	2.26	1.24	1028	27.5	2.74	1.25	1133	31.7	3.29	1.23
5200	568	8.5	1.21	1.12	645	10.3	1.44	1.16	719	12.9	1.68	1.18	788	15.6	1.93	1.20	916	20.9	2.42	1.22	1034	26.1	2.91	1.24	1138	32	3.46	1.23
5400	585	9	1.34	1.08	658	10.8	1.57	1.13	730	13.2	1.82	1.16	798	15.9	2.08	1.17	923	21.1	2.59	1.20	1039	26.3	3.1	1.22	1144	32.3	3.65	1.22
5600	602	9.5	1.48	1.05	671	11.2	1.71	1.11	742	13.6	1.97	1.13	808	16.3	2.24	1.15	930	21.4	2.77	1.18	1045	26.5	3.3	1.20	1149	32.6	3.85	1.21
5800	619	10.1	1.63	1.02	685	11.7	1.87	1.07	754	14	2.13	1.11	819	16.7	2.41	1.13	938	21.7	2.96	1.16	1051	26.8	3.5	1.19	1155	31.1	4.06	1.20
6000	636	10.6	1.79	0.99	699	12.2	2.03	1.05	766	14.4	2.3	1.09	830	17.1	2.58	1.11	947	22	3.16	1.14	1057	27	3.72	1.17	1161	31.3	4.29	1.18
6200	654	11.3	1.96	0.96	713	12.8	2.2	1.03	779	14.8	2.48	1.06	841	17.5	2.77	1.09	957	22.3	3.36	1.12	1064	27.3	3.95	1.15	1166	31.5	4.53	1.17
6400	672	11.9	2.14	0.94	728	13.4	2.39	1.00	792	15.3	2.67	1.04	853	17.9	2.97	1.07	966	22.7	3.58	1.11	1071	27.5	4.18	1.14	1172	31.7	4.78	1.16
6600	690	12.5	2.34	0.91	743	13.9	2.59	0.98	805	15.9	2.87	1.02	865	18.3	3.17	1.05	976	23	3.8	1.09	1079	27.8	4.43	1.12	-	-	-	-
6800	708	13.2	2.54	0.89	759	14.5	2.79	0.96	818	16.4	3.08	1.00	877	18.7	3.39	1.03	987	23.4	4.04	1.07	1088	28.1	4.69	1.10	-	-	-	-
7000	726	13.9	2.76	0.87	775	15.2	3.01	0.94	832	17.1	3.31	0.98	889	19.1	3.62	1.02	998	23.8	4.29	1.06	1097	28.4	4.95	1.09	-	-	-	-
7200	744	14.6	2.98	0.86	791	15.9	3.25	0.92	845	17.7	3.54	0.97	902	19.5	3.86	1.00	1009	24.2	4.55	1.04	-	-	-	-	-	-	-	-
7400	763	15.3	3.23	0.84	807	16.6	3.49	0.90	860	18.3	3.79	0.95	915	20.1	4.12	0.98	1020	24.7	4.82	1.03	-	-	-	-	-	-	-	-

Grey shaded areas meet or exceed the FEI standards for efficiency in California.  
 FEI calculated using default motor efficiency without the motor.  
 For complete fan performance please use Delair or consult factory. [www.canarm.com/delair](http://www.canarm.com/delair)

Performance certified is for installation type B: free inlet, ducted outlet. Power rating (BHP) does not include transmission losses. Performance ratings do not include the effect of appurtenances (accessories).



# 918-13

Shaft size: 1-3/16"  
Shaft size: 1-7/16"

Max RPM: 1450  
Max RPM: 1450

Max HP: 10  
Max HP: 15

CFM	1/2" SP				1" SP				1-1/2" SP				2" SP				2-1/2" SP				3" SP				4" SP						
	RPM	Sone	HP	FEI	RPM	Sone	HP	FEI	RPM	Sone	HP	FEI	RPM	Sone	HP	FEI	RPM	Sone	HP	FEI	RPM	Sone	HP	FEI	RPM	Sone	HP	FEI	RPM	Sone	HP
3000	381	6.8	0.43	1.68	560	12.6	0.8	1.41	707	17.7	1.22	1.25	820	22.6	1.64	1.17	916	27.3	2.07	1.12	1000	31.8	2.51	1.08	1146	41	3.43	1.02			
3500	385	6.7	0.56	1.57	539	12.9	0.93	1.43	694	17.4	1.41	1.27	816	22.5	1.9	1.18	917	27.3	2.38	1.14	1005	31.9	2.88	1.10	1156	41.5	3.9	1.04			
4000	391	6.6	0.71	1.49	538	13	1.11	1.41	670	17.2	1.58	1.31	803	22.1	2.15	1.21	911	27.1	2.71	1.15	1003	31.9	3.26	1.11	1160	41.6	4.39	1.06			
4500	403	6.8	0.91	1.38	542	12.8	1.34	1.35	658	18.1	1.81	1.31	780	21.5	2.38	1.24	897	26.6	3.02	1.17	996	31.6	3.65	1.12	1160	41.6	4.9	1.07			
5000	425	7.2	1.17	1.26	546	12.6	1.6	1.30	659	18	2.11	1.28	761	22.7	2.65	1.26	873	25.9	3.31	1.20	979	31	4.02	1.15	-	-	-	-			
5500	450	7.8	1.48	1.16	552	12.4	1.91	1.25	664	17.7	2.46	1.24	760	22.7	3.02	1.24	853	27.2	3.64	1.22	955	30.2	4.37	1.17	-	-	-	-			
6000	477	8.6	1.85	1.07	560	12.6	2.27	1.19	667	17.5	2.84	1.21	763	22.5	3.45	1.21	850	27.5	4.08	1.21	936	31.6	4.76	1.19	-	-	-	-			
6500	504	9.5	2.28	0.99	574	13	2.69	1.13	673	17.1	3.27	1.18	767	22.3	3.93	1.18	852	27.3	4.59	1.19	-	-	-	-	-	-	-	-			
7000	530	10.6	2.75	0.94	597	13.5	3.22	1.06	679	17.1	3.77	1.13	771	22	4.45	1.15	-	-	-	-	-	-	-	-	-	-	-	-			
7500	555	11.5	3.27	0.90	622	14	3.83	1.00	690	17.3	4.34	1.09	-	-	-	-	-	-	-	-	-	-	-	-	-	-	-				
8000	580	12.5	3.84	0.86	648	14.6	4.51	0.95	-	-	-	-	-	-	-	-	-	-	-	-	-	-	-	-	-	-	-				
8500	605	13.4	4.47	0.83	-	-	-	-	-	-	-	-	-	-	-	-	-	-	-	-	-	-	-	-	-	-	-				
9000	-	-	-	-	-	-	-	-	-	-	-	-	-	-	-	-	-	-	-	-	-	-	-	-	-	-	-				

# 918

Shaft size: 1-3/16"  
Shaft size: 1-7/16"

Max RPM: 1450  
Max RPM: 1450

Max HP: 10  
Max HP: 15

Shaft size: 1-11/16"

Max RPM: 1450

Max HP: 20

CFM	1/2" SP				1" SP				1-1/2" SP				2" SP				2-1/2" SP				3" SP				4" SP						
	RPM	Sone	HP	FEI	RPM	Sone	HP	FEI	RPM	Sone	HP	FEI	RPM	Sone	HP	FEI	RPM	Sone	HP	FEI	RPM	Sone	HP	FEI	RPM	Sone	HP	FEI	RPM	Sone	HP
4000	395	6.3	0.58	1.67	568	12	1.05	1.42	731	18.1	1.79	1.13	855	23.6	2.51	1.02	956	28.8	3.21	0.96	1045	33.9	3.92	0.92	1199	44	5.37	0.86			
4500	402	6.5	0.72	1.57	556	11.5	1.16	1.46	713	17.3	1.88	1.22	848	23.2	2.72	1.06	956	28.7	3.52	0.98	1048	34	4.31	0.94	1206	44.6	5.91	0.88			
5000	411	6.7	0.88	1.49	554	11.5	1.34	1.44	691	16.3	1.95	1.32	832	22.4	2.85	1.13	949	28.4	3.79	1.02	1046	33.9	4.68	0.96	1210	44.9	6.44	0.90			
5500	423	7.1	1.08	1.39	557	11.6	1.57	1.39	681	16	2.13	1.34	810	21.5	2.95	1.21	933	27.5	3.96	1.08	1039	33.4	4.99	1.00	1210	44.9	6.94	0.92			
6000	435	7.5	1.29	1.32	563	11.8	1.82	1.34	679	15.9	2.4	1.33	790	20.7	3.07	1.28	913	26.4	4.08	1.15	1023	32.4	5.19	1.05	1206	44.6	7.42	0.94			
6500	448	8.2	1.52	1.27	571	12.2	2.12	1.28	680	15.9	2.71	1.30	785	20.4	3.38	1.28	890	25.2	4.2	1.22	1003	31.2	5.35	1.12	1196	43.8	7.77	0.98			
7000	462	9	1.79	1.21	581	12.6	2.45	1.23	685	16.1	3.07	1.26	784	20.4	3.75	1.26	880	24.8	4.51	1.24	980	29.9	5.48	1.18	1179	42.5	8.03	1.03			
7500	476	9.8	2.09	1.16	592	13	2.82	1.19	691	16.3	3.48	1.22	786	20.4	4.17	1.24	877	24.6	4.93	1.24	966	29.1	5.77	1.22	1159	40.9	8.23	1.08			
8000	492	10.6	2.42	1.12	604	13.5	3.23	1.14	700	16.7	3.93	1.18	790	20.6	4.64	1.21	877	24.6	5.41	1.22	962	28.9	6.25	1.22	1136	39.2	8.41	1.14			
8500	509	11.4	2.79	1.08	616	14	3.66	1.11	710	17.1	4.43	1.15	796	20.9	5.17	1.18	879	24.7	5.96	1.20	960	28.8	6.8	1.20	1118	38	8.71	1.18			
9000	526	12.3	3.21	1.04	628	14.8	4.12	1.07	721	17.6	4.97	1.11	804	21.2	5.75	1.15	884	24.9	6.56	1.18	961	28.9	7.41	1.19	1112	37.6	9.31	1.18			
9500	543	13.2	3.66	1.01	642	15.6	4.63	1.04	733	18.2	5.56	1.08	813	21.6	6.39	1.12	890	25.2	7.23	1.15	965	29.1	8.1	1.17	1109	37.5	9.99	1.18			
10000	562	14.2	4.16	0.98	656	16.5	5.18	1.02	745	18.7	6.18	1.05	823	22.1	7.07	1.09	898	25.6	7.95	1.12	970	29.3	8.84	1.15	-	-	-	-			
10500	580	15.2	4.7	0.95	671	17.4	5.77	0.99	757	19.5	6.84	1.03	835	22.6	7.81	1.06	907	26.1	8.73	1.09	976	29.7	9.65	1.12	-	-	-	-			
11000	599	16.1	5.3	0.92	686	18.3	6.42	0.97	769	20.4	7.53	1.00	847	23.2	8.61	1.03	917	26.6	9.57	1.07	-	-	-	-	-	-	-	-			
11500	619	17	5.94	0.90	702	19.1	7.12	0.95	782	21.4	8.29	0.98	859	23.8	9.44	1.01	-	-	-	-	-	-	-	-	-	-	-	-			
12000	638	18	6.65	0.88	719	20.2	7.87	0.93	796	22.4	9.09	0.96	-	-	-	-	-	-	-	-	-	-	-	-	-	-	-	-			

Grey shaded areas meet or exceed the FEI standards for efficiency in California.  
FEI calculated using default motor efficiency without the motor.  
For complete fan performance please use Delair or consult factory. [www.canarm.com/delair](http://www.canarm.com/delair)

Performance certified is for installation type B: free inlet, ducted outlet. Power rating (BHP) does not include transmission losses. Performance ratings do not include the effect of appurtenances (accessories).





# 920-18

Shaft size: 1-3/16"  
Shaft size: 1-7/16"

Max RPM: 1325  
Max RPM: 1325

Max HP: 10  
Max HP: 15

Shaft size: 1-11/16"

Max RPM: 1325

Max HP: 20

CFM	1/2" SP				1" SP				1-1/2" SP				2" SP				2-1/2" SP				3" SP				4" SP			
	RPM	Sone	HP	FEI	RPM	Sone	HP	FEI	RPM	Sone	HP	FEI	RPM	Sone	HP	FEI	RPM	Sone	HP	FEI	RPM	Sone	HP	FEI	RPM	Sone	HP	FEI
5500	379	8	0.91	1.48	530	14.8	1.49	1.37	657	23.4	2.17	1.26	769	31.1	2.9	1.18	868	37.8	3.67	1.12	957	46.1	4.46	1.08	1110	64.6	6.15	1.01
6000	386	8.2	1.06	1.42	528	14.8	1.67	1.35	653	23.2	2.38	1.26	763	30.8	3.16	1.19	862	37.5	3.96	1.14	951	45.7	4.8	1.10	1107	64.3	6.57	1.03
6500	393	8.3	1.23	1.36	529	14.8	1.9	1.31	650	23	2.61	1.26	758	30.6	3.42	1.20	855	37.2	4.28	1.15	945	45.3	5.16	1.11	1103	63.9	7	1.05
7000	401	8.5	1.42	1.31	530	14.9	2.15	1.27	648	22.9	2.87	1.25	754	30.5	3.71	1.20	849	37	4.6	1.16	939	44.8	5.53	1.12	1098	63.4	7.46	1.07
7500	410	8.8	1.63	1.26	534	15	2.42	1.23	647	22.9	3.17	1.23	751	30.4	4.02	1.20	845	36.8	4.94	1.16	932	44.3	5.92	1.13	1092	62.8	7.94	1.08
8000	419	9.1	1.87	1.21	539	15.2	2.7	1.20	648	22.9	3.52	1.20	748	30.3	4.36	1.19	842	36.6	5.31	1.17	928	44	6.32	1.14	1085	62.2	8.43	1.09
8500	429	9.4	2.13	1.16	546	15.5	3.02	1.16	649	23	3.89	1.17	747	30.3	4.75	1.18	839	36.5	5.71	1.16	924	43.7	6.74	1.14	1079	61.6	8.95	1.09
9000	440	9.8	2.43	1.11	553	15.8	3.35	1.13	652	23.2	4.29	1.14	747	30.3	5.19	1.15	837	36.4	6.15	1.15	921	43.5	7.2	1.14	1073	61.1	9.47	1.10
9500	452	10.2	2.76	1.07	561	16.1	3.72	1.10	657	23.4	4.71	1.12	749	30.3	5.67	1.13	836	36.4	6.63	1.14	918	43.3	7.7	1.13	1069	60.7	10.02	1.10
10000	464	10.7	3.11	1.03	569	16.5	4.11	1.07	663	23.7	5.15	1.09	751	30.4	6.18	1.11	836	36.4	7.19	1.12	916	43.2	8.24	1.13	1066	60.4	10.6	1.11
10500	477	11.3	3.51	0.99	577	17	4.53	1.05	670	24.1	5.63	1.07	754	30.5	6.72	1.09	837	36.4	7.78	1.10	915	43.1	8.84	1.11	1062	60.1	11.23	1.11
11000	490	11.8	3.93	0.95	587	17.6	4.98	1.02	677	24.5	6.14	1.05	759	30.7	7.28	1.07	839	36.5	8.4	1.08	915	43.1	9.51	1.10	1060	59.9	11.89	1.10
11500	503	12.5	4.39	0.92	596	18.2	5.47	0.99	685	25	6.68	1.02	765	30.9	7.88	1.04	842	36.6	9.06	1.06	916	43.2	10.22	1.08	1058	59.7	12.61	1.10
12000	517	13.3	4.88	0.90	607	18.8	6.01	0.97	693	25.5	7.25	1.00	772	31.2	8.51	1.03	846	36.8	9.75	1.04	918	43.3	10.97	1.06	1057	59.6	13.4	1.09
12500	530	14.1	5.4	0.87	618	19.5	6.59	0.94	701	26	7.86	0.98	779	31.5	9.17	1.01	851	37.1	10.47	1.03	921	43.5	11.76	1.04	1057	59.6	14.27	1.07
13000	544	14.9	5.97	0.85	629	20.2	7.21	0.92	710	26.5	8.5	0.96	787	31.8	9.88	0.99	858	37.3	11.23	1.01	925	43.8	12.57	1.03	-	-	-	-
13100	547	15.1	6.09	0.84	632	20.3	7.34	0.91	712	26.6	8.64	0.96	788	31.8	10.02	0.99	859	37.4	11.38	1.01	926	43.9	12.74	1.03	-	-	-	-
13200	550	15.3	6.21	0.84	634	20.5	7.48	0.91	713	26.6	8.77	0.96	790	31.9	10.17	0.98	860	37.4	11.54	1.00	927	44	12.91	1.02	-	-	-	-
13300	553	15.4	6.33	0.83	636	20.6	7.61	0.91	715	26.7	8.91	0.95	792	32	10.32	0.98	862	37.5	11.7	1.00	928	44	13.08	1.02	-	-	-	-
13400	556	15.6	6.46	0.83	639	20.8	7.75	0.90	717	26.8	9.05	0.95	793	32	10.47	0.98	863	37.6	11.86	1.00	930	44.1	13.25	1.02	-	-	-	-
13500	558	15.8	6.58	0.83	641	21	7.88	0.90	719	26.9	9.19	0.95	795	32.1	10.62	0.97	864	37.6	12.02	1.00	931	44.2	13.42	1.01	-	-	-	-
13600	561	16	6.71	0.82	644	21.1	8.02	0.89	721	27	9.33	0.94	796	32.2	10.77	0.97	866	37.7	12.19	0.99	932	44.3	13.6	1.01	-	-	-	-
13700	564	16.2	6.84	0.82	646	21.3	8.16	0.89	723	27.1	9.48	0.94	798	32.2	10.92	0.97	867	37.7	12.35	0.99	933	44.4	13.77	1.01	-	-	-	-
13800	567	16.4	6.97	0.81	648	21.4	8.31	0.88	725	27.2	9.63	0.93	799	32.3	11.08	0.96	869	37.8	12.52	0.99	934	44.4	13.95	1.00	-	-	-	-
13900	570	16.6	7.1	0.81	651	21.6	8.45	0.88	727	27.3	9.77	0.93	801	32.3	11.24	0.96	870	37.9	12.69	0.98	935	44.5	14.13	1.00	-	-	-	-
14000	573	16.8	7.23	0.81	653	21.7	8.6	0.87	729	27.4	9.92	0.93	803	32.4	11.39	0.96	871	37.9	12.86	0.98	936	44.6	14.31	1.00	-	-	-	-
14500	587	17.9	7.93	0.79	666	22.6	9.36	0.85	739	27.9	10.71	0.91	811	32.9	12.21	0.94	879	38.3	13.74	0.96	-	-	-	-	-	-	-	-
15000	602	19	8.67	0.77	679	23.4	10.16	0.84	750	28.5	11.55	0.89	820	33.4	13.07	0.93	887	38.8	14.67	0.95	-	-	-	-	-	-	-	-

Grey shaded areas meet or exceed the FEI standards for efficiency in California.

FEI calculated using default motor efficiency without the motor.  
For complete fan performance please use Delair or consult factory. [www.canarm.com/delair](http://www.canarm.com/delair)

Performance certified is for installation type B: free inlet, ducted outlet. Power rating (BHP) does not include transmission losses. Performance ratings do not include the effect of appurtenances (accessories).



# 920

Shaft size: 1-3/16"  
 Shaft size: 1-7/16"  
 Shaft size: 1-11/16"

Max RPM: 1325  
 Max RPM: 1325  
 Max RPM: 1325

Max HP: 10  
 Max HP: 15  
 Max HP: 20

Shaft size: 1-15/16"  
 Shaft size: 2-3/16"

Max RPM: 1325  
 Max RPM: 1325

Max HP: 25  
 Max HP: 40

CFM	1/2" SP				1" SP				1-1/2" SP				2" SP				2-1/2" SP				3" SP				4" SP						
	RPM	Sone	HP	FEI	RPM	Sone	HP	FEI	RPM	Sone	HP	FEI	RPM	Sone	HP	FEI	RPM	Sone	HP	FEI	RPM	Sone	HP	FEI	RPM	Sone	HP	FEI	RPM	Sone	HP
4000	360	7.3	0.55	1.65	518	14.1	1.11	1.30	637	22.2	1.73	1.14	733	29.5	2.38	1.04	814	34.8	3.05	0.98	885	40	3.77	0.93	1010	53	5.28	0.86			
5000	364	7.5	0.72	1.62	511	13.6	1.36	1.34	634	22	2.08	1.18	735	29.7	2.83	1.10	822	35.6	3.62	1.03	899	41.7	4.44	0.99	1028	55.9	6.13	0.92			
6000	378	7.9	0.98	1.50	510	13.5	1.65	1.35	627	21.3	2.45	1.22	731	29.4	3.31	1.13	821	35.5	4.2	1.07	901	41.8	5.12	1.03	1040	57.6	7.04	0.96			
7000	397	8.5	1.32	1.36	514	13.8	2.01	1.32	624	20.9	2.87	1.23	724	28.7	3.81	1.16	815	35	4.8	1.10	897	41.5	5.83	1.06	1040	57.7	7.95	1.00			
8000	420	9.4	1.76	1.23	526	14.5	2.49	1.26	626	21.2	3.36	1.23	721	28.4	4.36	1.18	808	34.2	5.44	1.12	891	40.6	6.56	1.08	1036	57.2	8.89	1.02			
9000	445	10.6	2.3	1.12	544	15.6	3.08	1.19	634	21.9	3.97	1.20	722	28.5	5.01	1.17	806	34	6.14	1.14	884	39.8	7.34	1.10	1030	56.2	9.87	1.05			
10000	472	12.2	2.96	1.03	564	16.9	3.81	1.11	648	22.9	4.73	1.15	728	29.1	5.77	1.16	807	34.1	6.94	1.14	883	39.7	8.2	1.11	1023	54.9	10.89	1.06			
11000	501	14	3.75	0.95	587	18.5	4.67	1.04	665	24.3	5.64	1.10	740	29.9	6.7	1.12	812	34.7	7.88	1.13	884	39.9	9.17	1.11	1019	54.2	11.98	1.08			
12000	530	16.1	4.65	0.88	611	20.5	5.68	0.98	686	26	6.7	1.04	756	30.9	7.81	1.08	823	35.6	9	1.10	890	40.5	10.29	1.10	1020	54.2	13.19	1.08			
13000	561	18.7	5.7	0.83	637	22.8	6.85	0.92	708	27.6	7.93	0.99	774	32.1	9.09	1.04	838	36.7	10.31	1.07	900	41.7	11.61	1.08	1022	54.8	14.55	1.08			
14000	592	21.3	6.91	0.78	664	25.4	8.18	0.87	732	29.5	9.34	0.94	795	33.5	10.54	0.99	855	38	11.81	1.03	914	43.1	13.16	1.05	-	-	-	-			
15000	624	24.1	8.3	0.74	693	28.3	9.68	0.82	757	31.6	10.94	0.89	817	35	12.19	0.95	875	39.4	13.51	0.99	931	44.9	14.9	1.02	-	-	-	-			
16000	656	27.5	9.87	0.71	722	30.9	11.36	0.79	783	33.9	12.73	0.85	841	37.2	14.05	0.91	-	-	-	-	-	-	-	-	-	-	-	-			
17000	689	31.1	11.64	0.68	751	33.5	13.22	0.75	810	36.4	14.72	0.82	-	-	-	-	-	-	-	-	-	-	-	-	-	-	-	-			
18000	722	34.3	13.62	0.65	-	-	-	-	-	-	-	-	-	-	-	-	-	-	-	-	-	-	-	-	-	-	-	-			

# 922

Shaft size: 1-3/16"  
 Shaft size: 1-7/16"  
 Shaft size: 1-11/16"

Max RPM: 1225  
 Max RPM: 1225  
 Max RPM: 1225

Max HP: 10  
 Max HP: 15  
 Max HP: 25

Shaft size: 1-15/16"  
 Shaft size: 2-3/16"

Max RPM: 1225  
 Max RPM: 1225

Max HP: 30  
 Max HP: 40

CFM	1/2" SP				1" SP				1-1/2" SP				2" SP				2-1/2" SP				3" SP				4" SP						
	RPM	Sone	HP	FEI	RPM	Sone	HP	FEI	RPM	Sone	HP	FEI	RPM	Sone	HP	FEI	RPM	Sone	HP	FEI	RPM	Sone	HP	FEI	RPM	Sone	HP	FEI	RPM	Sone	HP
5000	330	7.6	0.65	1.73	470	14.1	1.31	1.36	585	21.6	2.07	1.17	679	28.2	2.87	1.07	760	33.5	3.68	1.01	832	39.1	4.51	0.96	957	50.7	6.22	0.90			
6000	337	8.2	0.84	1.66	465	14.9	1.53	1.41	577	20.3	2.37	1.23	674	27.2	3.28	1.12	758	33	4.23	1.05	832	39.1	5.19	1.00	962	51.9	7.16	0.94			
7000	348	9.3	1.09	1.54	466	13.6	1.81	1.41	570	19.4	2.68	1.28	665	25.8	3.68	1.17	751	31.7	4.73	1.10	828	38	5.82	1.04	961	51.8	8.05	0.97			
8000	361	11	1.41	1.42	472	14.4	2.18	1.37	569	21.2	3.06	1.30	659	24.8	4.09	1.22	742	30.3	5.22	1.14	820	36.3	6.42	1.09	956	50.4	8.89	1.01			
9000	377	12.2	1.78	1.32	481	15.6	2.62	1.32	573	19.8	3.54	1.29	657	27.2	4.59	1.23	736	29.2	5.75	1.18	811	34.6	7.01	1.13	949	48.5	9.69	1.04			
10000	394	13.6	2.23	1.23	493	17.4	3.15	1.25	580	20.8	4.13	1.25	660	25	5.19	1.23	735	32	6.37	1.20	806	37.3	7.66	1.16	940	46.3	10.48	1.08			
11000	412	15.2	2.76	1.14	507	19.5	3.77	1.19	589	22.4	4.8	1.21	665	25.8	5.91	1.21	737	29.3	7.1	1.20	805	37.2	8.41	1.17	933	44.5	11.3	1.11			
12000	432	17	3.38	1.07	521	21.3	4.47	1.13	601	24.3	5.58	1.17	674	27.2	6.74	1.18	742	30.2	7.97	1.18	807	33.8	9.29	1.17	930	49	12.23	1.13			
13000	453	18.9	4.09	1.00	537	22.9	5.27	1.07	614	26.6	6.47	1.12	684	28.9	7.69	1.14	749	31.5	8.97	1.16	812	34.7	10.32	1.16	930	49	13.26	1.14			
14000	475	20.8	4.91	0.94	554	24.7	6.17	1.02	628	29.1	7.46	1.07	696	31	8.76	1.11	759	33.2	10.1	1.13	819	36.2	11.49	1.14	933	44.4	14.49	1.14			
15000	498	22.9	5.85	0.89	573	26.7	7.19	0.98	643	30.8	8.56	1.03	709	33.4	9.95	1.07	770	35.3	11.35	1.10	828	38.1	12.8	1.11	-	-	-	-			
16000	521	25	6.9	0.85	592	28.8	8.33	0.93	659	32.6	9.78	0.99	723	36.3	11.26	1.03	782	37.9	12.74	1.06	838	40.4	14.25	1.09	-	-	-	-			
17000	545	27.3	8.09	0.81	612	31	9.59	0.90	677	34.6	11.13	0.95	738	38.2	12.69	1.00	796	41	14.27	1.03	-	-	-	-	-	-	-	-			
18000	569	29.7	9.41	0.77	633	33.4	11	0.86	695	36.7	12.62	0.92	754	40.2	14.26	0.97	-	-	-	-	-	-	-	-	-	-	-	-			
19000	594	32.2	10.88	0.74	655	36	12.55	0.83	714	39.1	14.25	0.89	-	-	-	-	-	-	-	-	-	-	-	-	-	-	-	-			
20000	619	35	12.5	0.72	677	38.3	14.25	0.80	-	-	-	-	-	-	-	-	-	-	-	-	-	-	-	-	-	-	-	-			

Grey shaded areas meet or exceed the FEI standards for efficiency in California.  
 FEI calculated using default motor efficiency without the motor.  
 For complete fan performance please use Delair or consult factory. [www.canarm.com/delair](http://www.canarm.com/delair)

Performance certified is for installation type B: free inlet, ducted outlet. Power rating (BHP) does not include transmission losses. Performance ratings do not include the effect of appurtenances (accessories).



925

Shaft size: 1-3/16"
Shaft size: 1-7/16"
Shaft size: 1-11/16"

Max RPM: 1090
Max RPM: 1090
Max RPM: 1090

Max HP: 10
Max HP: 15
Max HP: 25

Shaft size: 1-15/16"
Shaft size: 2-3/16"

Max RPM: 1090
Max RPM: 1090

Max HP: 30
Max HP: 40

Table with 26 columns (CFM, 1/2" SP, 1" SP, 1-1/2" SP, 2" SP, 2-1/2" SP, 3" SP, 4" SP) and 20 rows of performance data.

927

Shaft size: 1-11/16"
Shaft size: 2-7/16"

Max RPM: 900
Max RPM: 900

Max HP: 25
Max HP: 50

Table with 26 columns (CFM, 1/2" SP, 1" SP, 1-1/2" SP, 2" SP, 2-1/2" SP, 3" SP, 4" SP) and 20 rows of performance data.

Grey shaded areas meet or exceed the FEI standards for efficiency in California.
FEI calculated using default motor efficiency without the motor.
For complete fan performance please use Delair or consult factory. www.canarm.com/delair

Performance certified is for installation type B: free inlet, ducted outlet. Power rating (BHP) does not include transmission losses. Performance ratings do not include the effect of appurtenances (accessories).



**930**

Shaft size: 1-11/16"  
Shaft size: 2-7/16"

Max RPM: 830  
Max RPM: 830

Max HP: 30  
Max HP: 50

Shaft size: 2-11/16"

Max RPM: 830

Max HP: 60

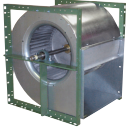


CFM	1/2" SP				1" SP				1-1/2" SP				2" SP				2-1/2" SP				3" SP				4" SP						
	RPM	Sone	HP	FEI	RPM	Sone	HP	FEI	RPM	Sone	HP	FEI	RPM	Sone	HP	FEI	RPM	Sone	HP	FEI	RPM	Sone	HP	FEI	RPM	Sone	HP	FEI	RPM	Sone	HP
20000	265	15.9	4.27	1.32	333	18.7	6.15	1.31	390	22.8	8.1	1.29	446	29.7	10.21	1.26	503	35.7	12.71	1.21	558	41.8	15.45	1.15	655	54.9	21.23	1.07			
21000	271	16.9	4.74	1.28	338	19.7	6.72	1.28	393	23.4	8.73	1.28	447	29.4	10.88	1.26	501	35.4	13.32	1.22	554	41.1	16.09	1.17	652	53.9	22.09	1.08			
22000	277	18.1	5.25	1.25	343	20.7	7.32	1.25	396	24.1	9.41	1.26	448	28.9	11.61	1.25	499	36.5	13.99	1.23	551	40.4	16.77	1.18	648	52.7	22.89	1.10			
23000	283	19.3	5.8	1.21	348	21.8	7.97	1.23	401	25	10.13	1.24	451	29.4	12.39	1.24	500	36.3	14.8	1.22	549	40.1	17.5	1.19	644	51.7	23.71	1.12			
24000	289	20.5	6.4	1.18	353	22.8	8.65	1.20	405	26	10.9	1.22	453	30	13.22	1.22	501	35.6	15.67	1.22	547	41.1	18.3	1.20	641	50.8	24.55	1.13			
25000	296	21.7	7.04	1.14	358	23.8	9.38	1.18	410	27	11.72	1.20	456	30.7	14.11	1.21	502	35.5	16.61	1.21	547	41.1	19.26	1.20	638	50	25.44	1.14			
26000	303	22.8	7.73	1.11	363	24.9	10.14	1.16	415	28.1	12.59	1.18	460	31.6	15.05	1.19	504	36	17.61	1.20	548	40.5	20.29	1.19	635	49.3	26.39	1.16			
27000	309	24.1	8.46	1.09	368	26	10.95	1.13	420	29.2	13.51	1.16	465	32.6	16.04	1.18	507	36.5	18.66	1.19	549	40.1	21.39	1.19	633	49.7	27.4	1.16			
28000	316	25.4	9.24	1.06	374	27.1	11.81	1.11	426	30.4	14.48	1.14	469	33.6	17.09	1.16	510	37.2	19.78	1.17	552	40.5	22.56	1.18	632	50.5	28.52	1.17			
29000	323	26.6	10.08	1.04	379	28.2	12.72	1.09	431	31.5	15.49	1.12	474	34.8	18.19	1.15	514	38	20.95	1.16	554	41	23.79	1.17	632	50.3	29.82	1.17			
30000	330	28	10.96	1.01	385	29.5	13.69	1.07	436	32.7	16.55	1.10	479	36	19.36	1.13	519	39	22.18	1.15	557	41.7	25.09	1.16	633	49.7	31.2	1.16			
31000	337	29.3	11.9	0.99	391	30.8	14.72	1.05	441	33.8	17.65	1.09	485	37.3	20.57	1.11	523	40	23.48	1.14	560	42.5	26.45	1.15	634	49.2	32.67	1.16			
32000	344	30.7	12.89	0.97	397	32.4	15.81	1.03	446	35	18.81	1.07	490	38.6	21.85	1.10	528	41	24.84	1.12	565	43.4	27.88	1.14	636	49.6	34.2	1.15			
33000	352	32.2	13.94	0.95	403	34	16.96	1.02	451	36.2	20.03	1.06	495	39.9	23.19	1.08	533	42.1	26.26	1.11	569	44.5	29.37	1.13	638	50.2	35.82	1.14			
34000	359	33.9	15.06	0.93	410	35.5	18.17	1.00	456	37.4	21.31	1.04	500	41	24.56	1.07	539	43.3	27.74	1.09	574	45.6	30.93	1.11	641	50.9	37.51	1.14			
35000	366	35.5	16.23	0.92	416	37	19.44	0.98	462	38.7	22.65	1.03	505	42.1	25.99	1.06	544	44.6	29.29	1.08	579	46.8	32.56	1.10	644	51.8	39.27	1.13			
36000	374	37.2	17.47	0.90	423	38.5	20.78	0.97	467	40.1	24.06	1.01	510	43.2	27.49	1.04	549	45.9	30.9	1.07	584	48.1	34.25	1.09	648	52.7	41.11	1.12			
37000	382	38.9	18.78	0.89	430	40.2	22.18	0.95	473	41.6	25.55	1.00	515	44.5	29.04	1.03	554	47.2	32.58	1.06	589	49.4	36.02	1.08	652	54	43.02	1.11			
38000	389	40.8	20.16	0.87	436	41.9	23.65	0.94	479	43.3	27.1	0.99	520	45.7	30.67	1.02	559	48.5	34.3	1.04	594	50.7	37.86	1.07	657	55.4	45	1.10			
39000	397	42.7	21.6	0.86	443	43.6	25.19	0.92	485	45.1	28.73	0.97	525	47	32.36	1.01	564	49.7	36.09	1.03	599	52.1	39.77	1.05	661	57	47.07	1.09			
40000	405	44.7	23.12	0.85	450	45.4	26.8	0.91	491	47	30.43	0.96	531	48.3	34.12	1.00	569	51	37.94	1.02	605	53.6	41.75	1.04	666	58.6	49.21	1.08			
41000	413	46.6	24.72	0.84	457	47.1	28.48	0.90	498	48.8	32.2	0.95	536	49.7	35.96	0.98	574	52.3	39.87	1.01	610	54.9	43.79	1.03	671	60.3	51.44	1.07			
42000	421	48.6	26.39	0.82	464	49	30.23	0.89	504	50.6	34.05	0.93	542	51.5	37.89	0.97	579	53.7	41.86	1.00	615	56.5	45.88	1.02	676	62	53.74	1.06			
43000	429	50.6	28.14	0.81	471	50.8	32.05	0.88	511	52.3	35.98	0.92	548	53.4	39.9	0.96	584	55.3	43.94	0.99	619	58.1	48.05	1.01	681	63.8	56.13	1.05			

Grey shaded areas meet or exceed the FEI standards for efficiency in California.

FEI calculated using default motor efficiency without the motor.  
For complete fan performance please use Delair or consult factory. [www.canarm.com/delair](http://www.canarm.com/delair)

Performance certified is for installation type B: free inlet, ducted outlet. Power rating (BHP) does not include transmission losses. Performance ratings do not include the effect of appurtenances (accessories).



### 933

Shaft size: 2-3/16"  
Shaft size: 2-7/16"

Max RPM: 750  
Max RPM: 750

Max HP: 40  
Max HP: 50

Shaft size: 2-11/16"

Max RPM: 750

Max HP: 100

CFM	1/2" SP				1" SP				1-1/2" SP				2" SP				2-1/2" SP				3" SP				4" SP						
	RPM	Sone	HP	FEI	RPM	Sone	HP	FEI	RPM	Sone	HP	FEI	RPM	Sone	HP	FEI	RPM	Sone	HP	FEI	RPM	Sone	HP	FEI	RPM	Sone	HP	FEI	RPM	Sone	HP
20000	223	14.2	3.77	1.36	290	17.2	5.8	1.30	345	25.4	7.79	1.28	402	31.3	10.24	1.21	471	41.1	13.93	1.07	537	56.7	18.14	0.95	642	87.2	26.21	0.85			
22000	232	16.6	4.6	1.27	294	18.3	6.73	1.26	349	24.4	8.98	1.24	398	32.6	11.24	1.23	452	36.6	14.21	1.16	515	47.4	18.31	1.05	629	79.1	27.39	0.90			
24000	241	19.4	5.56	1.19	299	19.8	7.8	1.22	354	24	10.32	1.20	400	31.8	12.68	1.21	444	38.9	15.24	1.19	496	42.1	18.65	1.13	611	69.2	28.12	0.96			
26000	251	22.5	6.66	1.12	306	21.9	9.04	1.17	358	25.1	11.68	1.18	405	30.6	14.34	1.18	446	38.4	16.94	1.18	487	45.1	19.77	1.17	589	57.9	28.26	1.04			
28000	261	25.3	7.91	1.06	314	24.4	10.45	1.12	363	26.6	13.18	1.15	410	30.6	16.14	1.14	450	37.2	18.9	1.16	488	44.8	21.74	1.16	571	54.5	28.84	1.11			
30000	270	27.3	9.27	1.01	323	27.1	12.04	1.08	368	28.5	14.87	1.11	413	31.7	17.96	1.12	455	35.8	21.09	1.13	491	43.7	24.02	1.14	562	57.5	30.42	1.14			
32000	280	29.4	10.78	0.97	332	30.2	13.82	1.03	376	30.8	16.77	1.08	418	33.2	19.95	1.10	459	36.8	23.33	1.11	496	42.1	26.56	1.12	563	57.3	33	1.13			
34000	290	31.7	12.46	0.93	341	33.7	15.79	0.99	384	33.6	18.87	1.04	423	35.2	22.13	1.08	463	38.2	25.65	1.09	501	42	29.28	1.09	566	56.1	35.97	1.12			
36000	300	34.2	14.34	0.89	351	37.6	17.96	0.95	392	36.8	21.19	1.01	430	37.6	24.57	1.05	468	39.9	28.16	1.07	505	43.4	31.95	1.08	570	54.6	39.24	1.10			
38000	311	37	16.44	0.86	361	41.8	20.33	0.92	401	40.3	23.75	0.98	438	40.4	27.25	1.02	473	41.9	30.91	1.05	509	45	34.82	1.06	576	52.9	42.77	1.08			
40000	323	39.9	18.76	0.83	371	44.9	22.89	0.89	410	44	26.54	0.95	446	43.6	30.17	0.99	480	44.6	33.95	1.02	514	46.9	37.92	1.04	580	54.2	46.37	1.06			
42000	334	43.2	21.32	0.80	380	47.7	25.6	0.86	420	48	29.57	0.92	455	47	33.33	0.96	488	47.6	37.24	1.00	520	49.3	41.29	1.02	584	55.8	50	1.05			
44000	346	46.5	24.12	0.77	390	50.7	28.53	0.84	430	52.4	32.84	0.89	464	50.8	36.78	0.94	496	50.9	40.81	0.97	527	52.2	44.97	1.00	588	57.8	53.86	1.03			
46000	358	50	27.17	0.75	400	53.7	31.69	0.82	439	57.4	36.36	0.86	473	55.1	40.5	0.91	504	54.6	44.65	0.95	534	55.4	48.94	0.98	593	60.1	57.98	1.02			
48000	371	53.8	30.5	0.73	410	56.9	35.1	0.80	449	61.9	40.12	0.84	482	60	44.5	0.89	513	58.9	48.77	0.93	542	59.3	53.2	0.96	599	62.9	62.41	1.00			

### 936

Shaft size: 2-3/16"  
Shaft size: 2-11/16"

Max RPM: 300  
Max RPM: 300

Max HP: 40  
Max HP: 100

CFM	1/2" SP				1" SP				1-1/2" SP				2" SP				2-1/2" SP				3" SP				4" SP						
	RPM	Sone	HP	FEI	RPM	Sone	HP	FEI	RPM	Sone	HP	FEI	RPM	Sone	HP	FEI	RPM	Sone	HP	FEI	RPM	Sone	HP	FEI	RPM	Sone	HP	FEI	RPM	Sone	HP
16000	193	10.8	2.33	1.61	273	18.8	4.23	1.35	363	36.2	7.36	1.05	424	47.9	10.36	0.94	475	58.5	13.48	0.87	520	68.8	16.74	0.82	598	88.1	23.69	0.74			
18000	198	12.1	2.82	1.54	266	14.6	4.67	1.40	348	31.5	7.6	1.16	420	46.2	11.16	0.99	474	57.8	14.53	0.91	521	69.1	18.02	0.86	600	89.9	25.37	0.78			
20000	203	13.4	3.39	1.47	268	15.7	5.45	1.36	332	25.1	7.85	1.26	409	41.5	11.66	1.06	470	56	15.53	0.95	519	68.1	19.27	0.89	601	90.6	27.07	0.82			
22000	210	15.2	4.07	1.39	272	18	6.32	1.32	326	21.6	8.56	1.28	391	35.8	11.84	1.16	461	51.9	16.28	1.01	515	65.8	20.47	0.93	601	90.1	28.76	0.85			
24000	217	17.3	4.86	1.32	276	20.4	7.24	1.29	328	22.7	9.7	1.26	379	29.1	12.4	1.22	442	44.1	16.45	1.10	506	61.4	21.39	0.98	598	88.3	30.41	0.88			
26000	225	19.5	5.77	1.25	281	21.8	8.26	1.25	332	24.9	11	1.22	377	28	13.61	1.22	428	36.6	16.95	1.16	487	52.7	21.58	1.06	593	85	31.98	0.91			
28000	232	22.1	6.82	1.18	287	23.3	9.41	1.21	335	27.4	12.32	1.20	379	29.2	15.18	1.20	421	32.8	18.07	1.19	471	44.2	22.08	1.13	582	78.5	32.96	0.96			
30000	241	24.2	8	1.12	293	25.2	10.72	1.17	340	29.1	13.75	1.17	383	31.3	16.92	1.17	422	33.4	19.9	1.17	462	38.2	23.17	1.16	563	69	33.21	1.03			
32000	249	26.2	9.32	1.07	300	27.5	12.17	1.13	345	30.6	15.31	1.15	387	33.7	18.66	1.15	425	35.1	21.95	1.15	461	38	25.17	1.16	547	59	33.84	1.09			
34000	257	28.2	10.75	1.02	307	30.2	13.79	1.09	350	32.1	17.02	1.12	391	35.7	20.53	1.13	429	37.4	24.13	1.13	464	39.3	27.52	1.14	536	49.6	35.11	1.13			
36000	266	30.4	12.33	0.98	315	33.2	15.58	1.05	357	34	18.93	1.09	396	37.2	22.55	1.11	433	40.1	26.34	1.11	468	41.5	30.1	1.12	532	47.7	37.38	1.13			
38000	275	32.9	14.09	0.94	323	36.5	17.57	1.02	364	36.5	21.02	1.06	401	38.8	24.74	1.09	437	42.3	28.68	1.10	471	44.1	32.7	1.10	534	48.5	40.35	1.12			
40000	285	35.5	16.03	0.91	330	40.1	19.75	0.98	371	39.4	23.31	1.04	407	40.7	27.12	1.07	442	44	31.19	1.08	475	47.3	35.39	1.09	537	50.3	43.61	1.10			
42000	295	38.3	18.17	0.88	339	42.9	22.11	0.95	378	42.6	25.79	1.01	413	43.3	29.73	1.04	447	45.8	33.88	1.06	480	49.4	38.25	1.07	541	53.2	47.12	1.09			
44000	306	41.3	20.54	0.85	347	45.4	24.66	0.92	386	45.8	28.5	0.98	420	46.2	32.54	1.02	453	48.3	36.79	1.05	485	51.5	41.28	1.06	545	56.5	50.56	1.07			
46000	316	44.6	23.14	0.82	355	47.8	27.4	0.89	393	49.2	31.45	0.95	427	49.4	35.58	1.00	459	51	39.95	1.03	490	53.8	44.53	1.04	548	61.1	54.15	1.06			
48000	327	47.9	25.96	0.79	364	50.3	30.29	0.87	401	52.8	34.62	0.93	435	52.7	38.86	0.97	466	54	43.34	1.01	496	56.4	48	1.03	553	64.1	57.91	1.05			
49000	333	49.7	27.47	0.78	368	51.6	31.81	0.86	405	54.7	36.3	0.92	438	54.6	40.58	0.96	469	55.6	45.13	1.00	499	57.8	49.84	1.02	555	65.2	59.87	1.04			

Grey shaded areas meet or exceed the FEI standards for efficiency in California.  
FEI calculated using default motor efficiency without the motor.  
For complete fan performance please use Delair or consult factory. [www.canarm.com/delair](http://www.canarm.com/delair)

Performance certified is for installation type B: free inlet, ducted outlet. Power rating (BHP) does not include transmission losses. Performance ratings do not include the effect of appurtenances (accessories).